

VW 3700





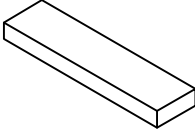
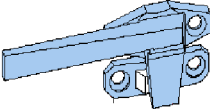

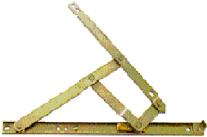
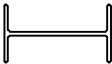
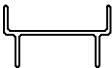

PROJECT-OUT VENT WINDOW



INSTALLATION INSTRUCTIONS

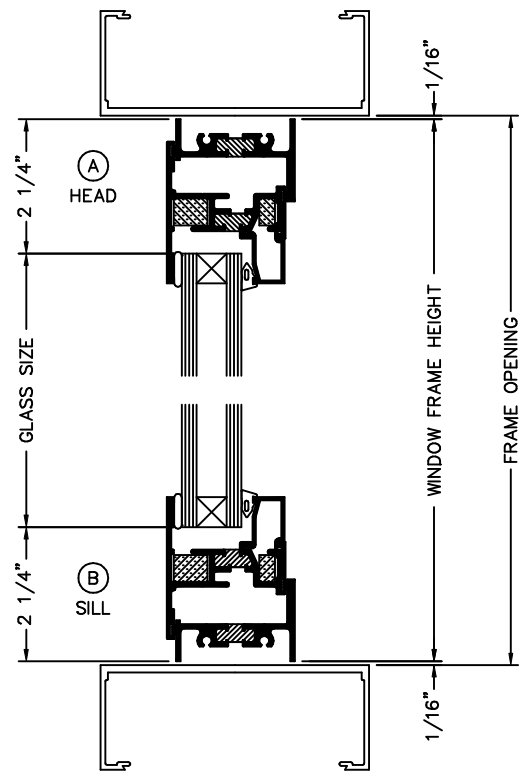
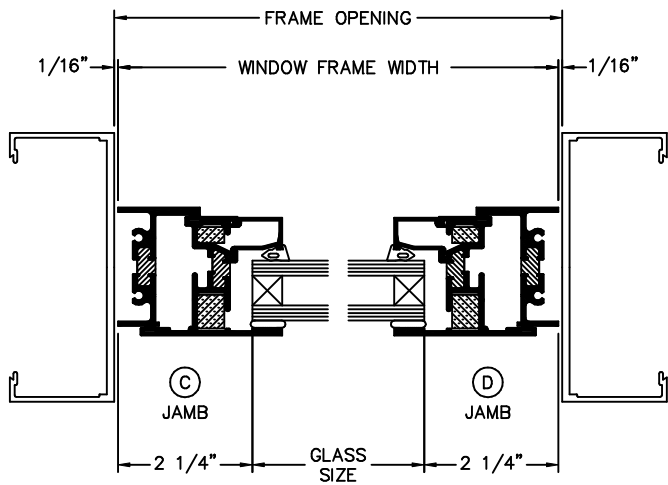
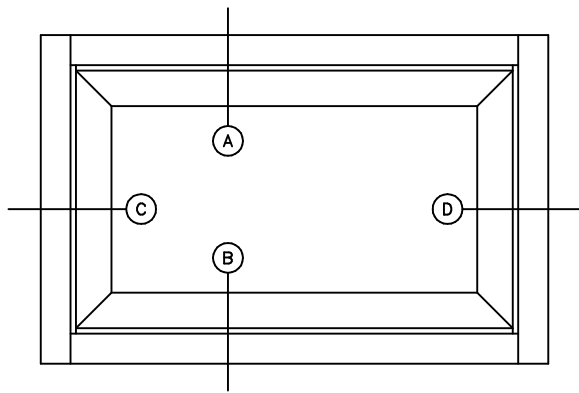
TUBELITE®
STOREFRONT, CURTAINWALL & ENTRANCES
DEPENDABLE

MATERIALS LIST & PARTS IDENTIFICATION

P1221		WIPER GASKET	N.B.T.		TREMCO POLYSHIM II WITH 1/8" SHIM OR EQUAL
P3702		BULB WEATHERING	N.B.T.		
P3703		GLAZING WEDGE	N.B.T.		3/8" x 1" x 4" SETTING BLOCK
P3709L/R		CAM HANDLES	N.B.T.		1/8" x 7/8" x 4" SILICONE SETTING BLOCK
P3713A - F		STAINLESS STL HD 4 BAR HINGE			
P3706		MULL ADAPTER			
P3707		FLUSH GLAZE ADAPTER			
P3708		CURTAINWALL ADAPTER			

TYPICAL DETAILS

GLASS SIZE = WINDOW FRAME DIM - 4 1/2"



TYPICAL INSTALLATION

WINDOW FRAME PREPARATION

- 1. DRILL CLEARANCE HOLES PER FIGURE 1.
- 2. MINIMUM ANCHOR SPACING:
 - A. 6" FROM EACH CORNER
 - B. 3" FROM LOCKING POINTS
 - C. 12" O.C.

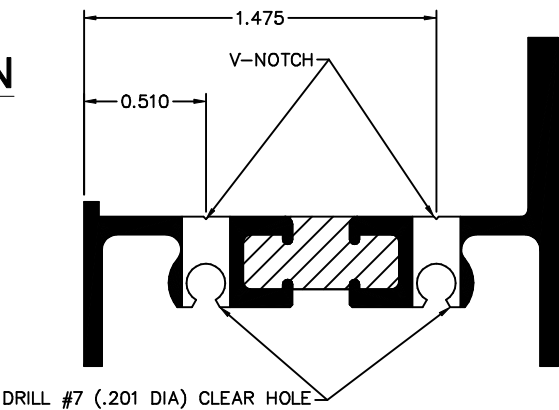


FIGURE 1

WINDOW INSTALLATION

- 1. MAKE SURE THAT OPENING IS SQUARE AND PLUMB.
- 2. POSITION WINDOW FRAME IN OPENING.
 - A. FOR TUBELITE FLUSH GLAZE FRAMING, REFER TO TABLE 1 AND FIGURE 2 & 3, FOR LOCATION.
 - B. FOR OTHER TYPES OF FRAMING, SEE TABLE 2 AND FIGURES 2 & 3 FOR LOCATION.
- 3. SHIM AS REQUIRED, KEEPING WINDOW FRAME SQUARE.

SYSTEM	INFILL	DIM 'A'
E4000	1/4"	7/32"
E4500	1/4"	15/32"
E14000	1"	27/32"
T14000	1"	27/32"

TABLE 1

INFILL	DIM 'A'
1/4"	DIM 'B' - 1 21/32"
1"	DIM 'B' - 29/32"

TABLE 2

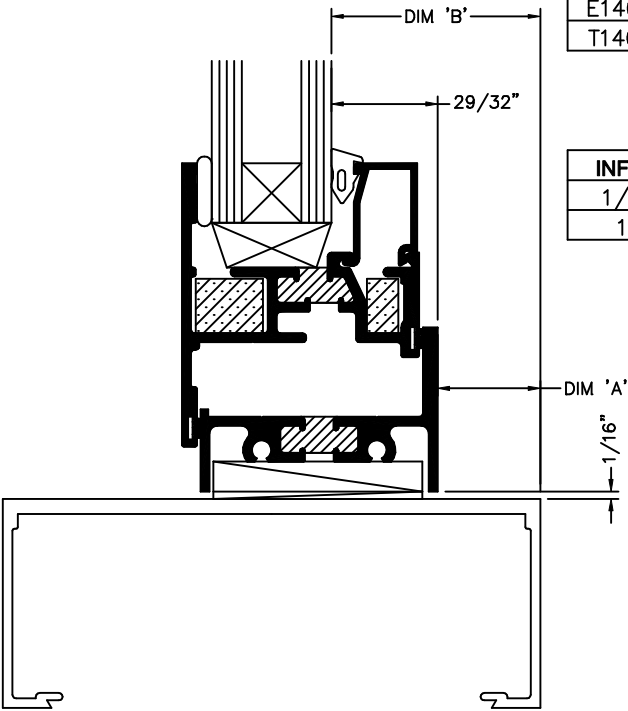


FIGURE 2

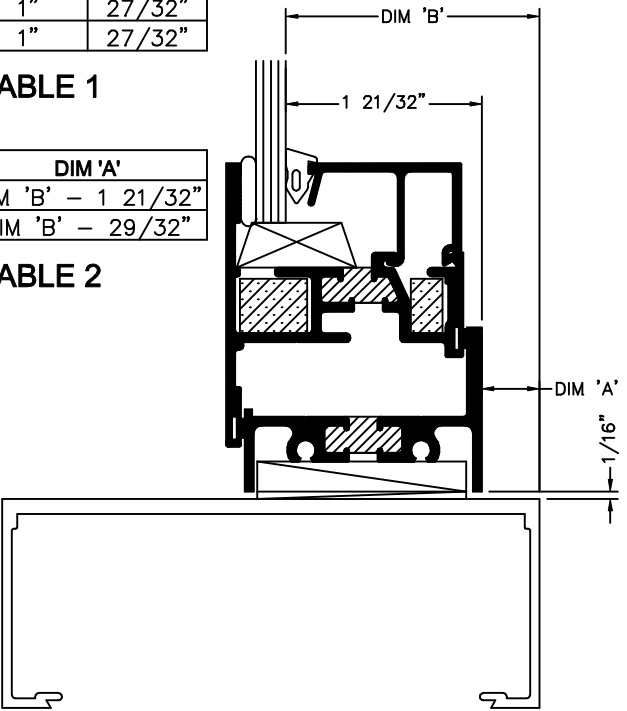


FIGURE 3

TYPICAL INSTALLATION

WINDOW INSTALLATION (CONT.)

4. MATCH DRILL ATTACHMENT HOLES IN ADJACENT FRAMING.
5. FASTEN WINDOW FRAME WITH #10 SELF TAPPING SCREWS.
6. FULLY SEAL ALL SCREW HEADS.
7. APPLY CONTINUOUS FILLET BEAD AT PERIMETER, USING SKINNING TYPE SEALANT.

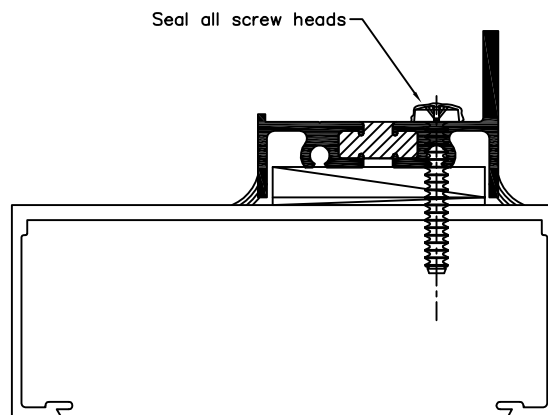


FIGURE 4

GLAZING PROCEDURE

1. APPLY TREMCO POLYSHIM II GLAZING TAPE CONTINUOUS TO SASH AS INDICATED IN FIGURES 5 AND 6. BACK UP JOINTS WITH 6" TO 8" LONG BEAD OF BUTYL SEALANT AT EACH CORNER. SEE NEXT PAGE FOR CORNER DETAIL.
2. INSTALL 3/8" x 1" SETTING BLOCKS AT 1/4 POINTS AS SHOWN IN FIGURES 5 AND 6.
3. SET GLASS ON SETTING BLOCKS, TIGHT AGAINST GLAZING TAPE.
4. INSTALL INTERIOR GLASS STOPS.
 - A. USE E3702 FOR 1" GLASS (SEE FIGURE 5).
 - B. USE E3703 FOR 1/4" GLAZING (SEE FIGURE 6).
5. INSTALL P3703 WEDGE GASKET.
 - A. CUT GASKET SLIGHTLY LONGER THAN DLO. ADD APPROXIMATELY 1/16" TO 1/8" PER FOOT.
 - B. START AT ENDS AND WORK TOWARDS CENTER OF GLASS LITE.
 - C. SEAL GASKET BUTT JOINTS AT CORNERS WITH BUTYL SEALANT.

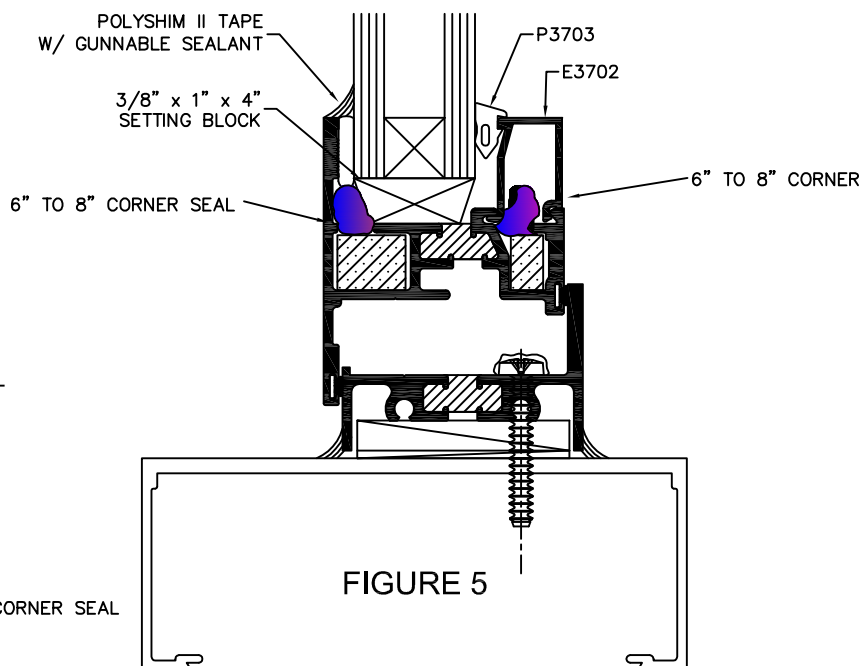


FIGURE 5

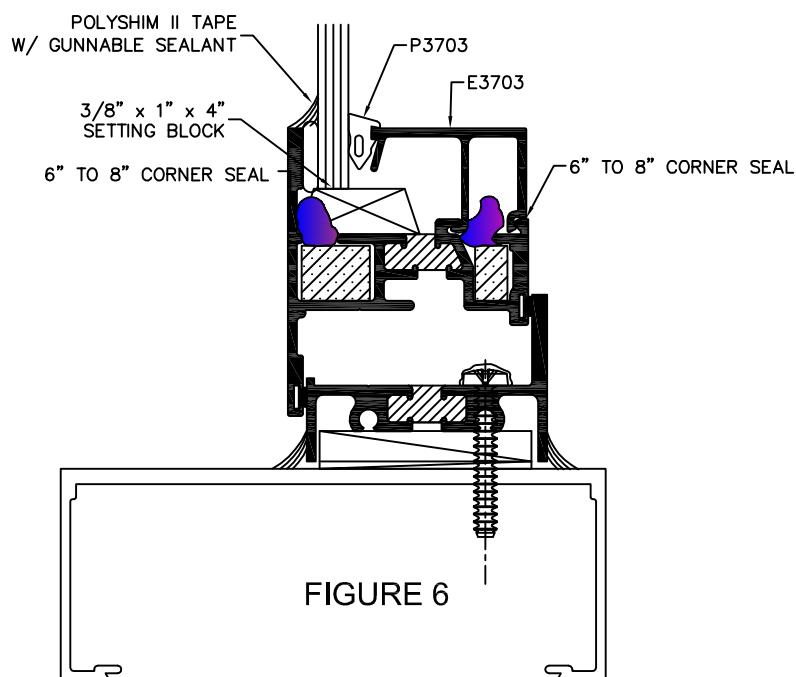


FIGURE 6

MINIMUM ANCHOR SPACING:
 A. 6" FROM EACH CORNER
 B. 3" FROM LOCKING POINTS
 C. 12" O.C.

GLAZING PROCEDURE CONTINUE:

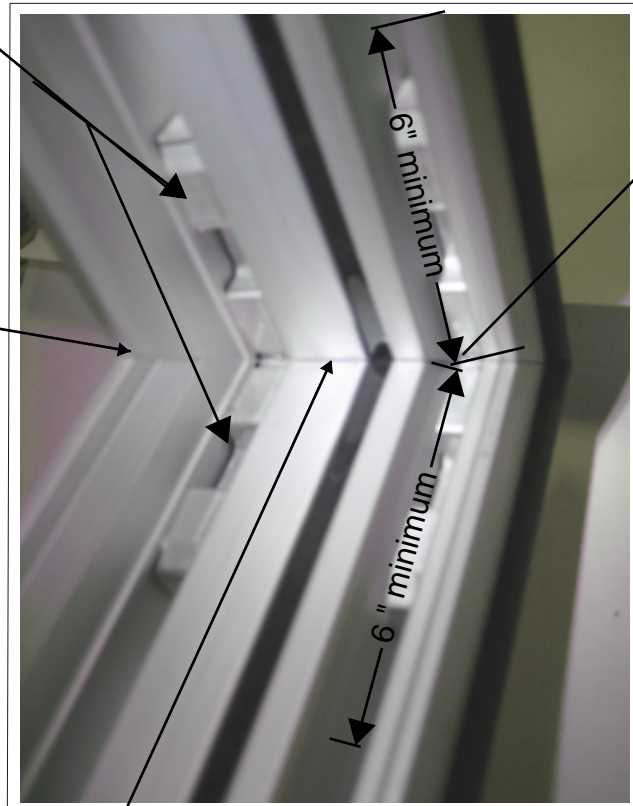
Sealing Corners -

- 1) Make sure the sealant completely fills the joint.
- 2) Using a non-scratching implement, tool the sealant immediate after running the bead. Exert positive pressure to ensure that the sealant makes complete contact with all surfaces.

6" to 8" bead of butyl sealant

Butyl sealant along all miter joints.

Butyl sealant along miter joint.



6" to 8" bead of butyl sealant

Corner Detail

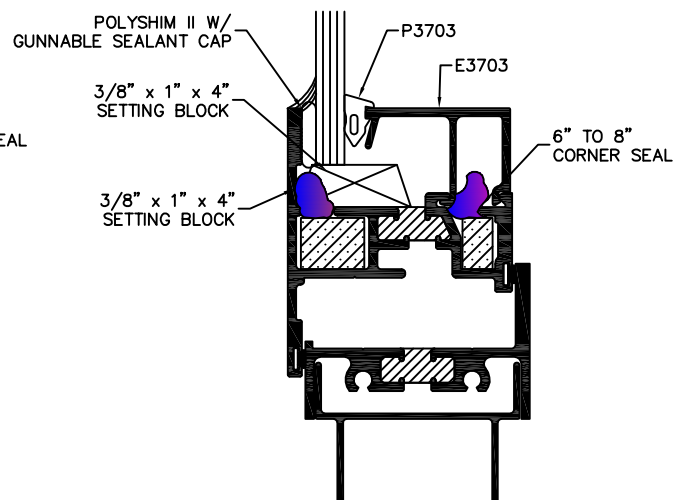
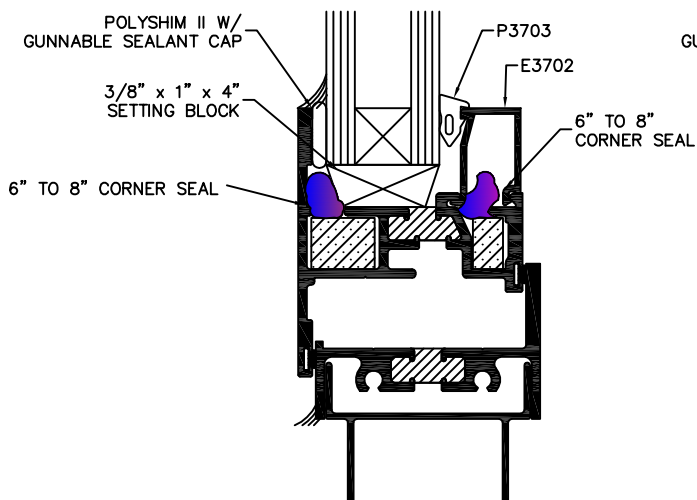
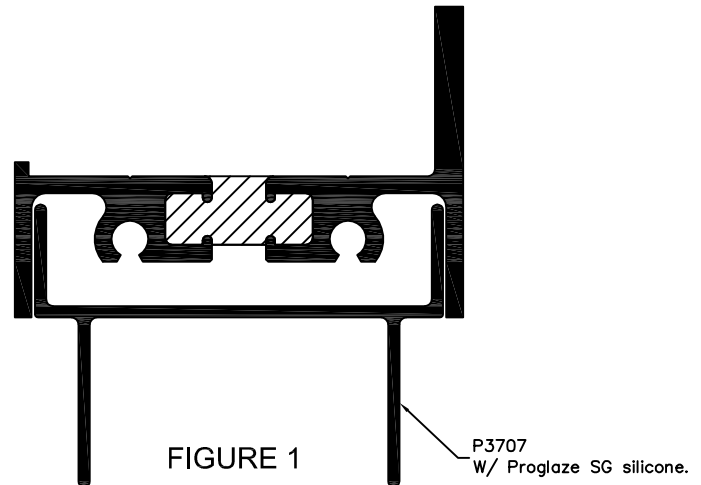
OPTIONAL T14000 INSTALLATION

WINDOW FRAME PREPARATION

1. APPLY ADAPTER P3707 TO HEAD AND SILL MEMBERS USING PROGLAZE SG SILICONE PER FIGURE 1.

GLAZING PROCEDURE

1. APPLY TREMCO POLYSHIM II BUTYL GLAZING TAPE CONTINUOUS TO SASH AS INDICATED IN FIGURES 2 AND 3. BACK UP JOINTS WITH 6" TO 8" LONG BEAD OF BUTYL SEALANT AT CORNERS. SEE NEXT PAGE CORNER DETAIL.
2. INSTALL 3/8" x 1" SETTING BLOCKS AT 1/4 POINTS AS SHOWN IN FIGURES 2 AND 3.
3. SET GLASS ON SETTING BLOCKS, TIGHT AGAINST GLAZING TAPE.
4. INSTALL INTERIOR GLASS STOPS.
 - A. USE E3702 FOR 1" GLASS (SEE FIGURE 2).
 - B. USE E3703 FOR 1/4" GLAZING (SEE FIGURE 3).
5. INSTALL P3703 WEDGE GASKET.
 - A. CUT GASKET SLIGHTLY LONGER THAN DLO. ADD APPROXIMATELY 1/16" TO 1/8" PER FOOT.
 - B. START AT ENDS AND WORK TOWARDS CENTER OF GLASS LITE.
 - C. SEAL GASKET BUTT JOINTS AT CORNERS WITH BUTYL SEALANT.



MINIMUM ANCHOR SPACING:
 A. 6" FROM EACH CORNER
 B. 3" FROM LOCKING POINTS
 C. 12" O.C.

GLAZING PROCEDURE CONTINUE:

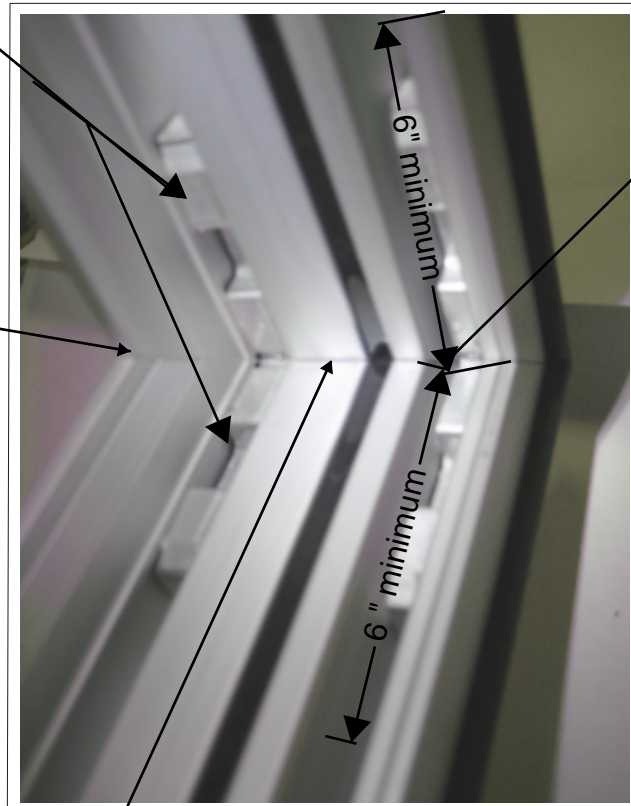
Sealing Corners -

- 1) Make sure the sealant completely fills the joint.
- 2) Using a non-scratching implement, tool the sealant immediate after running the bead. Exert positive pressure to ensure that the sealant makes complete contact will all surfaces.

6" to 8" bead of butyl sealant

Butyl sealant along all miter joints.

Butyl sealant along miter joint.



6" to 8" bead of butyl sealant

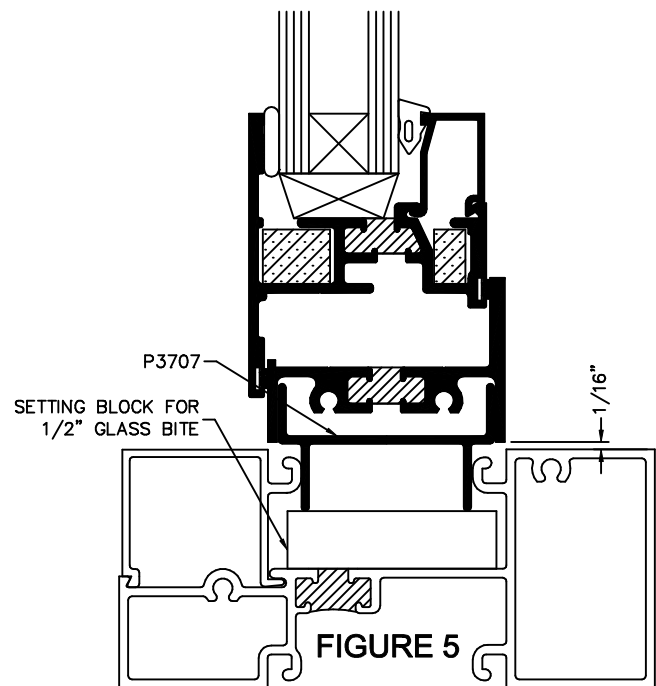
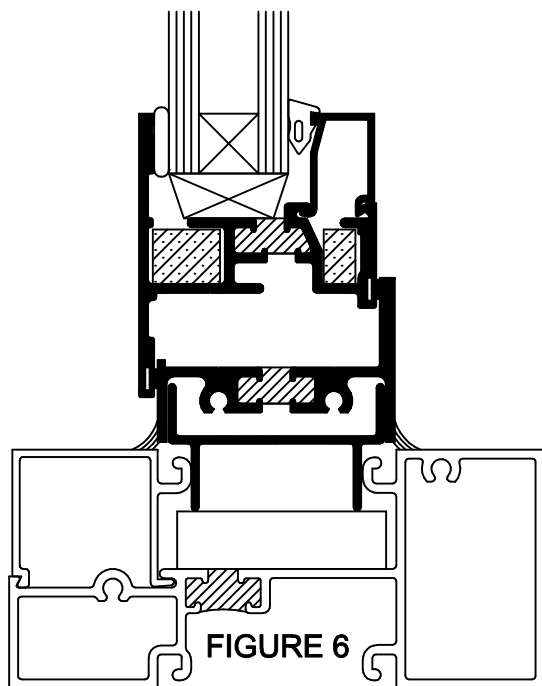
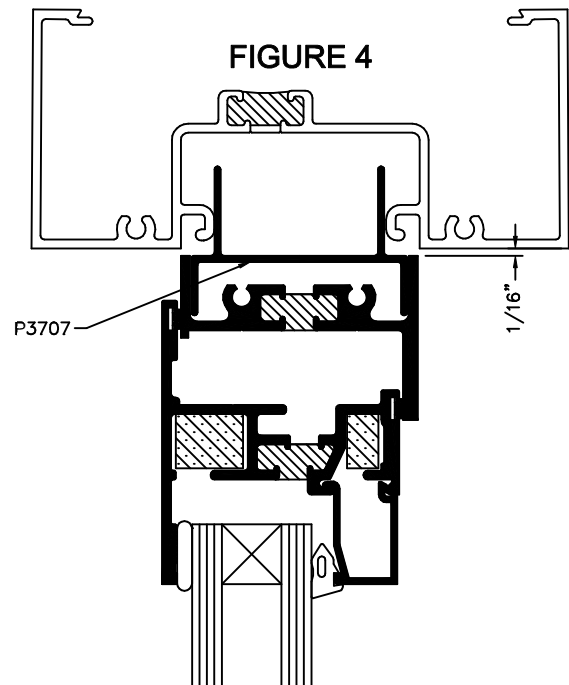
Corner Detail

OPTIONAL T14000 INSTALLATION

WINDOW INSTALLATION

1. MAKE SURE THAT OPENING IS SQUARE AND PLUMB.
2. POSITION WINDOW FRAME IN OPENING.
 - A. SLIDE P3707 @ HEAD INTO GLAZING POCKET OF T14000 FRAMING ABOVE. (SEE FIGURE 4).
 - B. SWING BOTTOM OF WINDOW INTO PLACE AND SET ON SETTING BLOCK (SEE FIGURE 5).
3. SNAP GLASS STOP INTO PLACE.
4. APPLY CONTINUOUS FILLET BEAD AT PERIMETER, USING SKINNING TYPE SEALANT (SEE FIGURE 6).

MINIMUM ANCHOR SPACING:
A. 6" FROM EACH CORNER
B. 3" FROM LOCKING POINTS
C. 12" O.C.



OPTIONAL CURTAINWALL INSTALLATION

WINDOW FRAME PREPARATION

1. APPLY ADAPTER P3708 TO HEAD, SILL AND JAMBS USING PROGLAZE SG SILICONE PER FIGURE 1.

GLAZING PROCEDURE

1. APPLY TREMCO POLYSHIM II BUTYL GLAZING TAPE CONTINUOUS TO SASH AS INDICATED IN FIGURES 2 AND 3.
BACK UP JOINTS WITH 6" TO 8" LONG BEAD OF BUTYL SEALANT AT CORNERS. SEE NEXT PAGE CORNER DETAIL.
2. INSTALL 3/8" x 1" SETTING BLOCKS AT 1/4 POINTS AS SHOWN IN FIGURES 2 AND 3.
3. SET GLASS ON SETTING BLOCKS, TIGHT AGAINST GLAZING TAPE.
4. INSTALL INTERIOR GLASS STOPS.
A. USE E3702 FOR 1" GLASS (SEE FIGURE 2).
B. USE E3703 FOR 1/4" GLAZING (SEE FIGURE 3).
5. INSTALL P3703 WEDGE GASKET.
A. CUT GASKET SLIGHTLY LONGER THAN DLO.
ADD APPROXIMATELY 1/16" TO 1/8" PER FOOT.
B. START AT ENDS AND WORK TOWARDS CENTER OF GLASS LITE.
C. SEAL GASKET BUTT JOINTS AT CORNERS WITH BUTYL SEALANT.

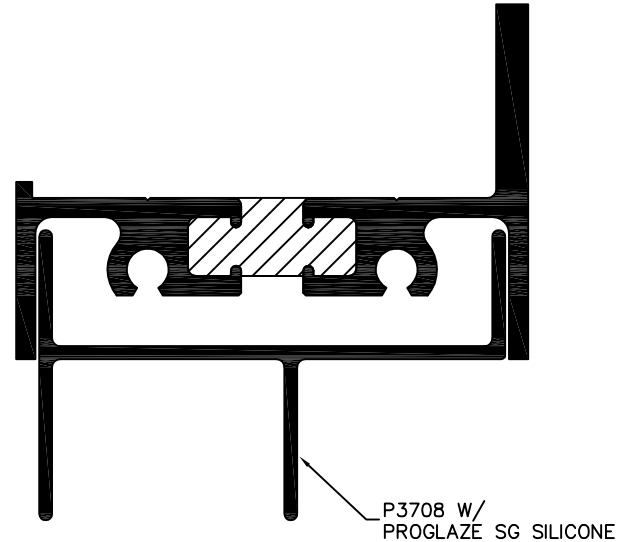


FIGURE 1

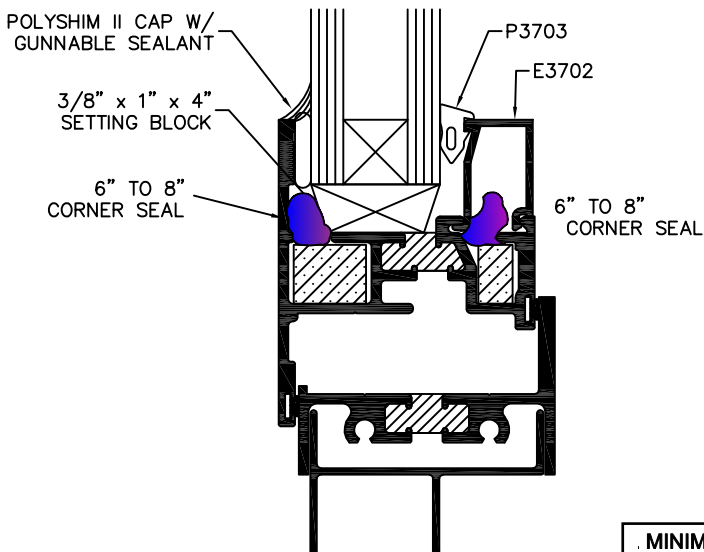


FIGURE 2

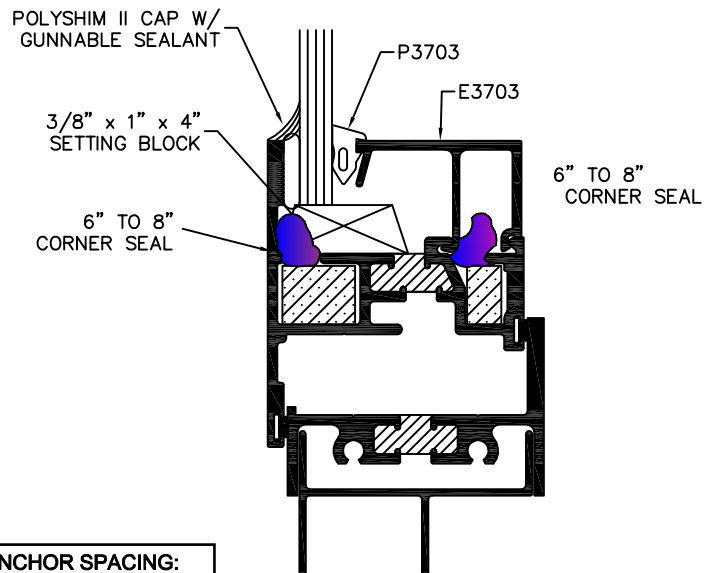


FIGURE 3

MINIMUM ANCHOR SPACING:
A. 6" FROM EACH CORNER
B. 3" FROM LOCKING POINTS
C. 12" O.C.

GLAZING PROCEDURE CONTINUE:

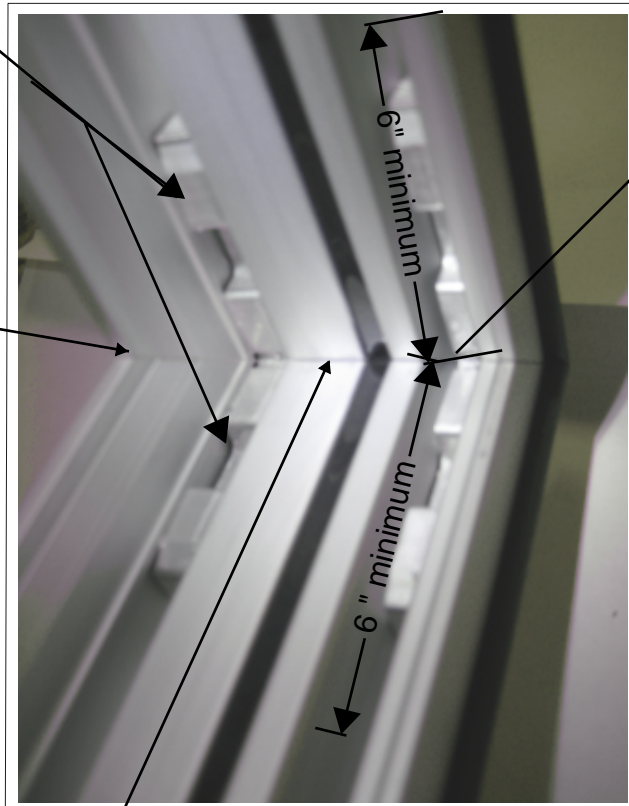
Sealing Corners -

- 1) Make sure the sealant completely fills the joint.
- 2) Using a non-scratching implement, tool the sealant immediately after running the bead. Exert positive pressure to ensure that the sealant makes complete contact with all surfaces.

6" to 8" bead of
butyl sealant

Butyl sealant along
all miter joints.

Butyl sealant along
miter joint.



6" to 8" bead of
butyl sealant

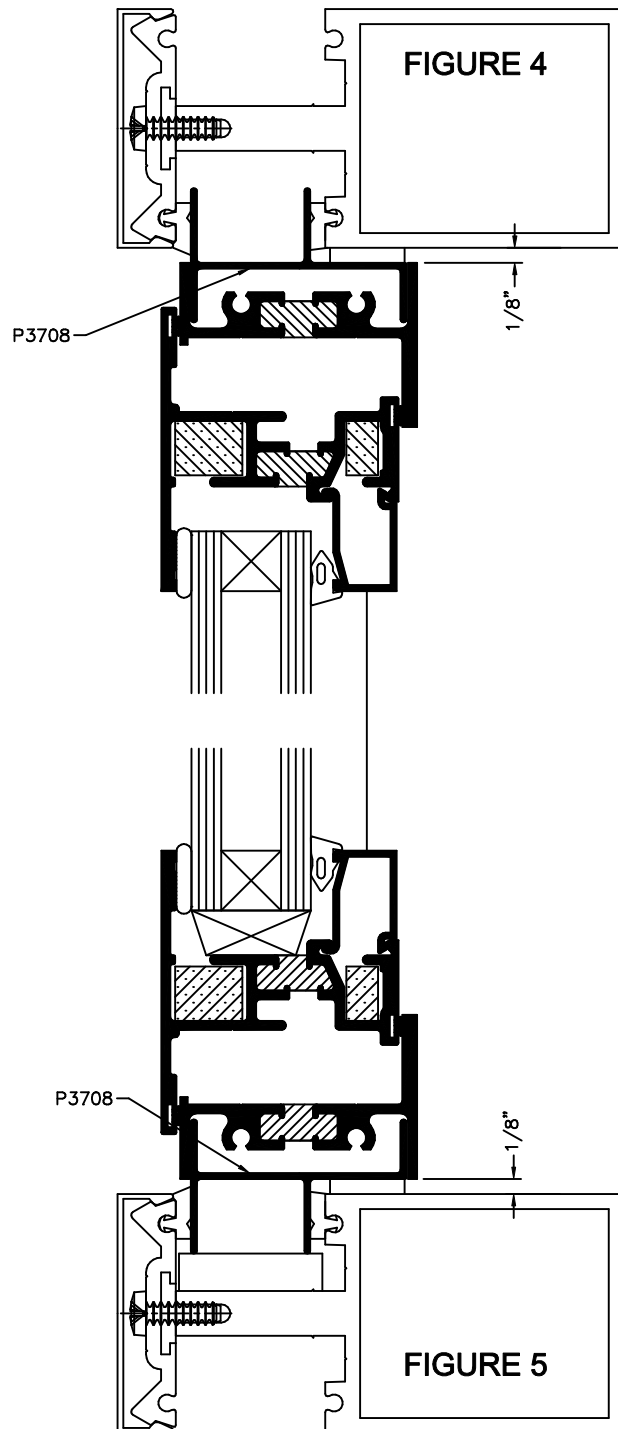
Corner Detail

OPTIONAL CURTAINWALL INSTALLATION

WINDOW INSTALLATION

1. MAKE SURE THAT OPENING IS SQUARE AND PLUMB.
2. POSITION WINDOW FRAME IN OPENING.
 - A. FOLLOWING CURTAINWALL MANUFACTURER'S INSTALLATION INSTRUCTIONS, INSTALL ASSEMBLED VENT IN PLACE OF GLASS.
 - B. USE SETTING BLOCK DESIGNED FOR 1/2" GLASS BITE. SHIM AS REQUIRED.
4. INSTALL PRESSURE PLATE AND SNAP COVER, PER MANUFACTURER'S RECOMMENDATION.

MINIMUM ANCHOR SPACING:
A. 6" FROM EACH CORNER
B. 3" FROM LOCKING POINTS
C. 12" O.C.



TUBELITE[®]

STOREFRONT, CURTAINWALL & ENTRANCES

DEPENDABLE

3056 WALKER RIDGE DRIVE NW, SUITE G
WALKER, MI 49544
800/866-2227 P 877/299-2414 F
WWW.TUBELITEINC.COM

May, 2013