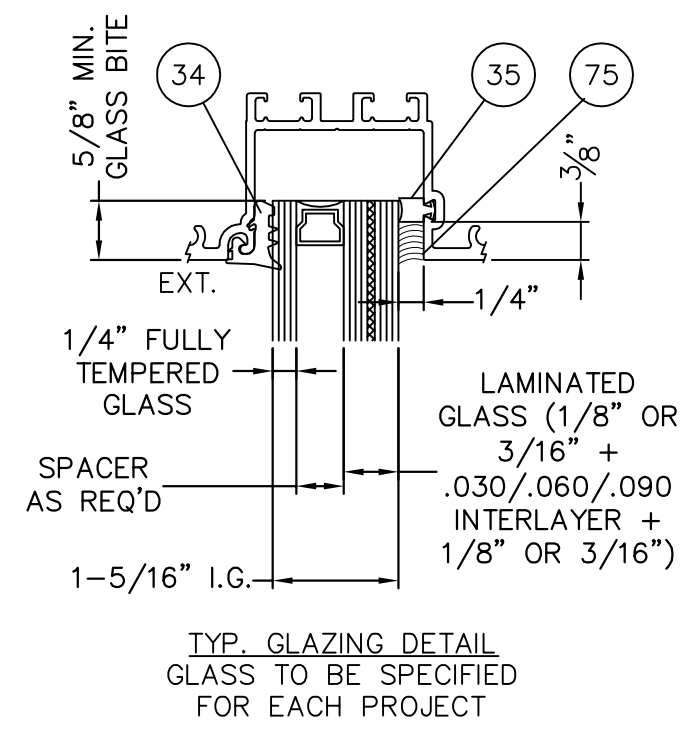
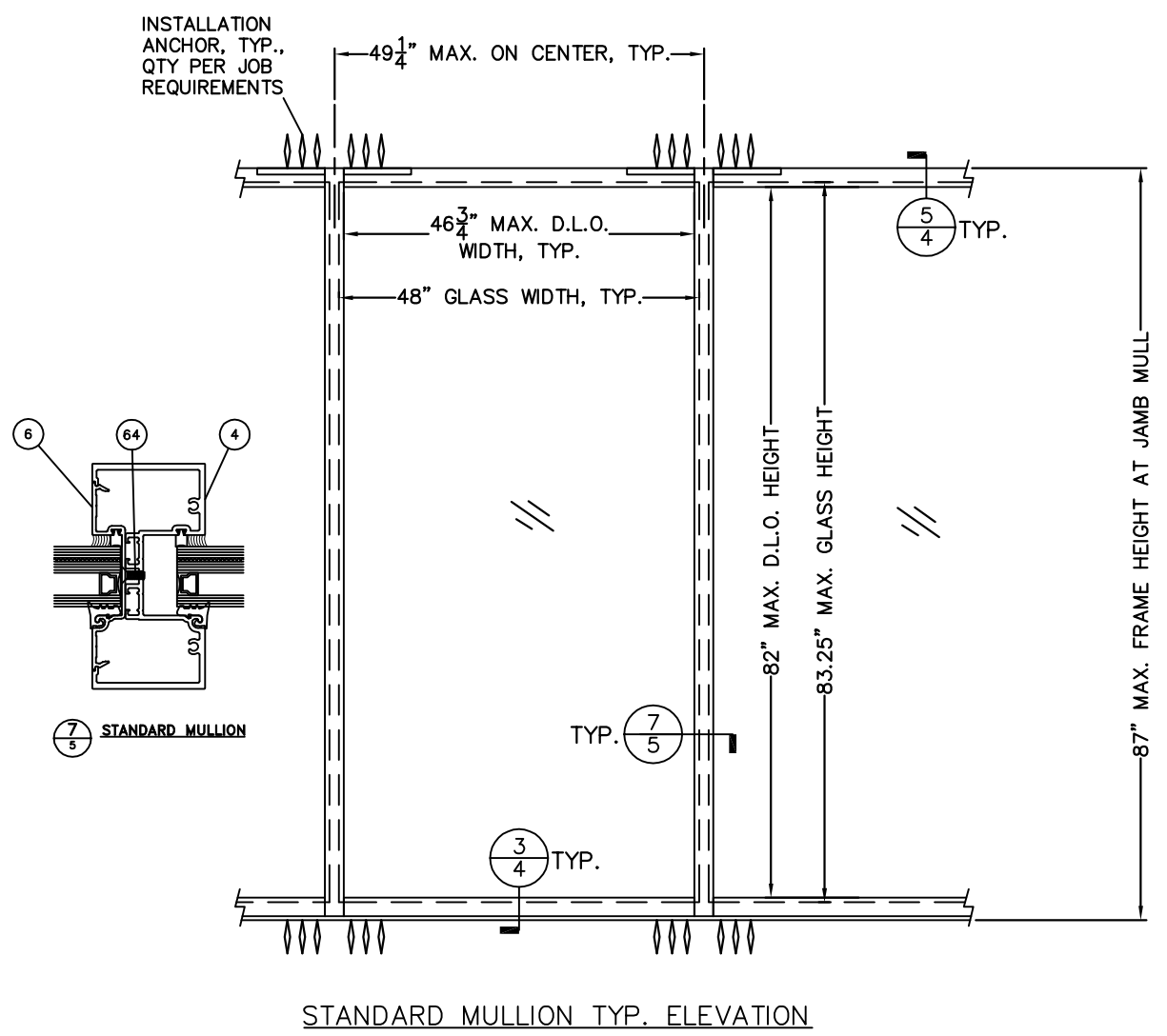


REVISION HISTORY:	
REV	DESCRIPTION
0	ORIGINAL RELEASE

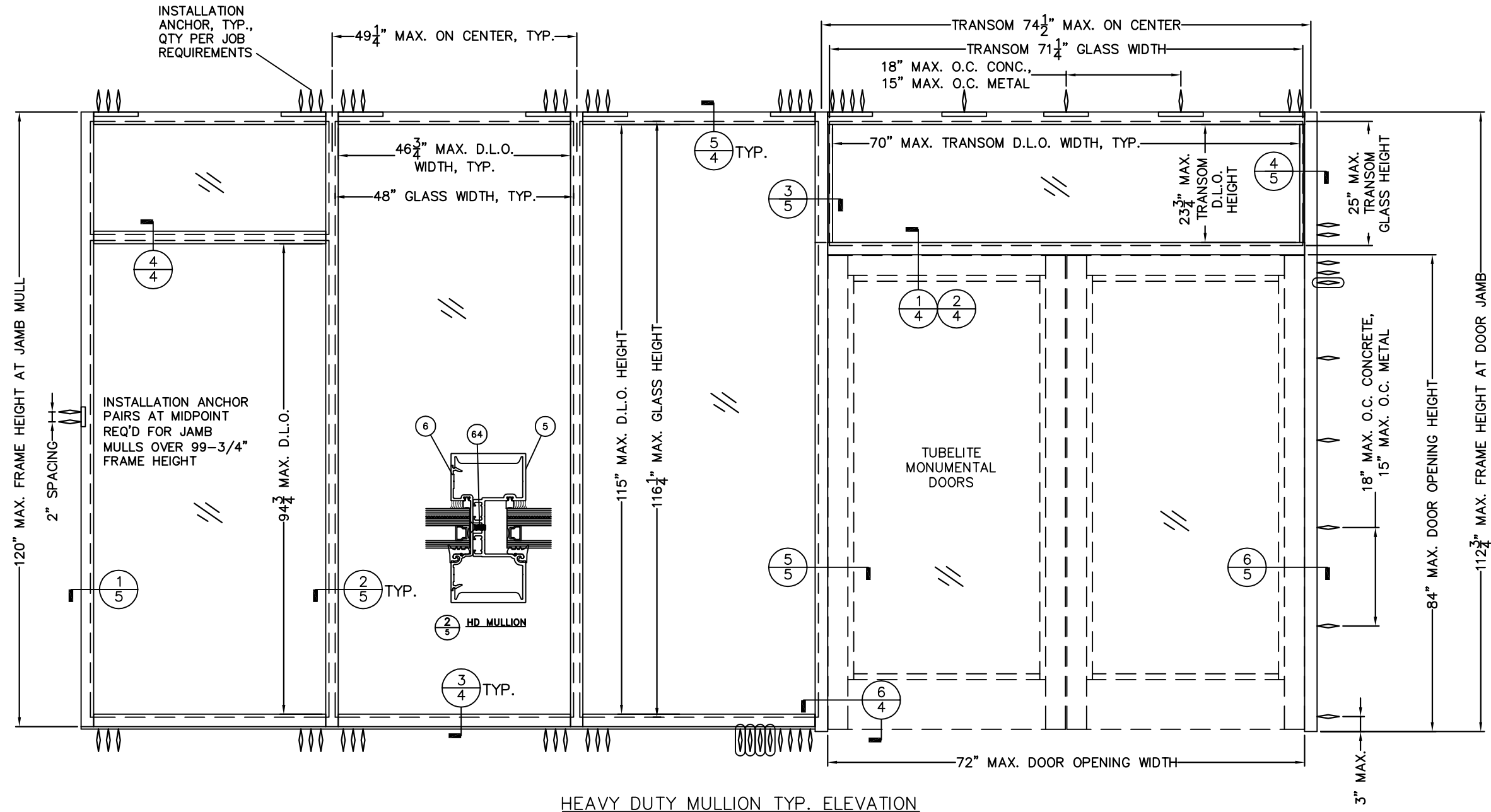
DATE:	05.13.15
DRAWING NUMBER:	E/T34000-BLAST
DRAWN:	
FINAL REVIEW:	
SCALE:	N.T.S.
REVISION:	0
SHEET NAME:	GEN. NOTES, GLAZING DETAILS, ELEVATIONS
SHEET:	1 OF 7

GENERAL NOTES:

- 1) THIS PRODUCT HAS BEEN ANALYZED IN ACCORDANCE WITH UFC 4-010-01 OCT. 2013 AND ASTM F2248 BLAST RESISTANCE CRITERIA USING CALCULATION AND SBEDS SOFTWARE, AND HAS BEEN FOUND TO COMPLY WITH 148' STANDOFF CHARGE WEIGHT I, AND 82' STANDOFF CHARGE WEIGHT II, IN THE CONFIGURATIONS SHOWN HEREIN. THIS DOCUMENT IS INFORMATIONAL AND NOT INTENDED FOR COMPLIANCE SUBMITTAL. EACH PROJECT MUST BE ANALYZED SEPARATELY FOR COMPLIANCE BASED ON PROJECT-SPECIFIC CHARGES, STANDOFFS, PRODUCT SIZES, AND SUBSTRATES, WITH SHOP DRAWINGS PREPARED FOR EACH PROJECT.
- 2) FRAMING MAY BE THERMALLY BROKEN OR NON-BROKEN
- 3) MAX. HEIGHT OF 10' IS FOR HEAVY DUTY MULLIONS. MAX. MULLION HEIGHT FOR STANDARD MULL IS 7' 3"
- 4) ANCHOR QUANTITIES SHOWN IN ELEVATIONS ARE FOR REFERENCE ONLY, ACTUAL ANCHORAGE TO BE DETERMINED ACCORDING TO PROJECT SPECIFIC REQUIREMENTS
- 5) WET-GLAZE ONLY, DRY-GLAZED NOT QUALIFIED FOR BLAST. 9/16 LAMIANATED GLASS STACK MAY NOT BE ACCEPTABLE FOR ALL PROJECTS OR MAY REQUIRE ALTERNATE GASKET OR CAULK FILLET FOR COMPLIANCE
- 6) DOORS MUST BE TUBELITE MONUMENTAL IN 6070 MAX. SIZE.
- 7) OHCC TOP RAIL WITH SCREW-APPLIED STOPS (DET. 1/4) IS REQUIRED WITH TRANSOM. STANDARD DOOR HEADER W/O TRANSOM AS IN DET. 2/4 (WITH SCREW-APPLIED STOPS) IS ALLOWABLE WITH ADDITIONAL INSTALL ANCHORS THROUGH HEAD.
- 8) TYP. HORIZONTAL CONNECTIONS ARE AS SHOWN HEREIN; PROJECT SPECIFIC CALCULATIONS MAY REQUIRE ALTERNATE FASTENING.



7/28/2015
 LUCAS A. TURNER, P.E.
 FL PE # 58201
 TURNER ENGINEERING &
 CONSULTING, INC.
 (COA # 29779)
 1239 JABARA AVE.
 NORTH PORT, FL 34288
 PH. 941-380-1574



HEAVY DUTY MULLION TYP. ELEVATION

TUBELITE
 SERIES E/T34000
 STOREFRONT SYSTEM
 BLAST RESISTANT

TUBELITE
 DEPENDABLE
 LEADERS IN ECO-EFFICIENT STOREFRONT,
 CURTAINWALL AND ENTRANCE SYSTEMS

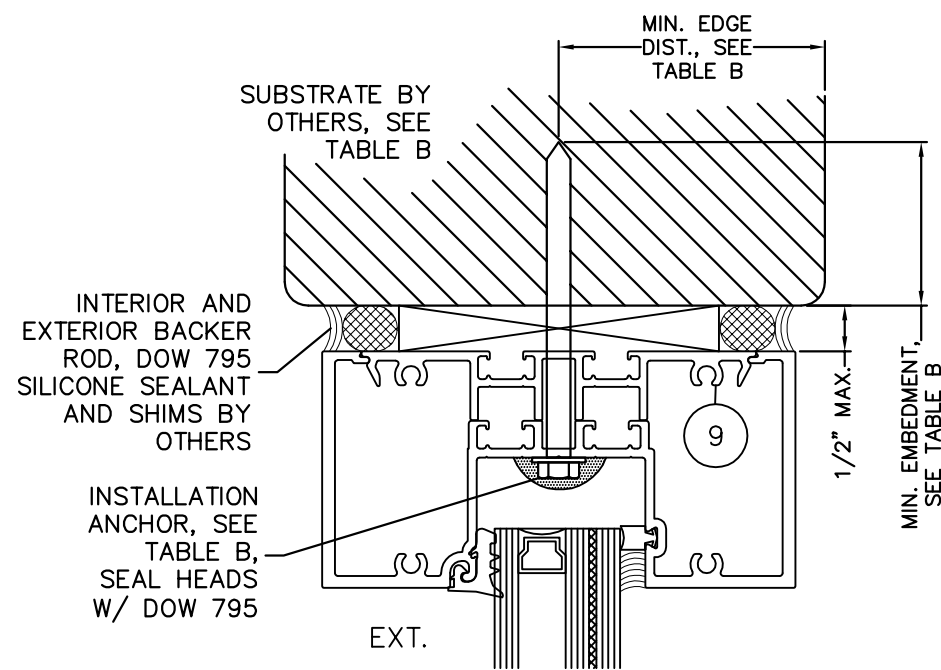
3056 WALKER RIDGE DRIVE N.W.
 WALKER, MICHIGAN 49544
 PH: 800.566.2227
 FX: 616.301.0095
 WEB SITE: WWW.TUBELITEINC.COM

REVISION HISTORY:

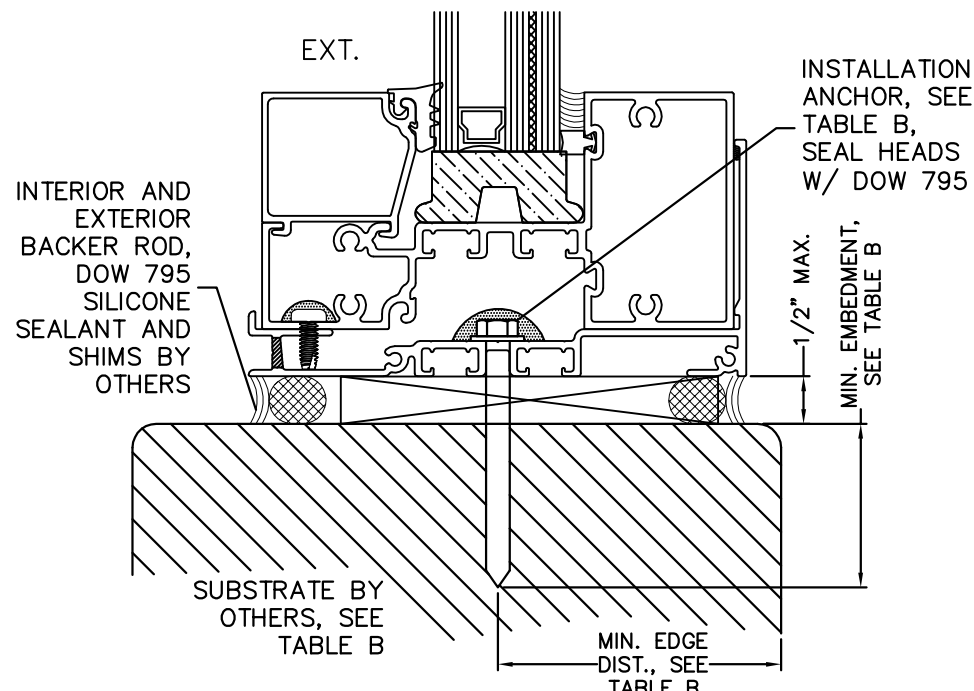
REV	DATE	DESCRIPTION
0	5.13.15	ORIGINAL RELEASE

DATE:	05.13.15
DRAWING NUMBER:	E/T34000-BLAST
DRAWN:	
FINAL REVIEW:	
SCALE:	N.T.S.
REVISION:	0
SHEET NAME:	TABLE ELEVATION
SHEET:	2 OF 7

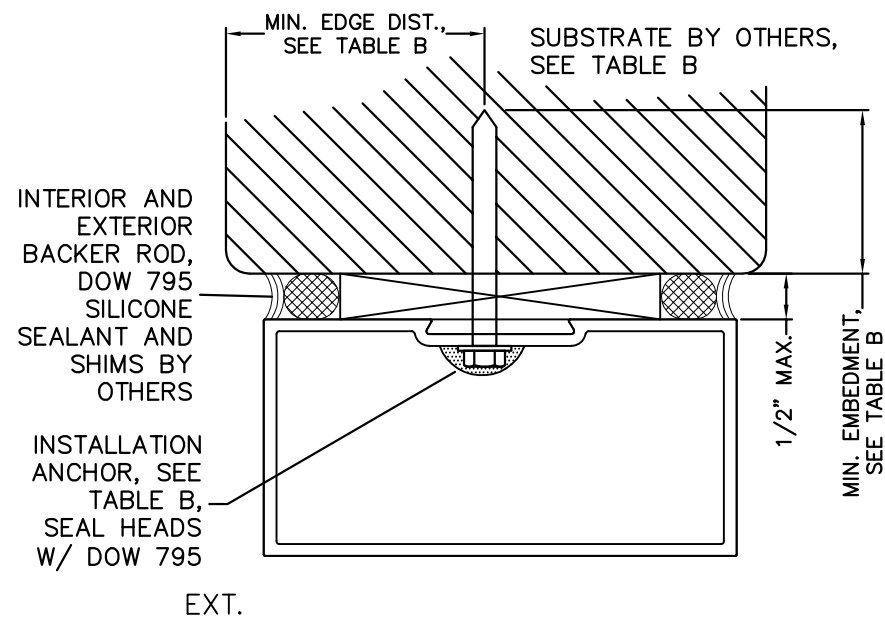
7/28/2015
 LUCAS A. TURNER, P.E.
 FL PE # 58201
 TURNER ENGINEERING &
 CONSULTING, INC.
 (COA # 29779)
 1239 JABARA AVE.
 NORTH PORT, FL 34288
 PH. 941-380-1574



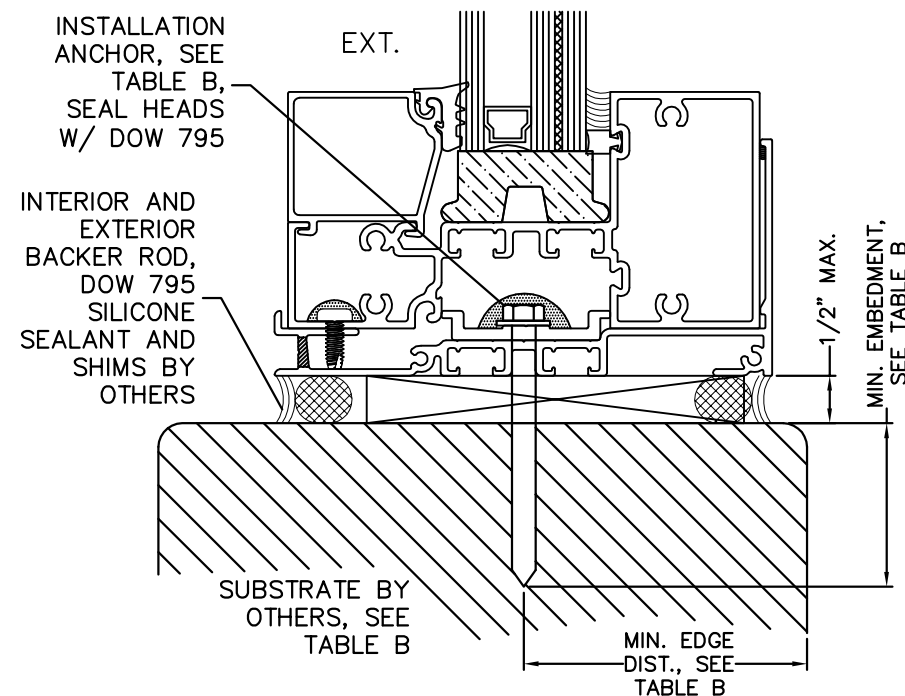
TYPICAL HEAD/JAMB ANCHORAGE



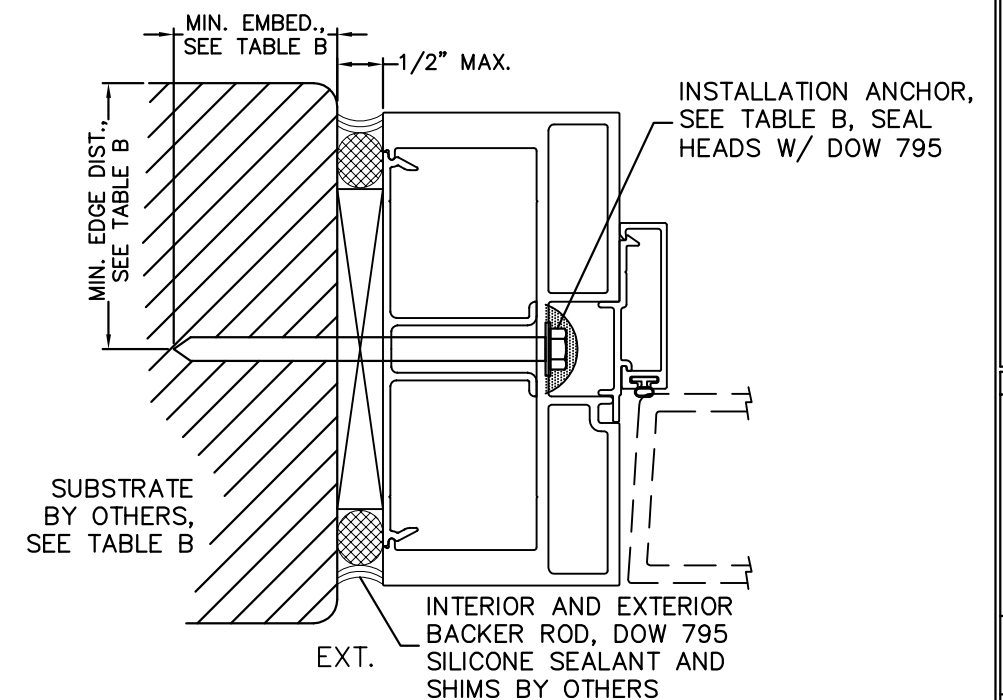
TYPICAL SILL ANCHORAGE



TYPICAL DOOR HEAD ANCHORAGE



TYPICAL SILL ANCHORAGE AT DOOR MULL



TYPICAL DOOR JAMB ANCHORAGE

TABLE B. QUALIFIED INSTALLATION ANCHOR INFORMATION

ID	SUBSTRATE	ANCHOR	MIN. EMBEDMENT	MIN. EDGE DISTANCE
A	SOLID UNCRACKED CONCRETE (3000 PSI MIN)	3/8" HILTI KWIK BOLT 3 CARBON OR STAINLESS STEEL	1 5/8"	2 1/2"
B	SOLID UNCRACKED CONCRETE (4000 PSI MIN)	3/8" POWERS WEDGE BOLT CARBON STEEL	2"	4 1/2"
C	SOUTHERN PINE WOOD (G=0.55 MIN)	3/8" GRADE 5 LAG SCREW	3"	2"
D	1/4" ALUM. 6063-T5 MIN. OR 1/4" STEEL 36 KSI MIN.	5/16-24 ELCO DRIL-FLEX OR HILTI KWIK-FLEX	SEE NOTE 5	3/4"

NOTE: INSTALL ONE FASTENER AT EACH LOCATION INDICATED BY ↓ SYMBOL IN ELEVATIONS.

ANCHORAGE NOTES:

1. SHIMS SHALL BE LOAD-BEARING (PLASTIC OR METALLIC) AND CAPABLE OF TRANSFERRING APPLIED LOADS FROM THE PRODUCTS TO THE OPENING SUBSTRATES.
2. SHIM EACH ANCHOR LOCATION WHERE GAP GREATER THAN 1/16" EXISTS BETWEEN PRODUCT FRAME AND OPENING SUBSTRATE.
3. SPECIFIED EMBEDMENT TO BASE MATERIAL SHALL BE BEYOND WALL FINISH OR STUCCO.
4. MINIMUM ANCHOR SPACING SHALL BE 2"
5. ANCHORS THROUGH METAL SHALL BE OF SUFFICIENT LENGTH TO PROVIDE THREAD ENGAGEMENT THROUGH THE FULL METAL WALL THICKNESS

7/28/2015
 LUCAS A. TURNER, P.E.
 FL PE # 58201
 TURNER ENGINEERING &
 CONSULTING, INC.
 (COA # 29779)
 1239 JABARA AVE.
 NORTH PORT, FL 34288
 PH. 941-380-1574

TUBELITE
 SERIES E/T34000
 STOREFRONT SYSTEM
 BLAST RESISTANT

3056 WALKER RIDGE DRIVE N.W.
 WALKER, MICHIGAN 49544
 PH: 800.566.2227
 FX: 616.301.0095
 WEB SITE: WWW.TUBELITEINC.COM

TUBELITE
 DEPENDABLE
 LEADERS IN ECO-EFFICIENT STOREFRONT,
 CURTAINWALL AND ENTRANCE SYSTEMS

REVISION HISTORY:

REV	DATE	DESCRIPTION
0	5.13.15	ORIGINAL RELEASE

DATE: 05.13.15

DRAWING NUMBER:

E/T34000-BLAST

DRAWN:

FINAL REVIEW:

SCALE: N.T.S.

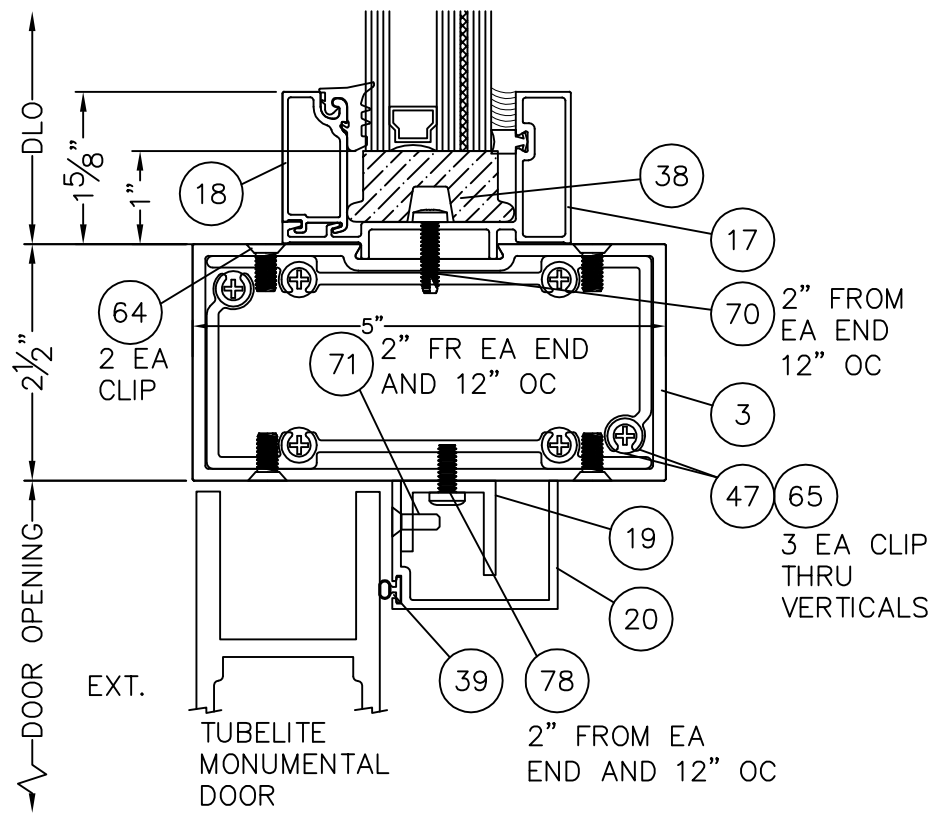
REVISION: 0

SHEET NAME:

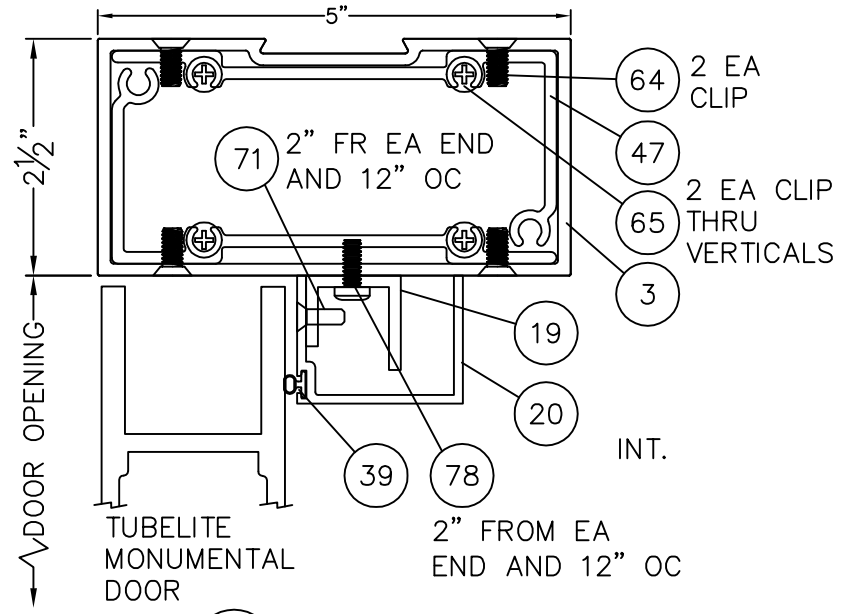
INSTALLATION

DETAILS, TABLE

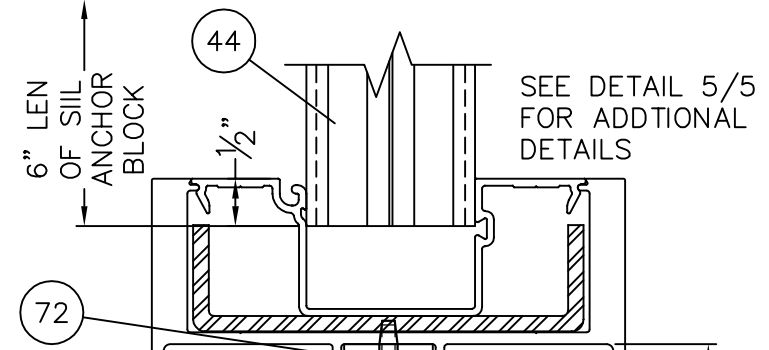
SHEET: 3 OF 7



1 DOOR TOP RAIL WITH TRANSOM
4

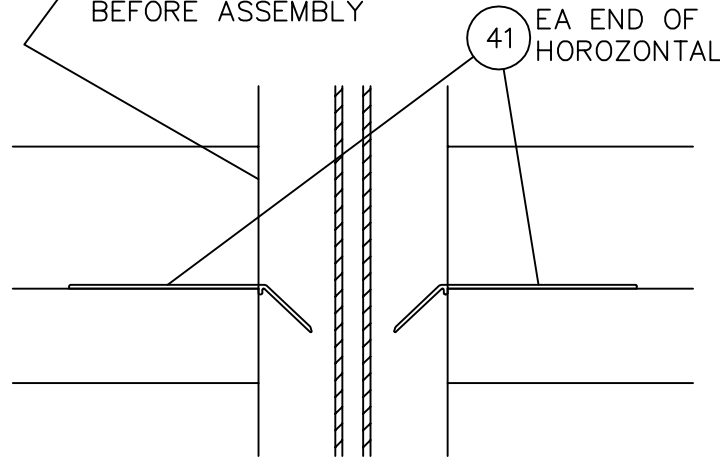


2 DOOR TOP RAIL NO TRANSOM
4

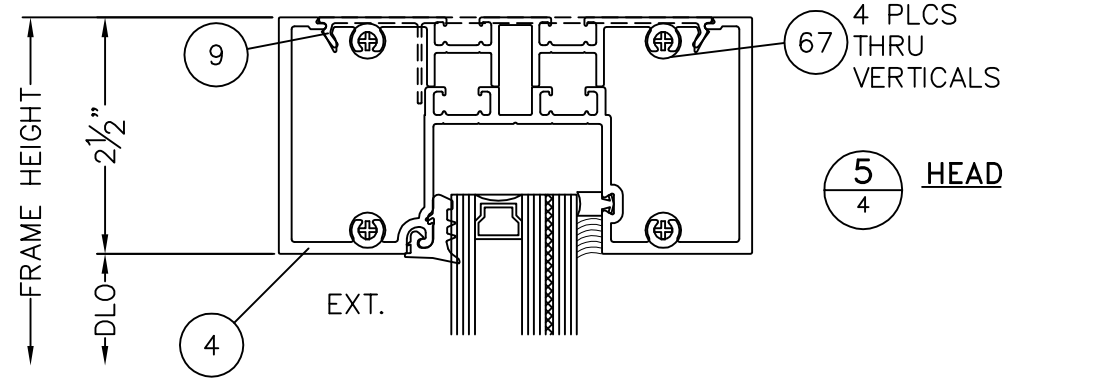


6 DOOR ANCHOR CLIP LOCATE EACH END OF THRESHOLD
4

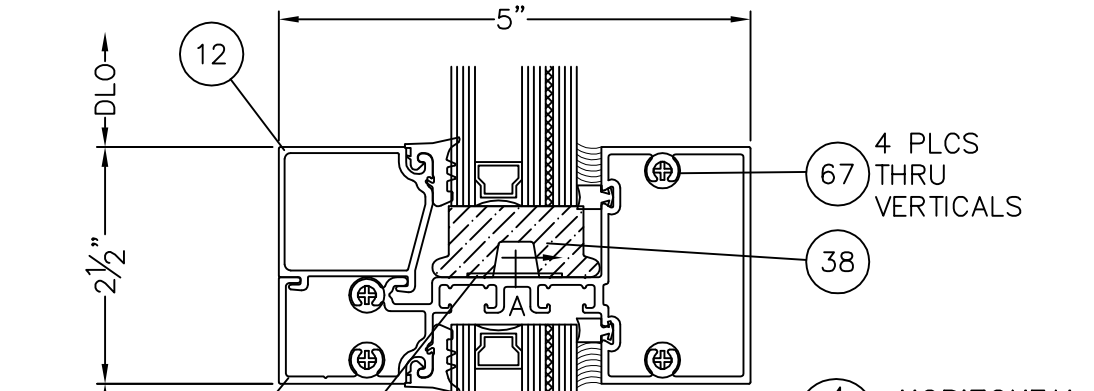
NOTE: APPLY DOW 795 TO ENDS OF HORIZONTAL EXTRUSIONS BEFORE ASSEMBLY



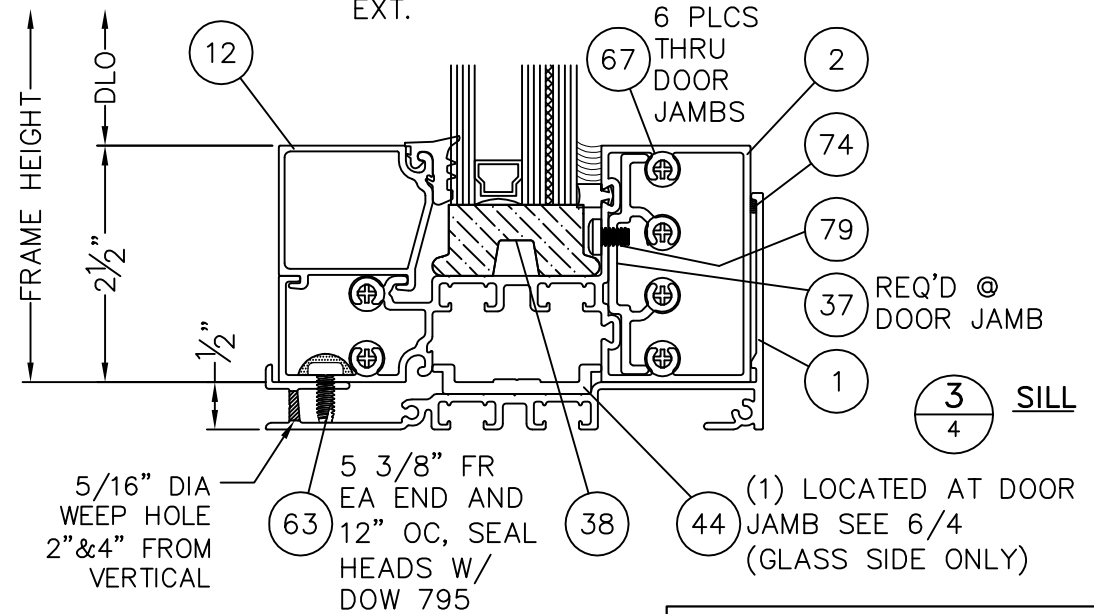
VIEW A @ HORIZONTAL WATER DAM



5 HEAD
4



4 HORIZONTAL
4



3 SILL
4

TUBELITE
SERIES E/T34000
STOREFRONT SYSTEM
BLAST RESISTANT

3056 WALKER RIDGE DRIVE N.W.
WALKER, MICHIGAN 49544
PH: 800.566.2227
FX: 616.301.0095
WEB SITE: WWW.TUBELITEINC.COM

TUBELITE
DEPENDABLE
LEADERS IN ECO-EFFICIENT STOREFRONT CURTAINWALL AND ENTRANCE SYSTEMS

REVISION HISTORY:

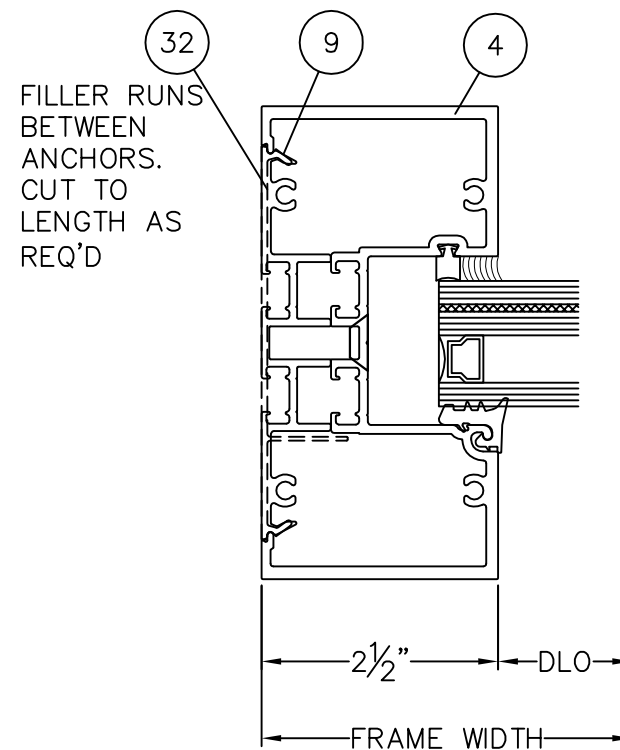
REV	DATE	DESCRIPTION	ORIGINAL	RELEASE
0	5.13.15			

DATE: 05.13.15
DRAWING NUMBER: E/T34000-BLAST
DRAWN:
FINAL REVIEW:
SCALE: N.T.S.
REVISION: 0

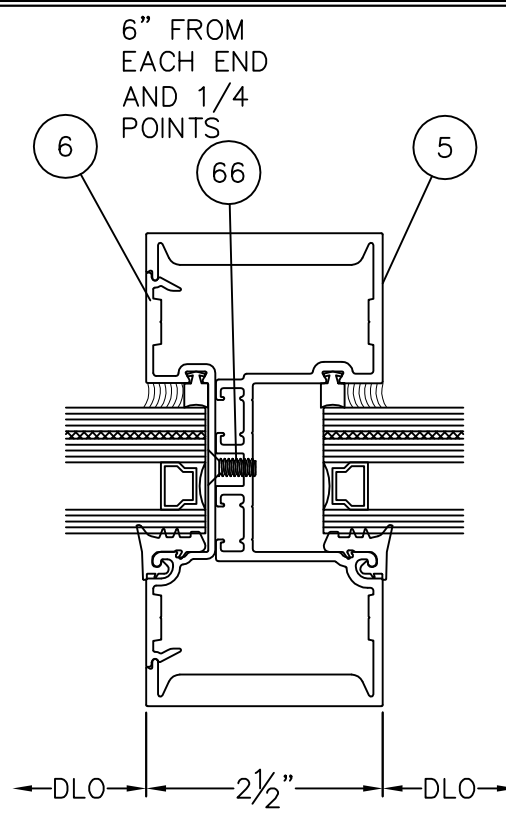
SHEET NAME: SECTION DETAILS

SHEET: 4 OF 7

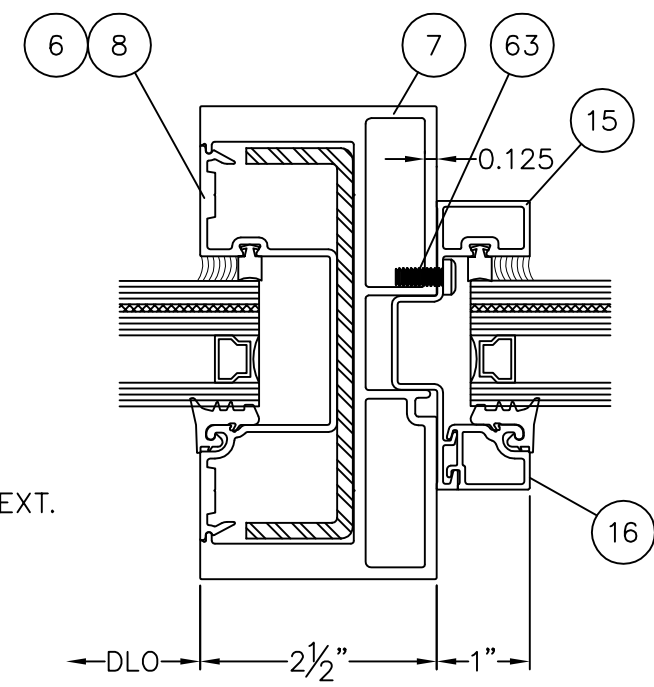
7/28/2015
LUCAS A. TURNER, P.E.
FL PE # 58201
TURNER ENGINEERING & CONSULTING, INC.
(COA # 29779)
1239 JABARA AVE.
NORTH PORT, FL 34288
PH. 941-380-1574



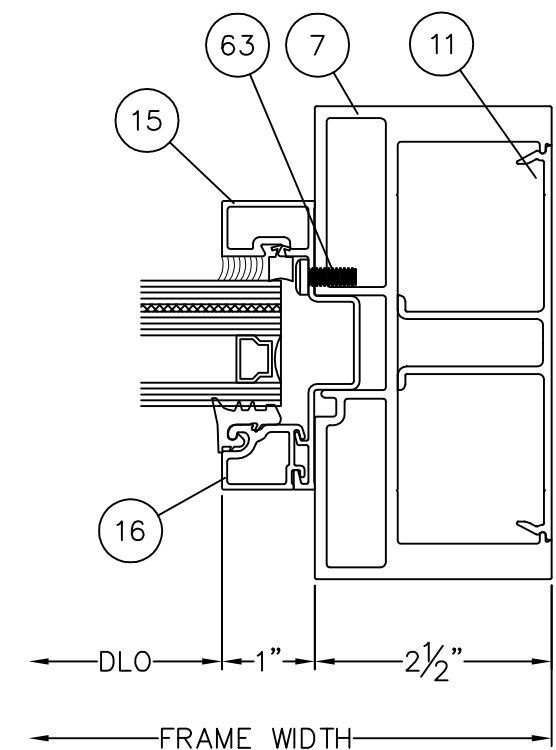
1 JAMB MULLION WITH JAMB ANCHORS



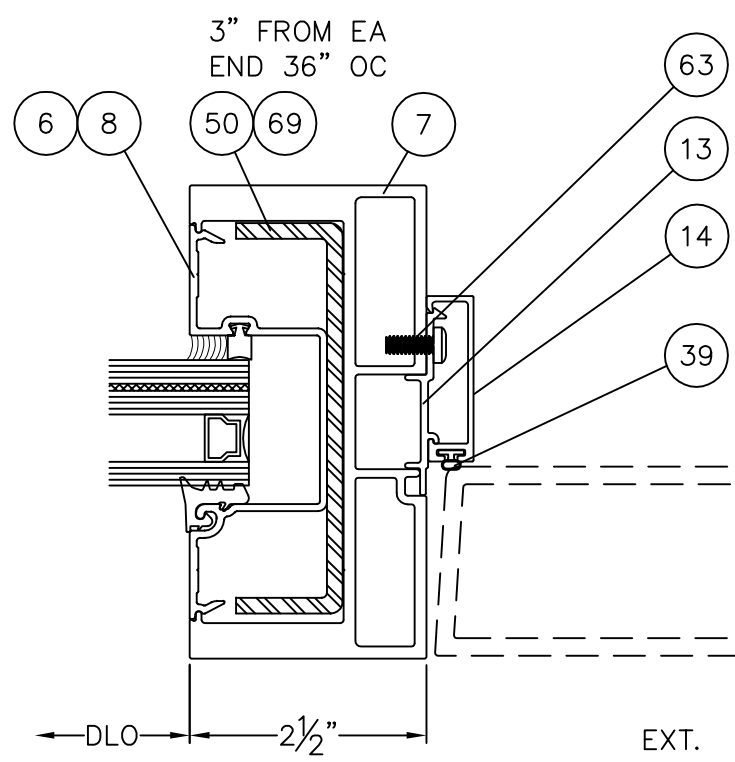
2 HD MULLION



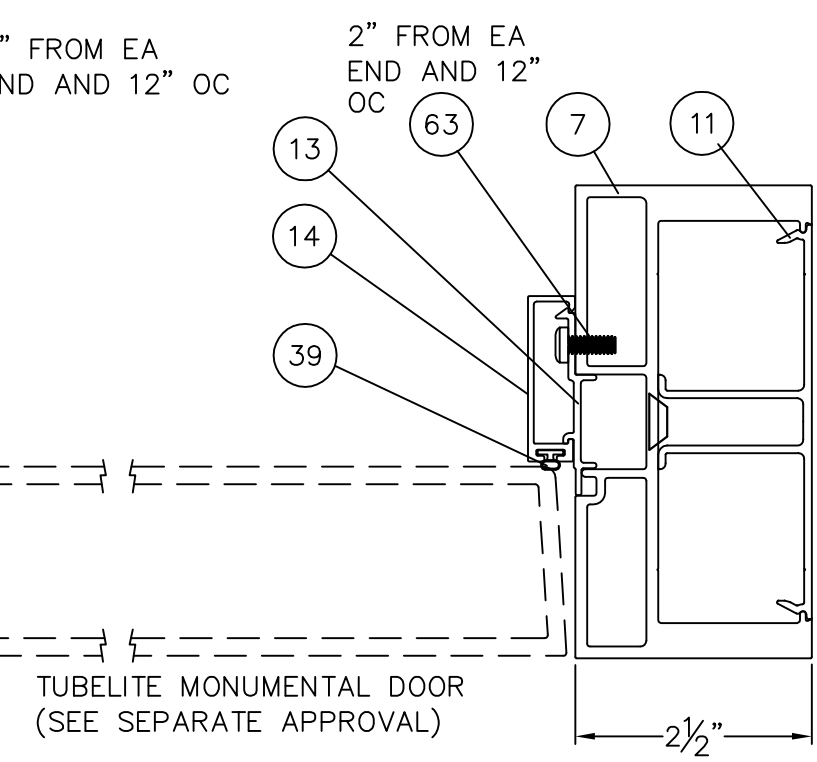
3 HD DOOR MULLION @ TRANSOM



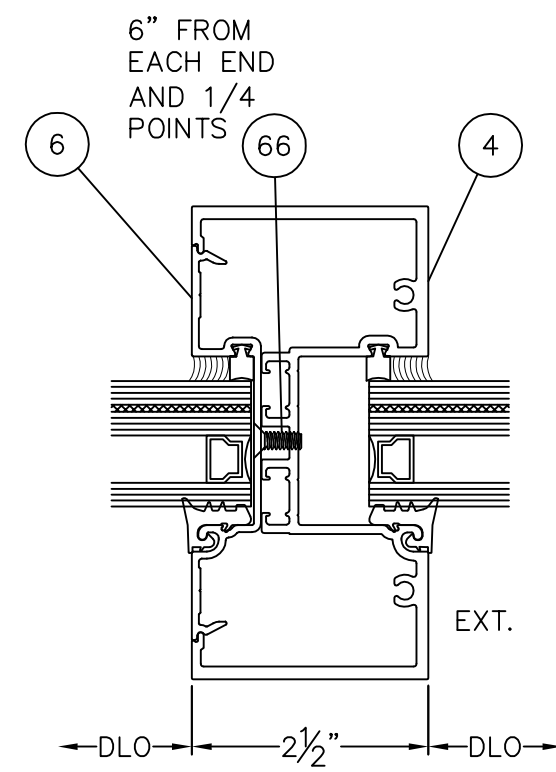
4 HD DOOR JAMB @ TRANSOM



5 HD DOOR MULLION @ DOOR



6 HD DOOR JAMB @ DOOR



7 STANDARD MULLION

TUBELITE MONUMENTAL DOOR (SEE SEPARATE APPROVAL)

TUBELITE
SERIES E/T34000
STOREFRONT SYSTEM
BLAST RESISTANT

3056 WALKER RIDGE DRIVE N.W.
WALKER, MICHIGAN 49544
PH: 800.566.2227
FX: 616.301.0095
WEB SITE: WWW.TUBELITEINC.COM

TUBELITE
DEPENDABLE
LEADERS IN ECO-EFFICIENT STOREFRONT,
CURTAINWALL AND ENTRANCE SYSTEMS

REVISION HISTORY:

REV	DATE	DESCRIPTION
0	5.13.15	ORIGINAL RELEASE

DATE: 05.13.15
DRAWING NUMBER:
E/T34000-BLAST
DRAWN:
FINAL REVIEW:
SCALE: N.T.S.
REVISION: 0

SHEET NAME:
SECTION DETAILS
SHEET: 5 OF 7

7/28/2015
LUCAS A. TURNER, P.E.
FL PE # 58201
TURNER ENGINEERING &
CONSULTING, INC.
(COA # 29779)
1239 JABARA AVE.
NORTH PORT, FL 34288
PH. 941-380-1574

