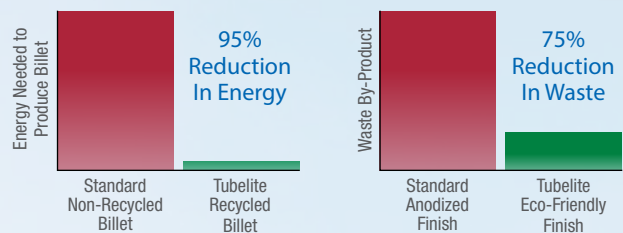


Specify Ecoluminum® for your next LEED Project

The composition of this eco-efficient billet has been specially formulated to an industry-leading average of 70% reclaimed aluminum incorporating a post-consumer content minimum of 15%. Content details are tracked by job and can be provided upon request at time of purchase.

- Recycled Content Averaging 70%
- Post Consumer Content Averaging 15%
- Contributes Toward LEED MR4.1 & 4.2 Recycled Content



Environmentally-Friendly Anodized Finishes

Tubelite also made changes to our etch chemistry, in the anodize process, from traditional caustic etch to a more environmentally-friendly acid etch process with a "frostier" matte finish.

- Low gloss level reduces glare in bright sunlight
- 75-80% less waste than the traditional caustic-etch process
- Uses a matte finish with less reflectance for a soft look, with more visual appeal
- Reduction of energy used in the acid etch process



More recycled content, eco-efficient finishes

TUBELITE®
DEPENDABLE

LEADERS IN ECO-EFFICIENT STOREFRONT,
CURTAINWALL AND ENTRANCE SYSTEMS

Other Green High Performance Products from Tubelite®

Therml=Block® HIGH PERFORMANCE THERMAL FRAMING

- Dramatically reduce the transfer of hot and cold temperatures
- Outstanding craftsmanship, strength, and durability
- No frost buildup

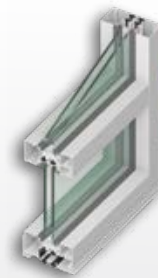
Tubelite Therml=Block is a full line of high performance thermal framing that provides superior insulation through improved thermal breaks and air baffles, while also providing for structural and aesthetic requirements. The Therml=Block system has been designed for use as a complete package of entrance, storefront and curtainwall products, or individually as needed.



400TU Thermal
Curtainwall



Thermal
Entrances



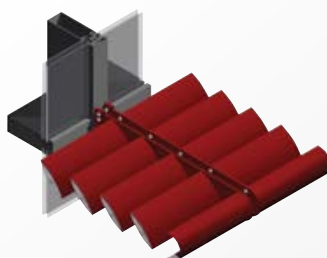
TU24000 Thermal
Storefront



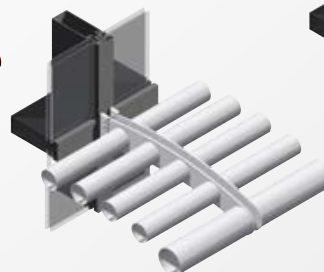
900RW
Ribbon Window

maxBLOCK® Sunshades by TUBELITE®

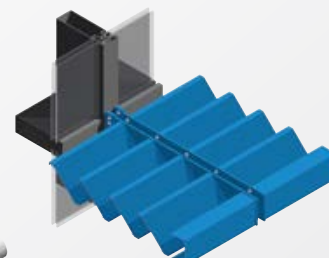
- Minimize solar heat gain through efficient shade factor design
- Reduce cooling costs and energy use
- Patented detachable mounting bracket designed to allow reglazing
- Variety of blade and outrigger styles available
- Finishes available to match or contrast with Curtainwall framing



Airfoil



Tubular



"Z" Blade

Sustainability at Tubelite®

Tubelite is committed toward integrating both economic and environmental aspects into our business strategies. We are proud to provide products and services that represent exceptional energy efficient solutions now without compromising the environmental impact on future generations. Tubelite selectively partners with vendors that share this same passion and collaboratively seeks ways toward improving our overall carbon footprint.

Our dedication to sustainability is not only apparent within our strategic planning processes but in the values we live each day. We support individual employee and team efforts related to the environment and community relations. Tubelite actively participates in environmentally focused associations such as USGBC and AIA.

We continually search for opportunities that maximize LEED credits for our clients.

OUR GREEN GOALS

Significantly Reduce:

- Greenhouse Gases
- Solid Waste
- Water Use

OUR GREEN MISSION

To become the leader in providing our clients with the optimal overall package. Superior energy efficient and labor-saving products; environmentally mindful material and finishes; premier service and competitive pricing.