

## Model 147

PIVOTS AND PIVOT SETS

OFFSET HUNG

### Application

- Exterior or Interior Doors
- Weight to 600 lbs.\*
- Door Width up to 4'0" (1219mm)
- Handed

### Product Description & Features

- 180 top pivot included
- M19 intermediate pivot required (order separately)
- 3/4" (19mm) offset (measured from centerline of pivot to face of door)
- Door edges must be beveled 1/8" in 2"
- Bottom pivot mounts directly to floor
- Doors will swing 180°, trim permitting
- Uses same arm and cap as 27 floor closer
- Non-ferrous base material
- Doors 60" (1524mm) to 90" (2286mm) in height should use one intermediate pivot. Each additional 30" (762mm) of door height warrants another intermediate pivot
- Furnished with wood and machine screws

### Optional Features

- Available for 1-1/2" (38mm) offset (door weight 350 lbs.) for doors with cladding or frame molding
- Extended spindles available in 1/2" (13mm) increments up to 2" (51mm) longer than standard

### Compliance

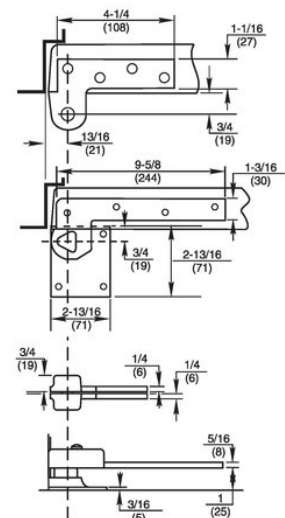
- Available for fire door assemblies up to three hours (ferrous material) – specify F147. Intermediate pivot required by UL. Specify FM19 (order separately)
- For 20-minute label suffix "-20" to the part number
- ANSI/C07162/C07202

\* Door size & weight guidelines are determined using the appropriate number of intermediate pivots



### Technical Information

(Frame stop required)



**RIXSON**  
ASSA ABLOY

Experience a safer  
and more open world

## Model 180

### Application

- Full Mortise
- Non-handed

### Product Description & Features

- Standard top pivot for most offset pivot sets and floor closers
- Oil-impregnated sintered bronze bushing
- 3/4" (19mm) offset (measured from centerline of pivot to face of door)
- Non-ferrous base material
- Furnished with wood and machine screws

### Optional Features

- Available for 1-1/2" (38mm) offset
- For extra wide or high traffic prefix "H" – H pivots have heavy-duty needle bearings; available in 1-1/2" (38mm) offset
- Available with longer than standard pivot pins. Increments are 1/4" (6mm), 1/2" (13mm), 3/4" (19mm) only

### Compliance

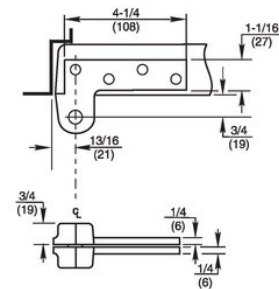
- Available for fire door assemblies (ferrous material) – specify F180 or FH180
- For 20-minute label suffix "-20" to the part number

## PIVOTS AND PIVOT SETS OFFSET HUNG TOP PIVOTS



### Technical Information

(Frame stop required)



## Model 180 X 102

### Application

- Full Mortise
- Handed

### Product Description & Features

- Special top pivot for doors in deep reveals or unusual door details where one leaf is too long for the normal door or frame portion
- Oil-impregnated sintered bronze bushings
- Non-ferrous base metal
- May be inverted
- Furnished with wood and machine screws

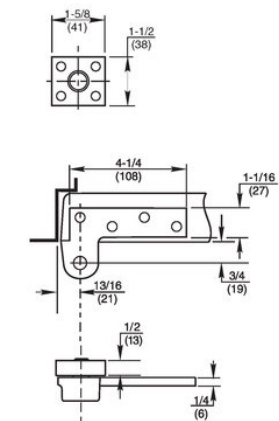
### Optional Features

- Available for 1-1/2" (38mm) offset
- Available with longer than standard pivot pins. Increments are 1/4" (6mm), 1/2" (13mm), 3/4" (19mm) only



### Technical Information

(Frame stop required)



**RIXSON**  
**ASSA ABLOY**

Experience a safer  
and more open world

## PIVOTS AND PIVOT SETS

## INTERMEDIATE OR SIDE JAMB PIVOTS

**Application**

- Heavy-Duty Full Mortise
- Handed

**Product Description & Features**

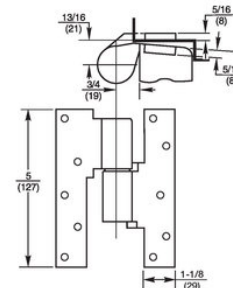
- Used when frame condition does not allow standard top pivot
- Lateral load-bearing
- Maintains door alignment
- Aids in installing floor closers and bottom pivots
- Heavy-duty needle bearing
- 3/4" (19mm) offset standard
- Door edges must be beveled in 1/8" in 2"
- Non-ferrous base metal
- Doors 60" (1524mm) to 90" (2286mm) in height should use one intermediate pivot. Each additional 30" (762mm) warrants another intermediate pivot
- Furnished with wood and machine screws

**Optional Features**

- Available for 1-1/2" (38mm) offset

**Compliance**

- Available for fire door assemblies (ferrous material) – specify FM190
- For 20-minute label suffix "-20" to part number
- ANSI/C07321/C07371

**Model M190****Technical Information****Model ML19****Application**

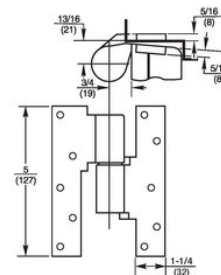
- Full Mortise
- Lead-Lined, Heavy or High Traffic Doors
- Handed

**Product Description & Features**

- Load-bearing
- Screw holes spaced to straddle lead lining in center of door. Also use on extra heavy or high traffic door
- Maintains door alignment
- Aids in installing closers and pivots
- Door edges must be beveled in 1/8" in 2"
- Available to accommodate door thicknesses 1-3/4" (44mm), 2" (51mm), 2-1/4" (57mm), 2-1/2" (64mm), or 3" (76mm) – specify thickness when ordering
- Non-ferrous base material
- Doors 60" (1524mm) to 90" (2286mm) in height should use one intermediate pivot. Each additional 30" (762mm) warrants another intermediate pivot
- Furnished with wood and machine screws

**Compliance**

- Available for fire door assemblies – 1-3/4" (44mm) door only – specify FML19
- For 20-minute label suffix "-20" to the part number
- ANSI/C07311

**Technical Information**

**RIXSON**  
**ASSA ABLOY**

Experience a safer  
and more open world