

TU24000 Series Storefront

Dual cavity pour and debridge ultra-thermal barrier

Tubelite's most popular thermally broken storefront line has been expanded and enhanced with an additional P&D thermal break. The TU24000 Series has the same 2" x 4-1/2" profile as the T14000 system, and offers standard screw-spline or shear block connections.

TU24000 Dual cavity pour and debridge ultra-thermal barrier storefront is recommended for use on ground floor storefront or protected low-rise applications. Framing has 1/2" bite for use with glass or panels up to 1" thick. Verticals can be steel-reinforced for high performance against strong windloads. Tubelite 3700 Series operable windows can be glazed into the storefront framing pocket for natural ventilation. Framing is compatible with Tubelite's Medium and Wide Stile Thermal=Block™ Doors.

Our TU24000 Series Storefront products are subjected to thorough testing by an independent laboratory, ensuring that you get the highest quality storefront framing products that the industry has to offer.

Thermal=Block
HIGH-PERFORMANCE THERMAL FRAMING

**400TU High Performance
Thermal Curtainwall**

ALSO
USED
WITH

Thermal Entrances



Wilmington Gardens, Salt Lake City, UT
Photographer: Cache Valley Photographers

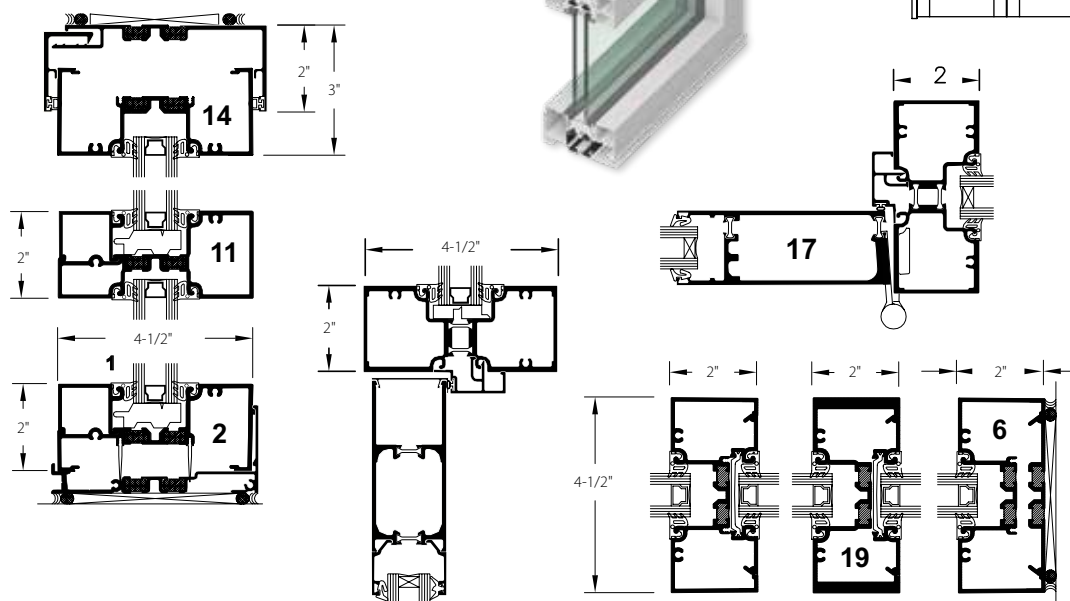
TUBELITE®
DEPENDABLE

LEADERS IN ECO-EFFICIENT STOREFRONT,
CURTAINWALL AND ENTRANCE SYSTEMS

TU24000 Series Storefront

Dual cavity pour and debridge ultra-thermal barrier

ThermalBlock
HIGH-PERFORMANCE THERMAL FRAMING



System Features:

- Standard 2" (50.8mm) sight line on verticals and horizontals
- 4-1/2" (114.3mm) system depth
- Dual cavity pour and debridge ultra-thermal barrier for maximum thermal performance with Azon's Lancer® mechanical lock
- EPDM wedge type gaskets for 1" glass or panel thickness
- Glass centered in the system depth

Optional Features:

- Screw-spline or shear block connections
- Steel reinforcing if required
- Easily integrates with standard or thermal doors
- 7 anodized and 19 painted standard finishes

TU24000 Series Product Specifications

Application: Low and mid-rise commercial buildings requiring high energy and condensation resistance performance

Description: 2" x 4-1/2" dual thermal barrier center set storefront system, screw spline or shear block connections, exterior or interior glazed

Face Width:	Overall Depths:	Glass:	Air Infiltration:	Water Infiltration:	Structural:	U-Factor**:	CRF:	Acoustics:
2"	4-1/2"	1" std. (1/8" to 1-1/8")	0.06 CFM / Ft.2 @ 6.24 PSF	12 PSF - Static 12 PSF - Dynamic	30 PSF - Design 45 PSF - Overload	0.31 - Thermally Broken	69 _F 68 _G	STC 37 OITC 31

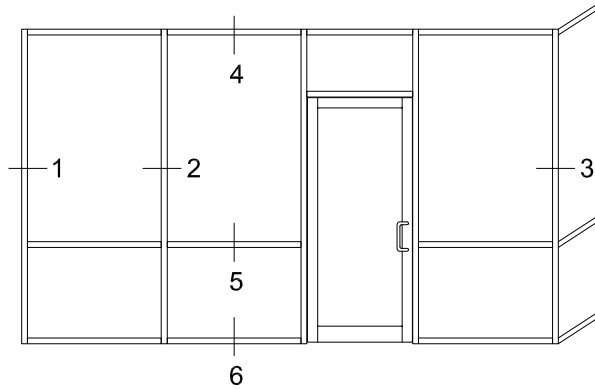
** U-Factor per NFRC 100. Refer to the U-Value table at: www.tubeliteinc.com/products/storefront/thermalblock-tu24000/

DISCLAIMER: Tubelite takes no responsibility for product selection or application, including, but not limited to, compliance with building codes, safety codes, laws, merchantability or fitness for a particular purpose; and further disclaims all liability for the use, in whole or in part, of this Technical Guide in preparation of project specifications and/or other documents. Technical Guides are subject to change at any time, without notice, and at Tubelite's sole discretion. ©2017 Tubelite Inc.

051520

TUBELITE
DEPENDABLE

LEADERS IN ECO-EFFICIENT STOREFRONT,
CURTAINWALL AND ENTRANCE SYSTEMS

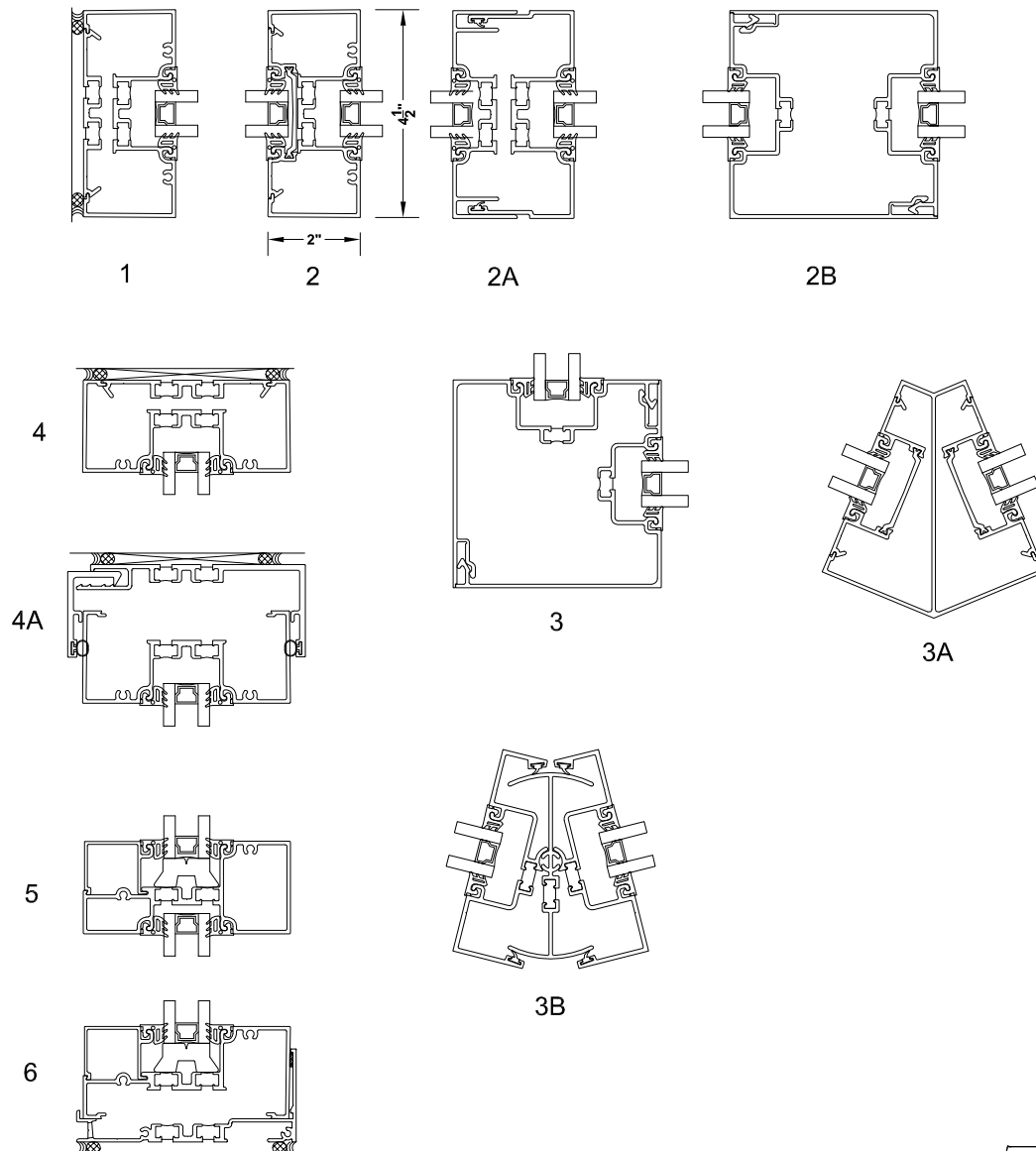


Tubelite reserves the right to change system configuration without prior notice when deemed necessary for product improvements.

Laws and building & safety codes governing the design and use of glazed entrance, window and curtain wall systems vary widely. Tubelite does not control the selection of product configurations, operating hardware or glazing materials, and assumes no responsibility thereof.

Outside Set Standard Details

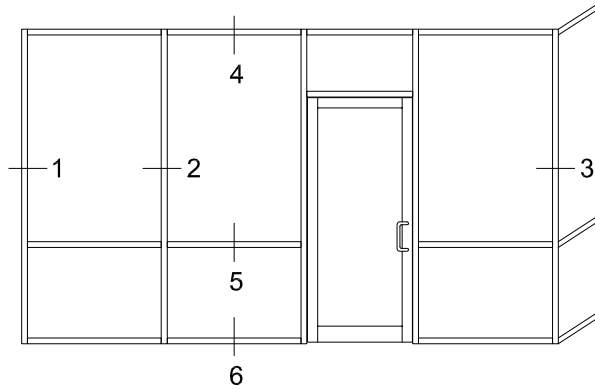
1/4 scale



June 2020

TUBELITE®
DEPENDABLE
LEADERS IN ECO-EFFICIENT STOREFRONT,
CURTAINWALL AND ENTRANCE SYSTEMS

For specific product applications, contact your Tubelite representative.
Details on this page represent standard details found on our website.
For more options, visit our website at www.tubeliteinc.com/tu24000/

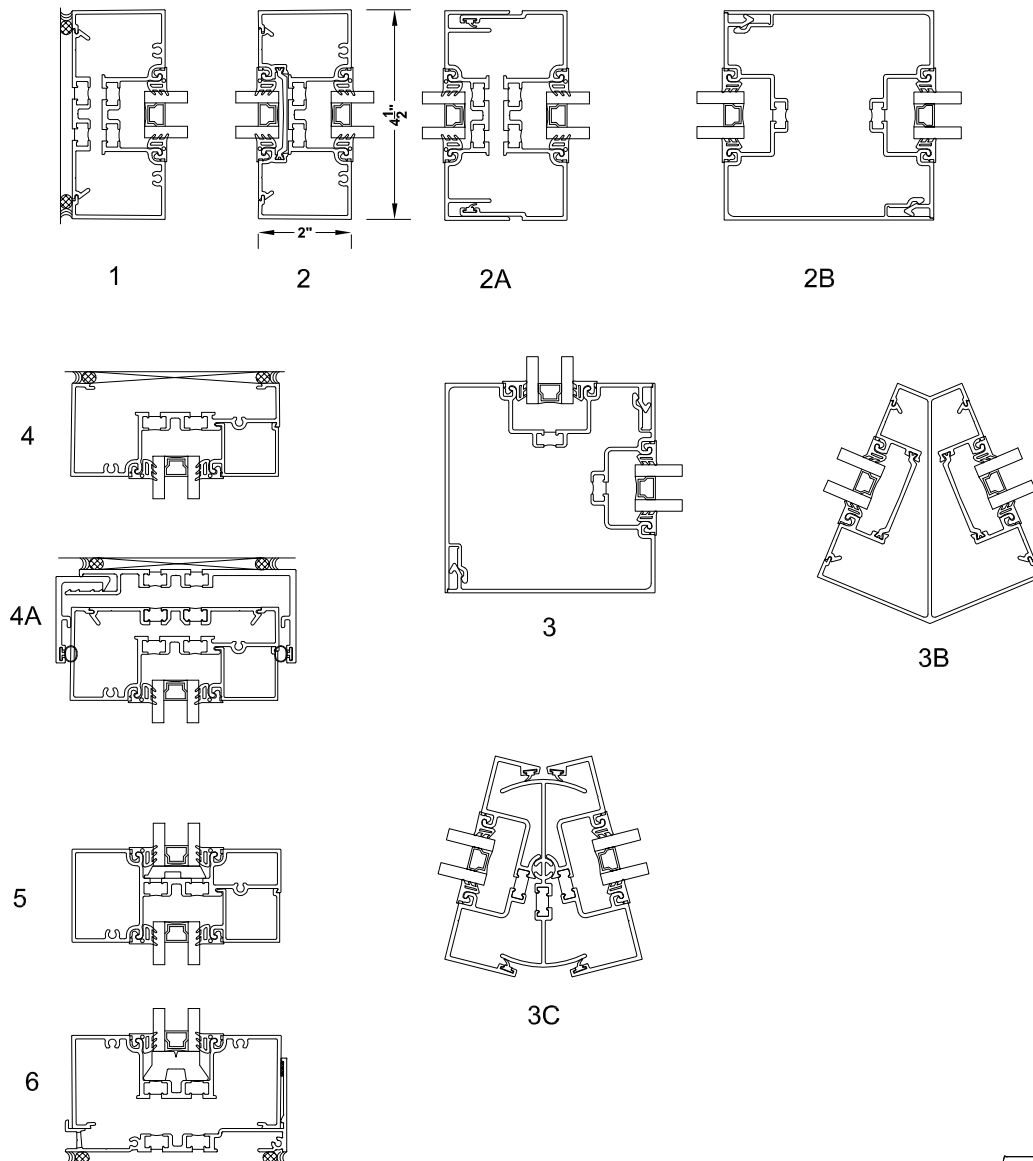


Tubelite reserves the right to change system configuration without prior notice when deemed necessary for product improvements.

Laws and building & safety codes governing the design and use of glazed entrance, window and curtain wall systems vary widely. Tubelite does not control the selection of product configurations, operating hardware or glazing materials, and assumes no responsibility thereof.

Inside Set Standard Details

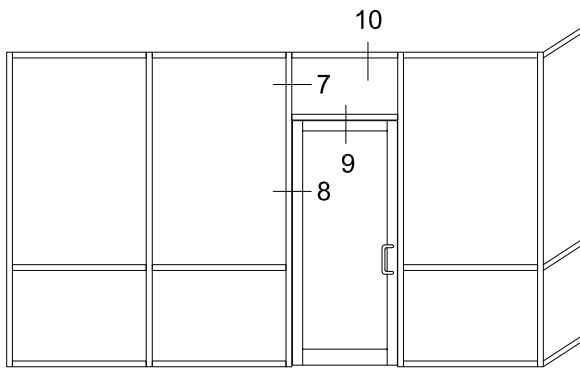
1/4 scale



June 2020

TUBELITE®
DEPENDABLE
LEADERS IN ECO-EFFICIENT STOREFRONT,
CURTAINWALL AND ENTRANCE SYSTEMS

For specific product applications, contact your Tubelite representative.
Details on this page represent standard details found on our website.
For more options, visit our website at www.tubeliteinc.com/tu24000/

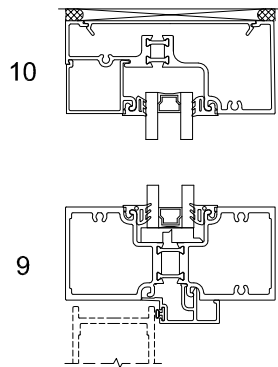
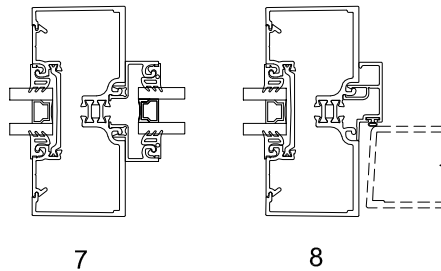


Tubelite reserves the right to change system configuration without prior notice when deemed necessary for product improvements.

Laws and building & safety codes governing the design and use of glazed entrance, window and curtain wall systems vary widely. Tubelite does not control the selection of product configurations, operating hardware or glazing materials, and assumes no responsibility thereof.

Door and Transom Standard Details

1/4 scale



June 2020

TUBELITE®
DEPENDABLE
LEADERS IN ECO-EFFICIENT STOREFRONT,
CURTAINWALL AND ENTRANCE SYSTEMS

For specific product applications, contact your Tubelite representative.
Details on this page represent standard details found on our website.
For more options, visit our website at www.tubeliteinc.com/tu24000/