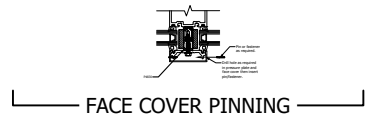
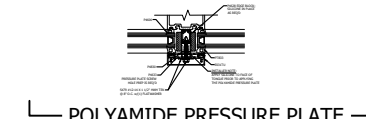


TYPICAL ELEVATION

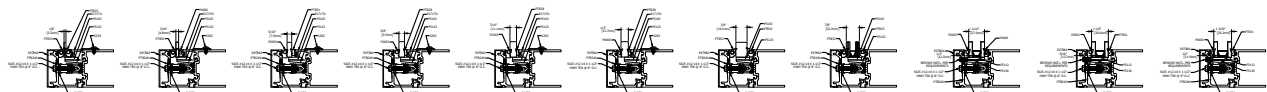
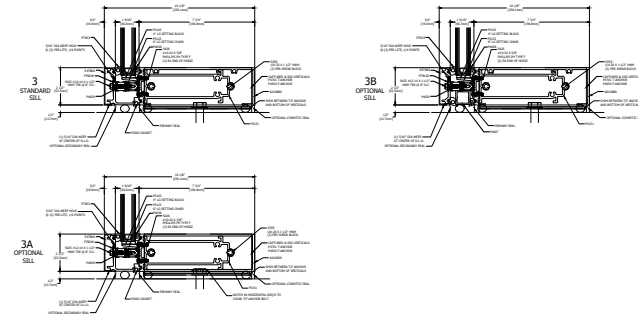
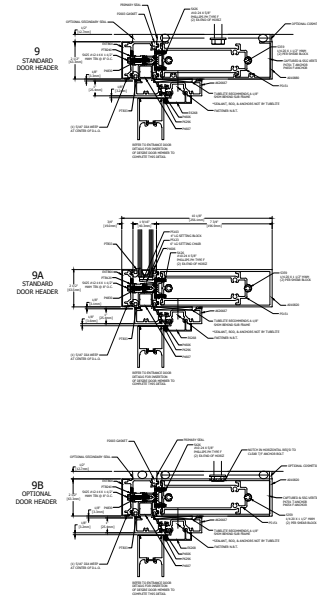
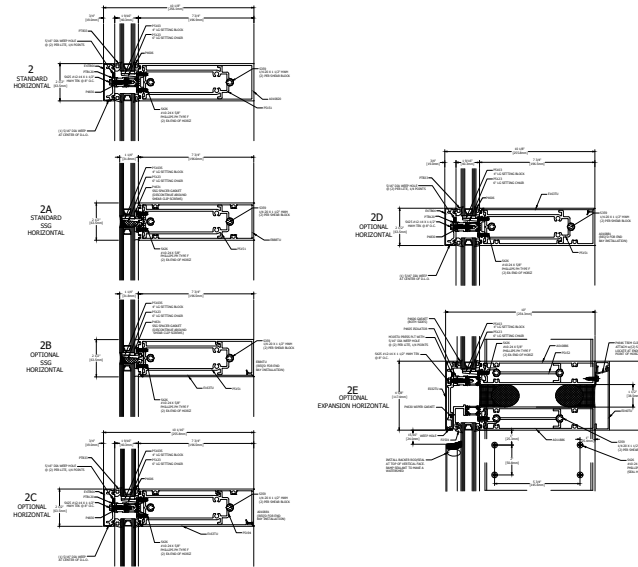
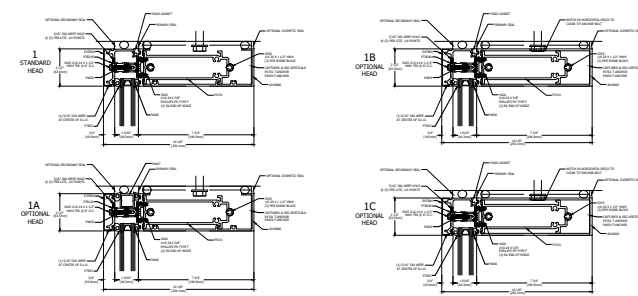
400TU ULTRA THERMAL CURTAIN WALL
 7 3/4" BACK MEMBER, DUAL GLAZE, SHEAR CLIP
 THERMAL PRESSURE PLATE



FACE COVER PINNING

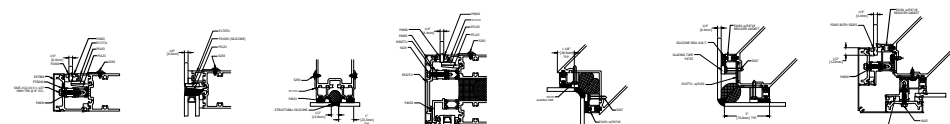


POLYAMIDE PRESSURE PLATE



OPTIONS FOR NON-TYPICAL INFILL

FOR VERTICAL SSG APPLICATIONS USING THESE GLAZING OPTIONS A SPECIAL VERTICAL SSG MULLION MAY BE REQUIRED TO PROVIDE 1/4" SILICONE JOINT THICKNESS. CONSULT TUBELITE ENGINEERING.



OPTIONS FOR 1/4" INFILL

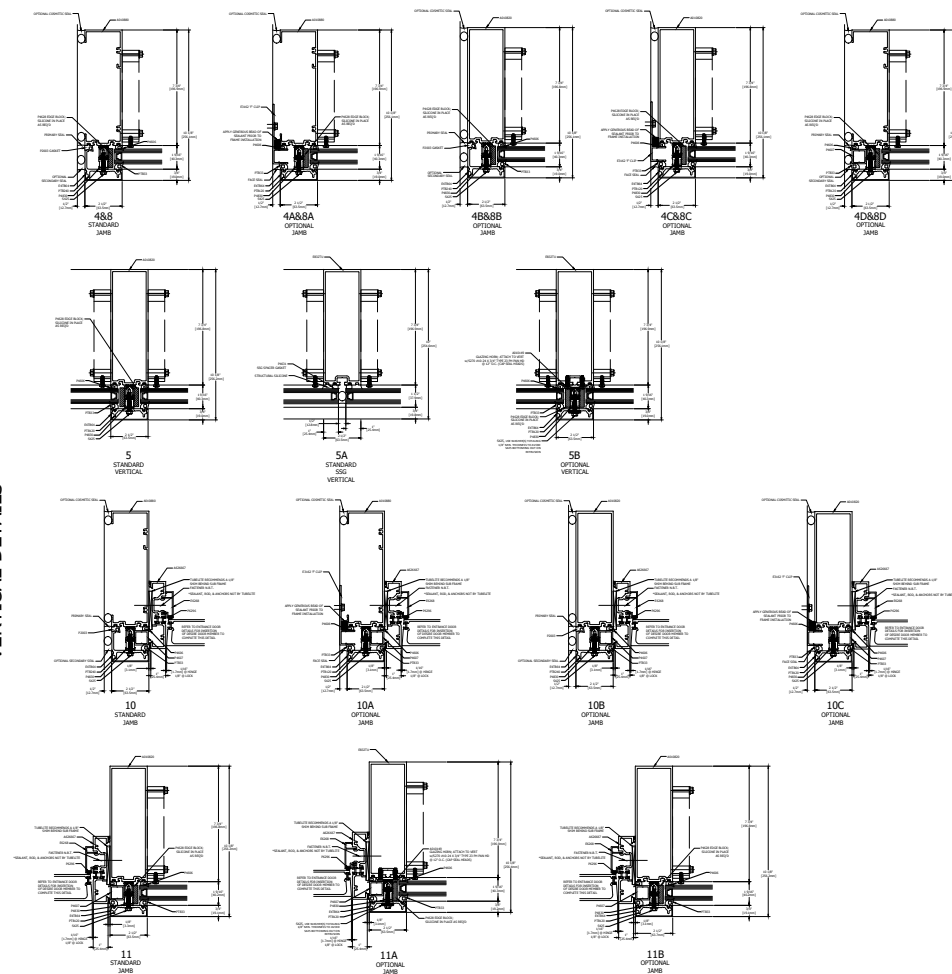
GLAZING INFILL OPTIONS

NOTE: TYPICAL GLASS BITE 1/2" FROM DLO UNLESS NOTED AT DETAIL.

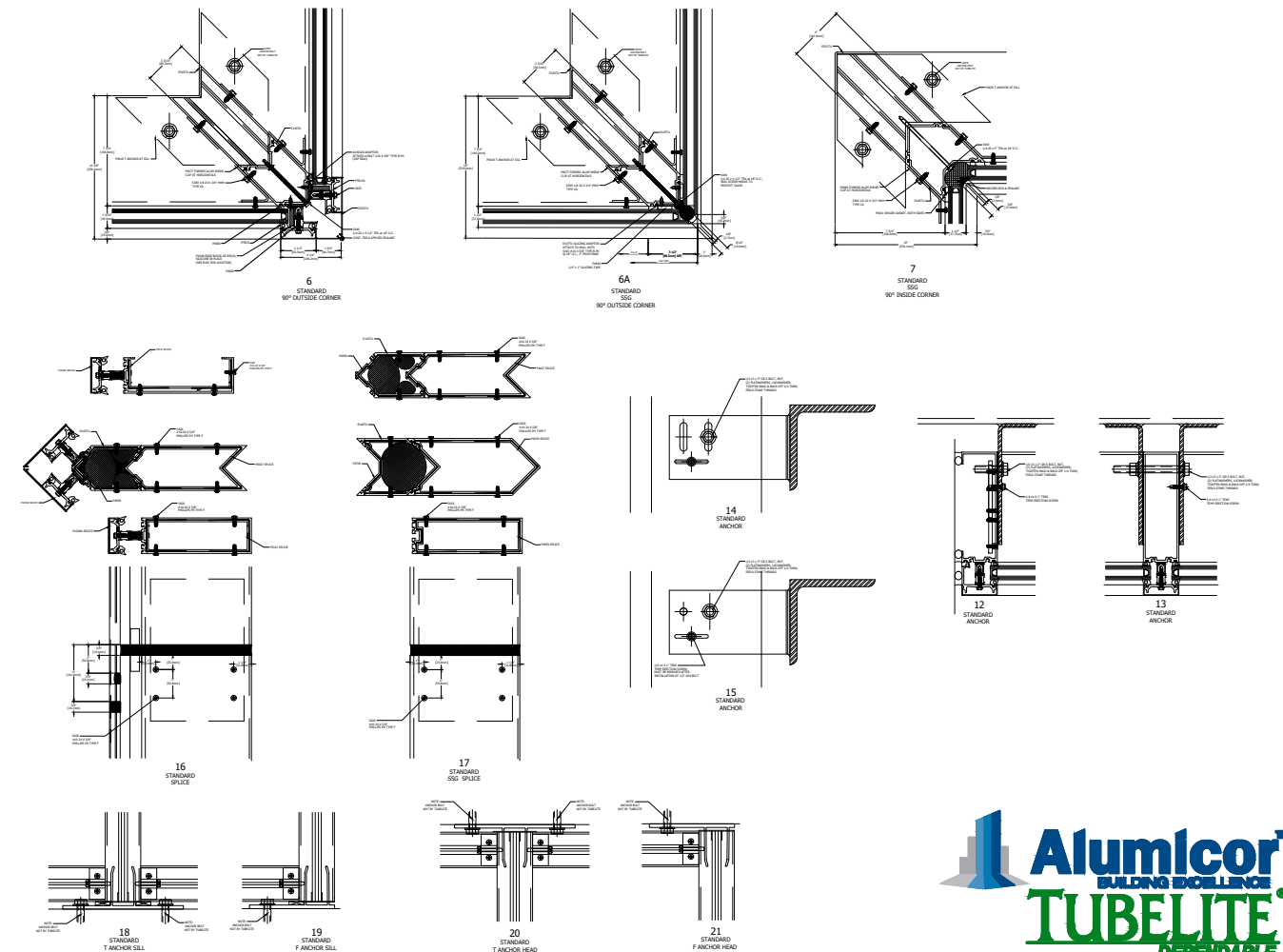
GLASS SHOWN DOES NOT NECESSARILY REPRESENT FINAL CONFIGURATION. CONSULT GLASS MANUFACTURER FOR SPECIFIC GLASS MAKE UP.

USE OF SSG VERTICALS WITH THESE GLAZING OPTIONS REQUIRE 1/4" SILICONE JOINT THICKNESS FOR OPTIMUM STRUCTURAL SILICONE PERFORMANCE. CONSULT TUBELITE ENGINEERING FOR ANY CUSTOM CONFIGURATIONS REQUIRED.

VERTICAL DETAILS



SPLICE AND ANCHOR DETAILS



Last Revised: 03/15/23