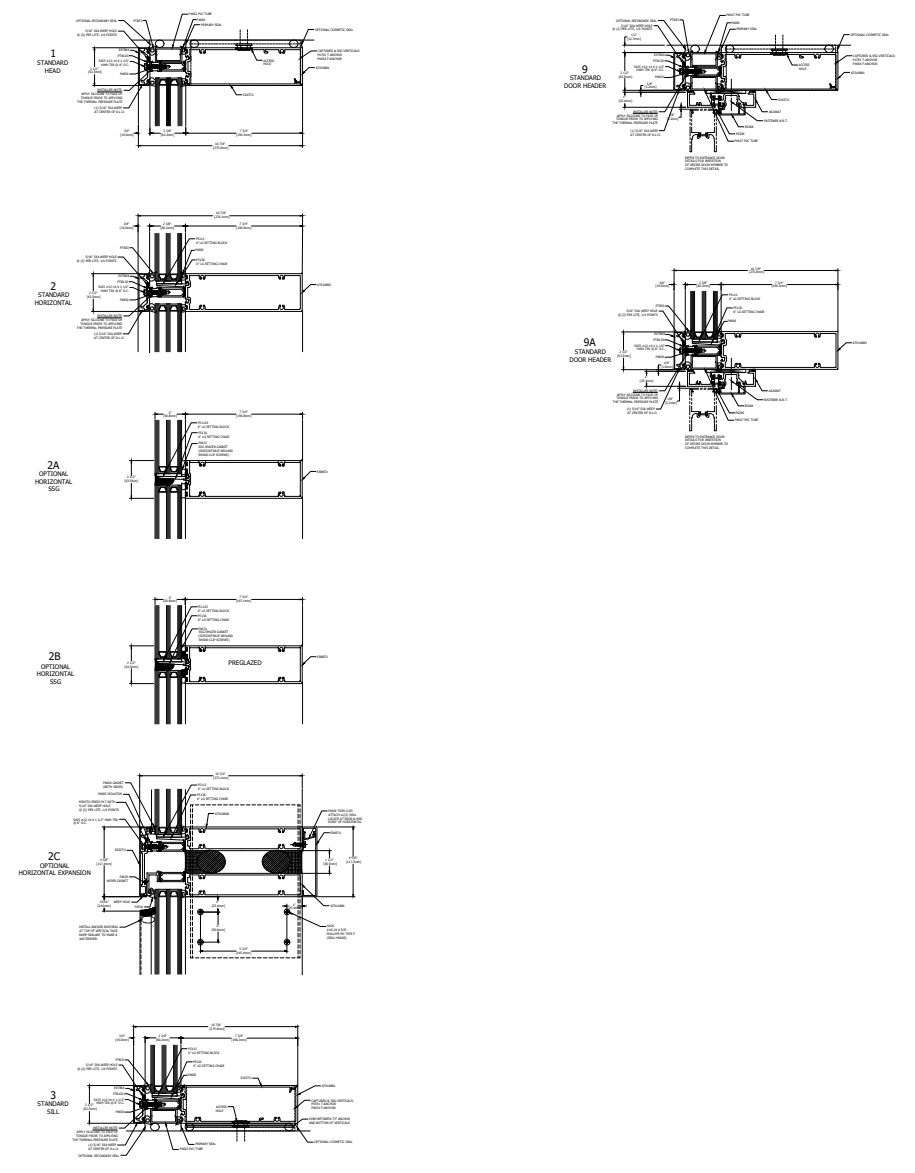
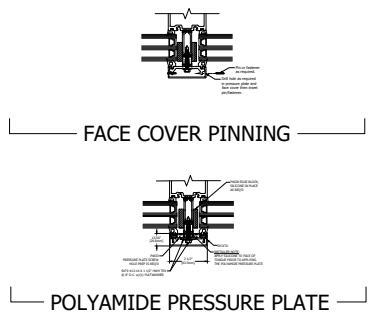


TYPICAL ELEVATION

400TU ULTRA THERMAL CURTAIN WALL
 7 3/4" BACK MEMBER, TRIPLE GLAZE, SCREW SPLNE
 THERMAL PRESSURE PLATE

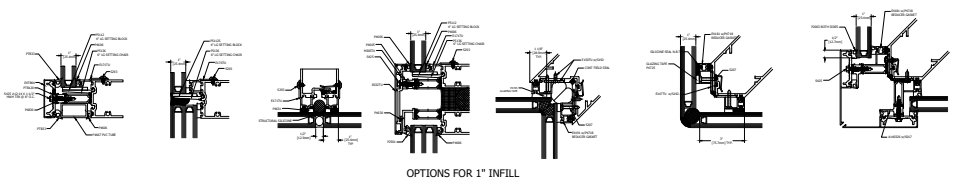


HORIZONTAL DETAILS

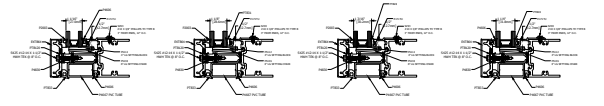


FACE COVER PINNING

POLYAMIDE PRESSURE PLATE



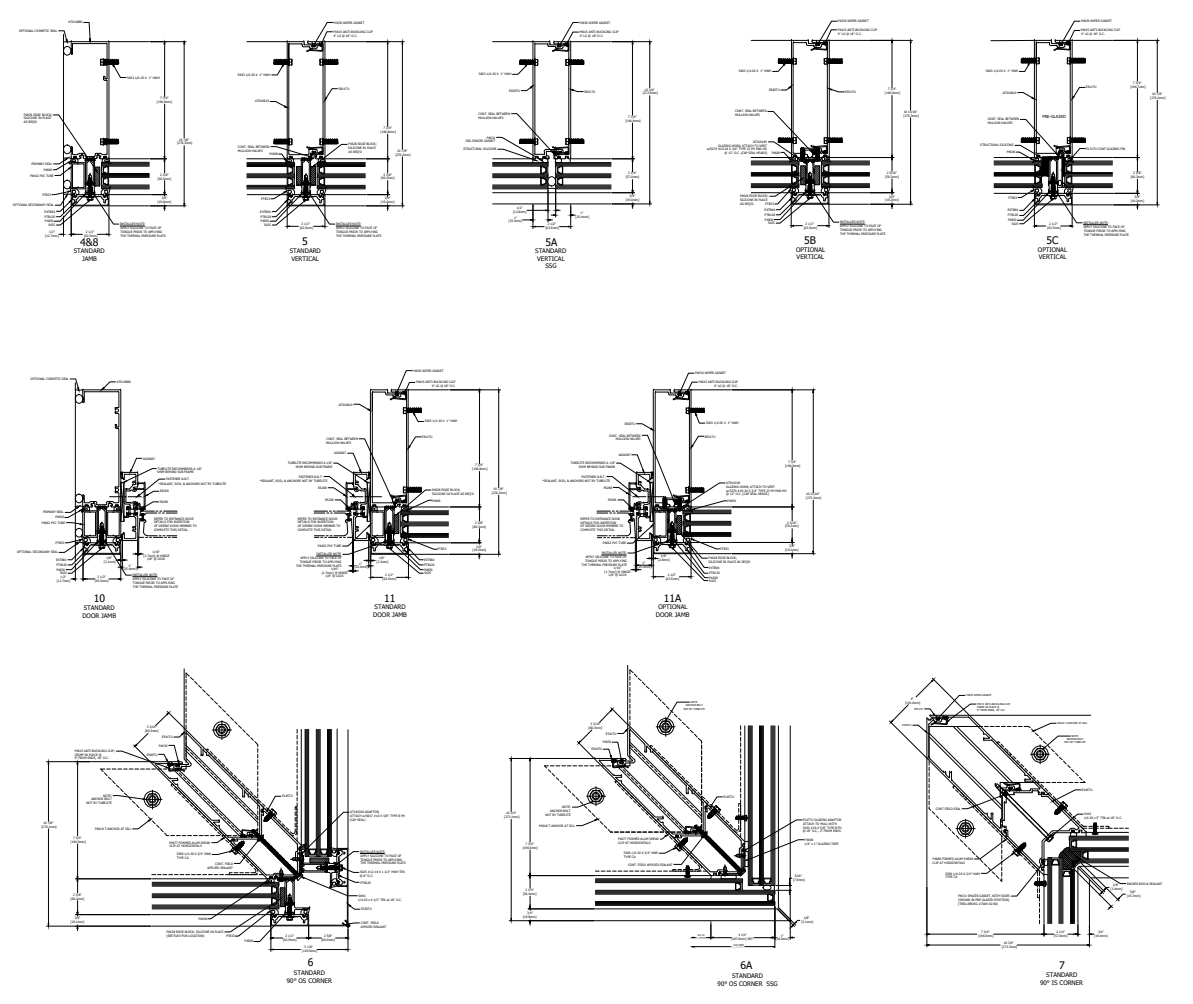
OPTIONS FOR 1" INFILL



GLAZING INFILL OPTIONS

GLASS SHOWN DOES NOT NECESSARILY REPRESENT FINAL CONFIGURATION.
 CONSULT GLASS MANUFACTURERS FOR SPECIFIC GLASS MAKE UP.
 USE OF SSG VERTICALS WITH THESE GLAZING OPTIONS REQUIRE 1/4" SILICONE JOINT THICKNESS FOR
 OPTIMUM STRUCTURAL SILICONE PERFORMANCE. CONSULT TUBELITE ENGINEERING FOR ANY CUSTOM
 CONFIGURATIONS REQUIRED.

VERTICAL DETAILS



SPLICE AND ANCHOR DETAILS

