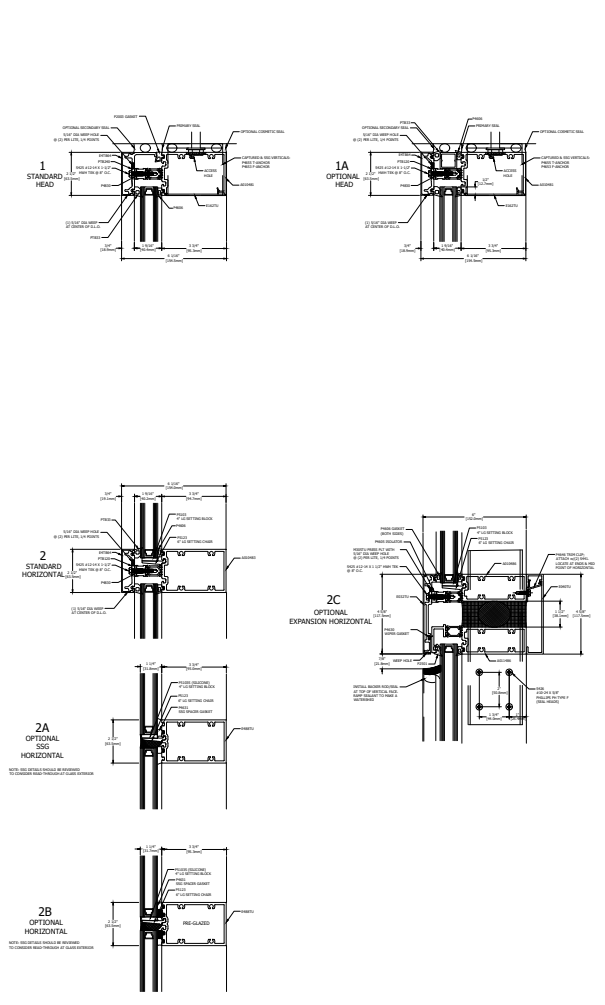
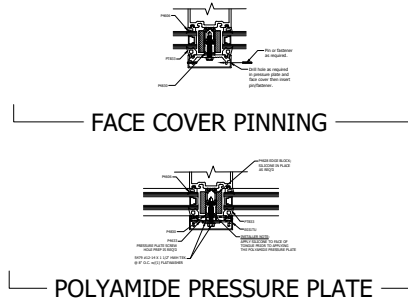
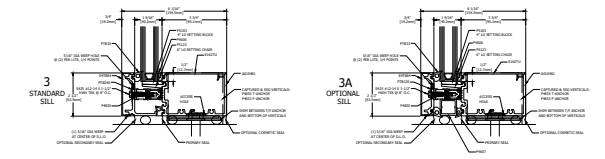
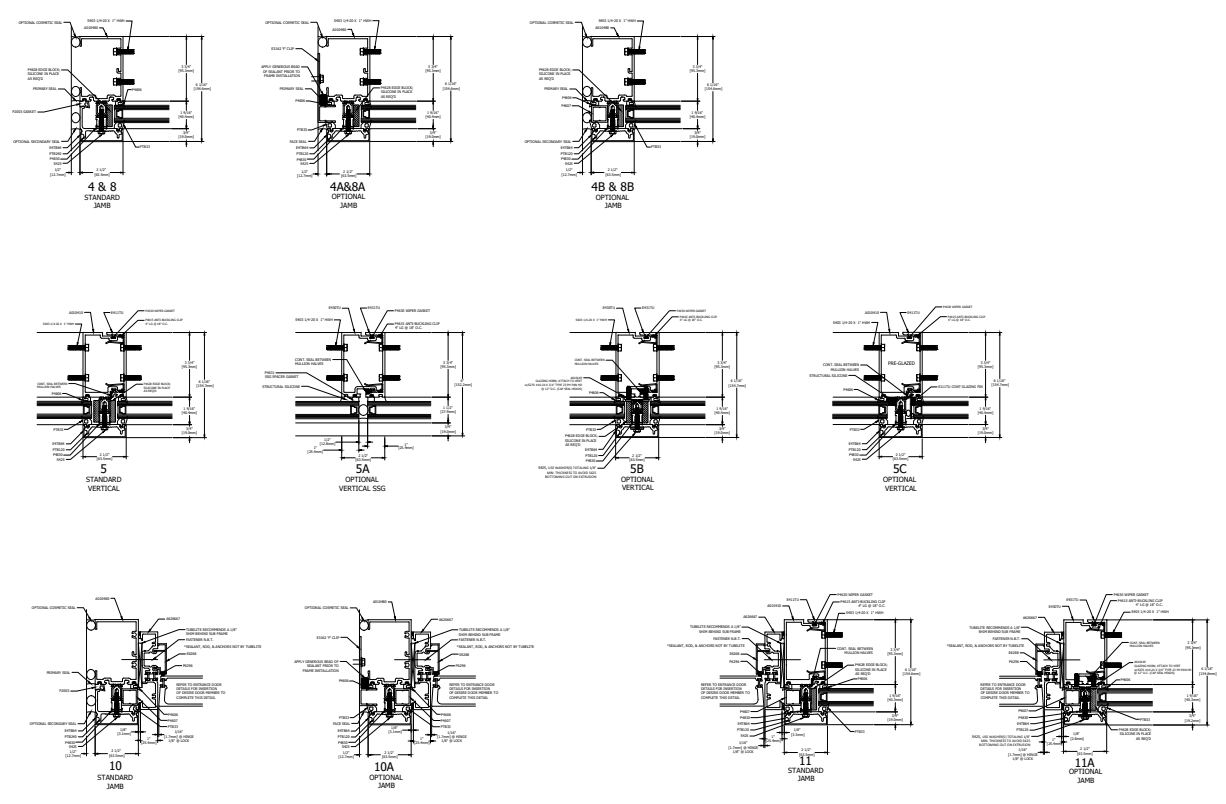


TYPICAL ELEVATION

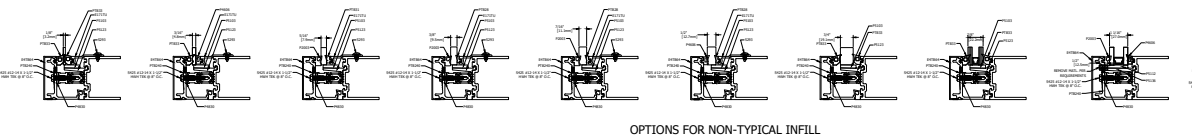
400TU ULTRA THERMAL CURTAIN WALL
 3 3/4" BACK MEMBER, DUAL GLAZE, SCREW SPLNE
 THERMAL PRESSURE PLATE



VERTICAL DETAILS

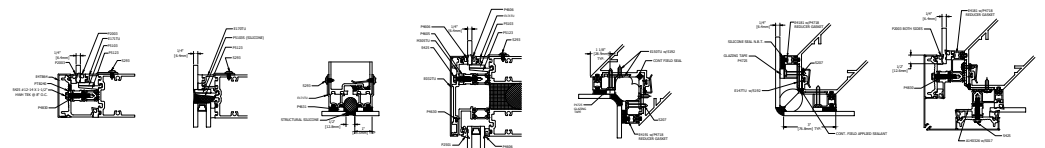


HORIZONTAL DETAILS



OPTIONS FOR NON-TYPICAL INFILL

FOR VERTICAL SSG APPLICATIONS USING THESE
 GLAZING OPTIONS A SPECIAL VERTICAL SSG MULLION
 MAY BE REQUIRED TO PROVIDE 1/4" SILICONE JOINT THICKNESS.
 CONSULT TUBELITE ENGINEERING.



OPTIONS FOR 1/4" INFILL

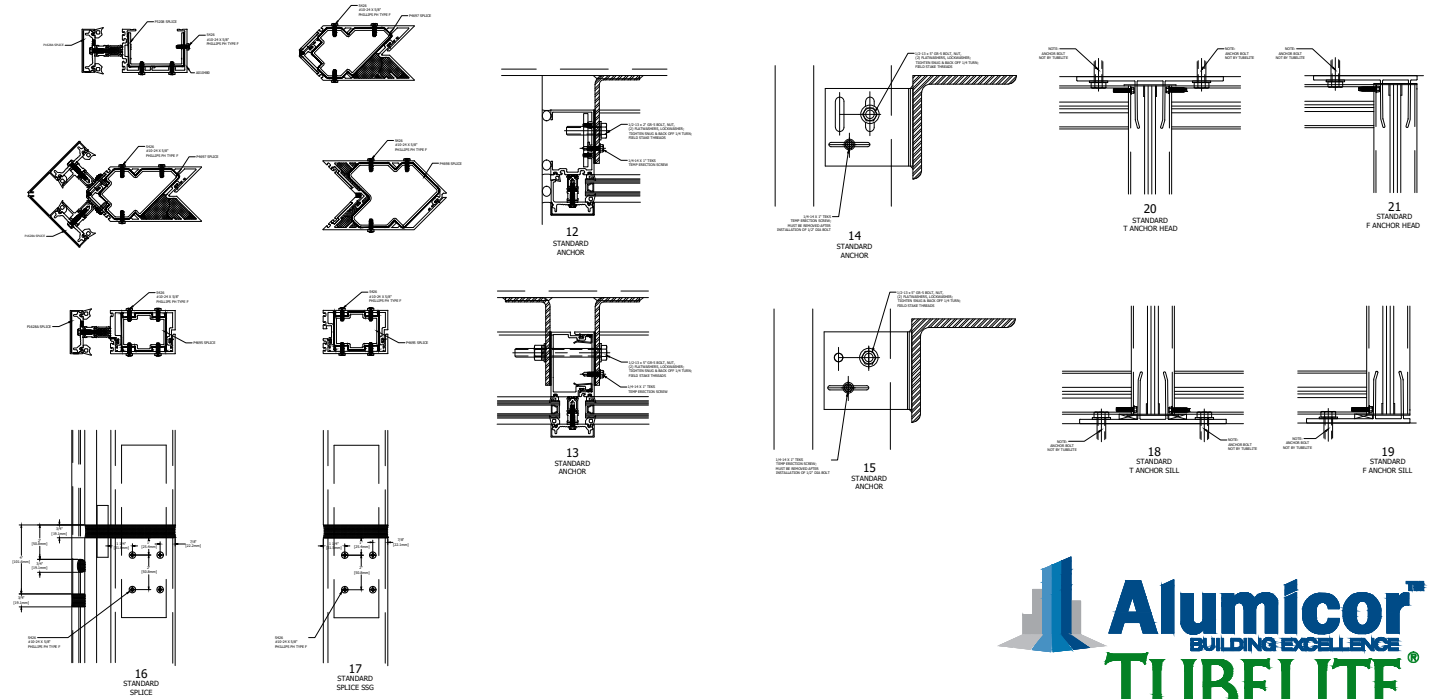
GLAZING INFILL OPTIONS

NOTE: TYPICAL GLASS BITE 1/2" FROM DLO
 UNLESS NOTED AT DETAIL.

GLASS SHOWN DOES NOT NECESSARILY REPRESENT FINAL CONFIGURATION.
 CONSULT GLASS MANUFACTURER FOR SPECIFIC GLASS MAKE UP.

USE OF SSG VERTICALS WITH THESE GLAZING OPTIONS REQUIRE 1/4" SILICONE JOINT THICKNESS FOR
 OPTIMUM STRUCTURAL SILICONE PERFORMANCE. CONSULT TUBELITE ENGINEERING FOR ANY CUSTOM
 CONFIGURATIONS REQUIRED.

SPLICE AND ANCHOR
 DETAILS



Last Revised: 03/13/23

SCALE: 1" = 3/8"