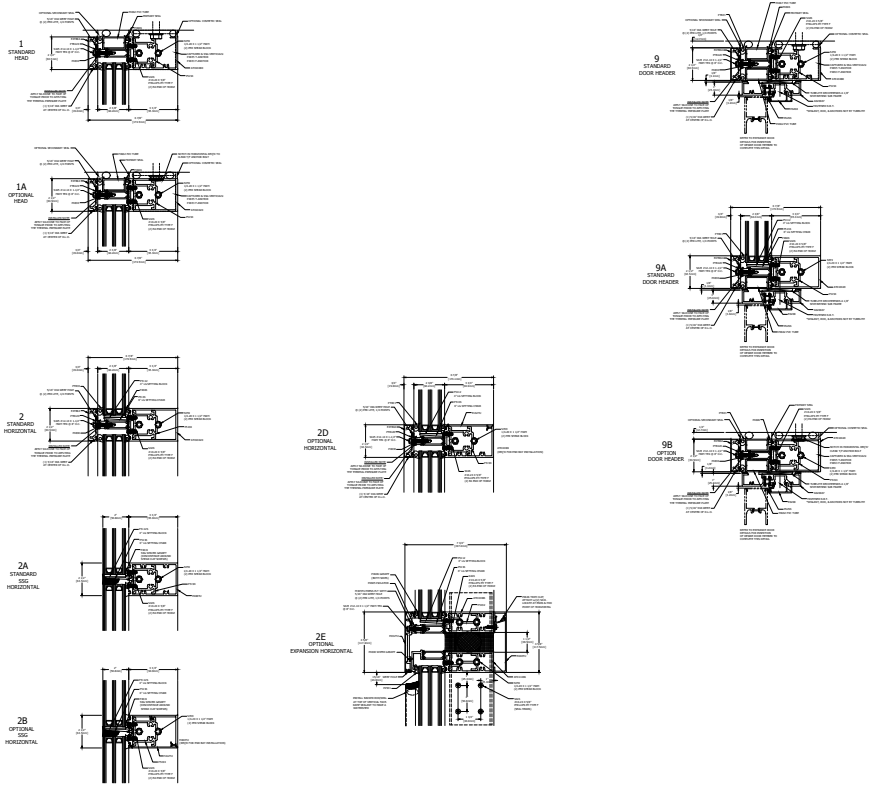


TYPICAL ELEVATION

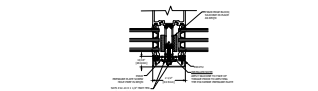
400TU ULTRA THERMAL CURTAIN WALL  
 3 3/4" BACK MEMBER, TRIPLE GLAZE, SHEAR CLIP  
 THERMAL PRESSURE PLATE



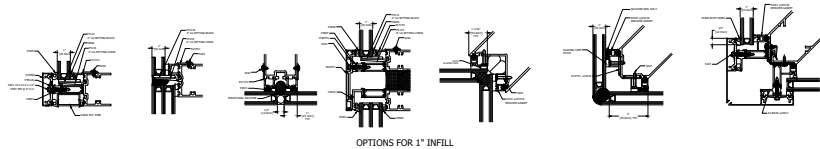
HORIZONTAL DETAILS



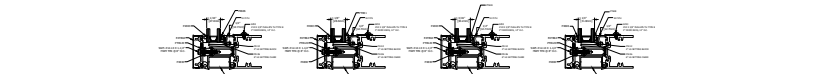
FACE COVER PINNING



POLYAMIDE PRESSURE PLATE

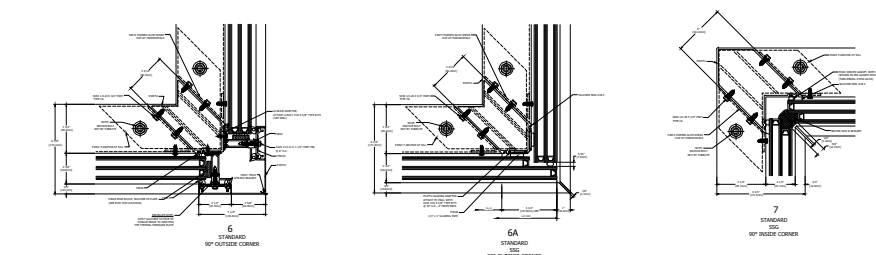
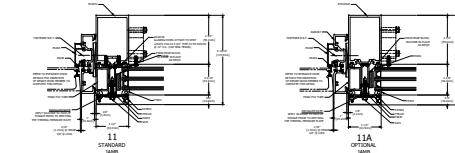
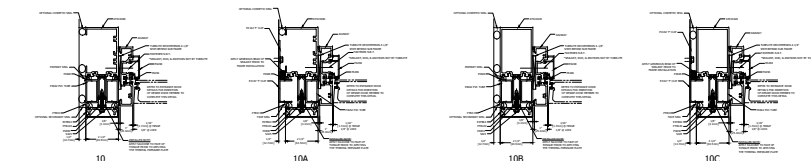
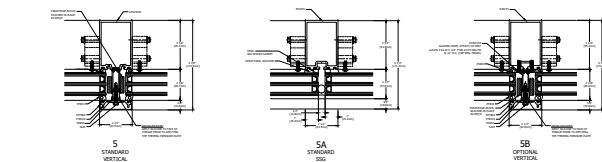
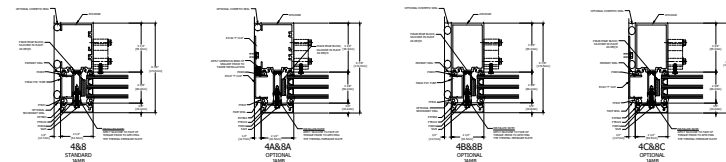


OPTIONS FOR 1" INFILL



GLAZING INFILL OPTIONS

GLASS SHOWN DOES NOT NECESSARILY REPRESENT FINAL CONFIGURATION.  
 CONSULT GLASS MANUFACTURER FOR SPECIFIC GLASS MAKE UP.  
 USE OF SOG VERTICALS WITH THESE GLAZING OPTIONS REQUIRE 1/4" SILICONE JOINT THICKNESS FOR  
 OPTIMUM STRUCTURAL SILICONE PERFORMANCE. CONSULT TUBELITE ENGINEERING FOR ANY CUSTOM  
 CONFIGURATIONS REQUIRED.



VERTICAL DETAILS

SPLICE AND ANCHOR DETAILS

