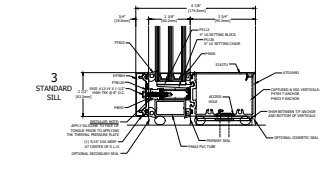
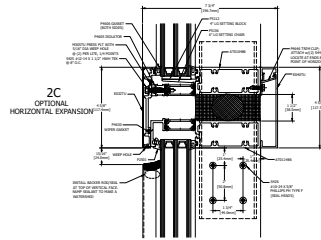
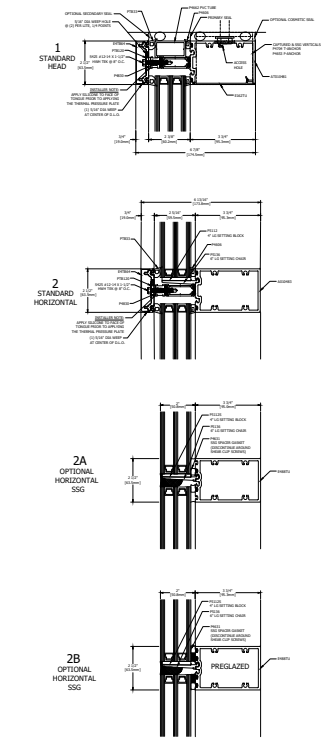
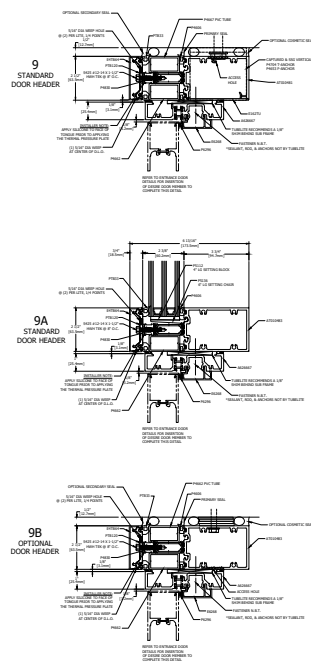


TYPICAL ELEVATION

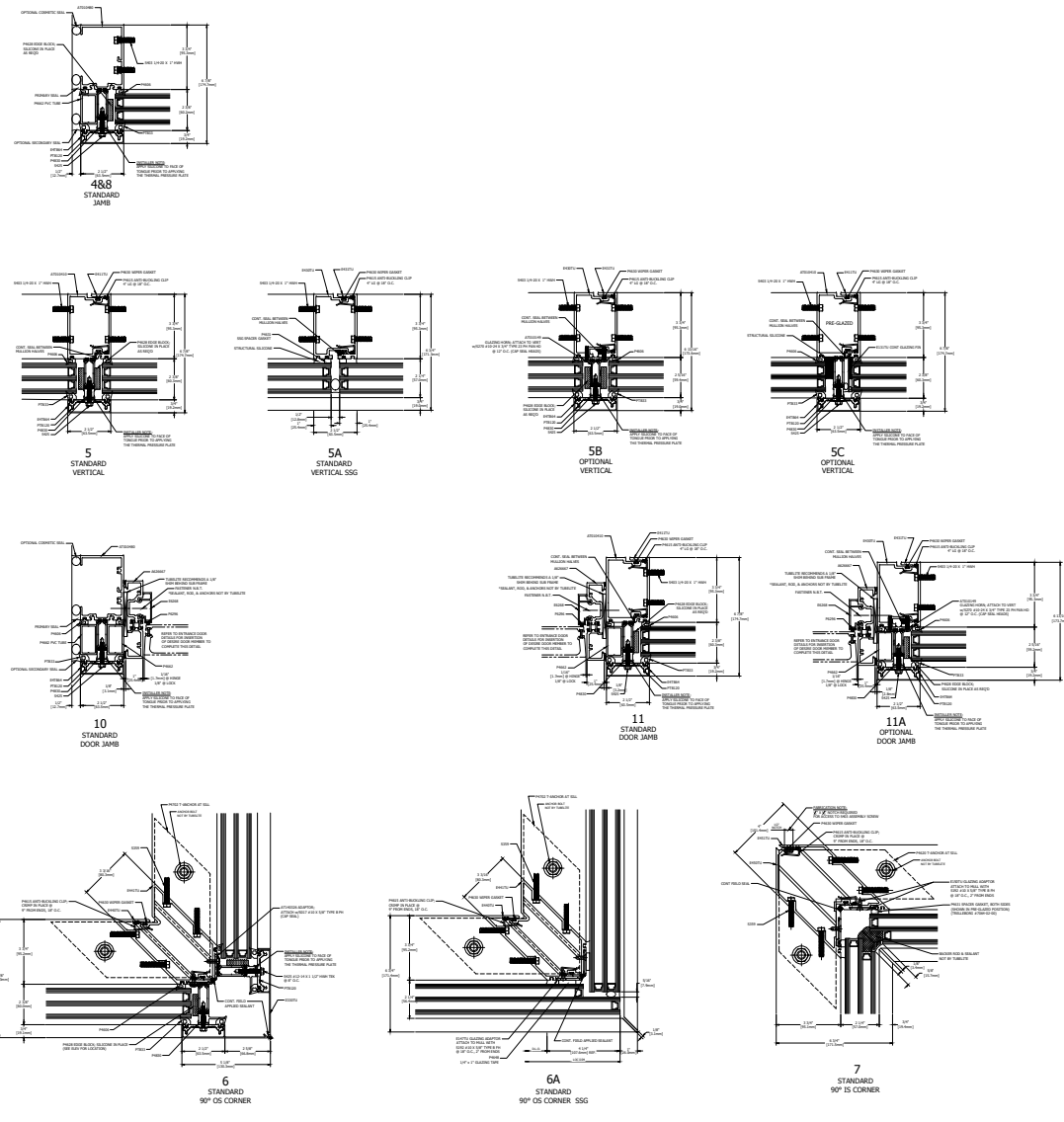
400TU ULTRA THERMAL CURTAIN WALL  
 3 3/4" BACK MEMBER, TRIPLE GLAZE, SCREW SPLINE  
 THERMAL PRESSURE PLATE



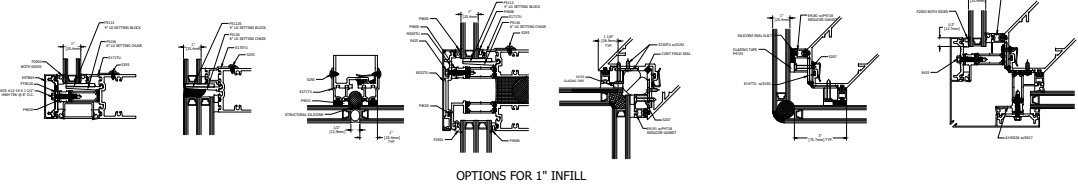
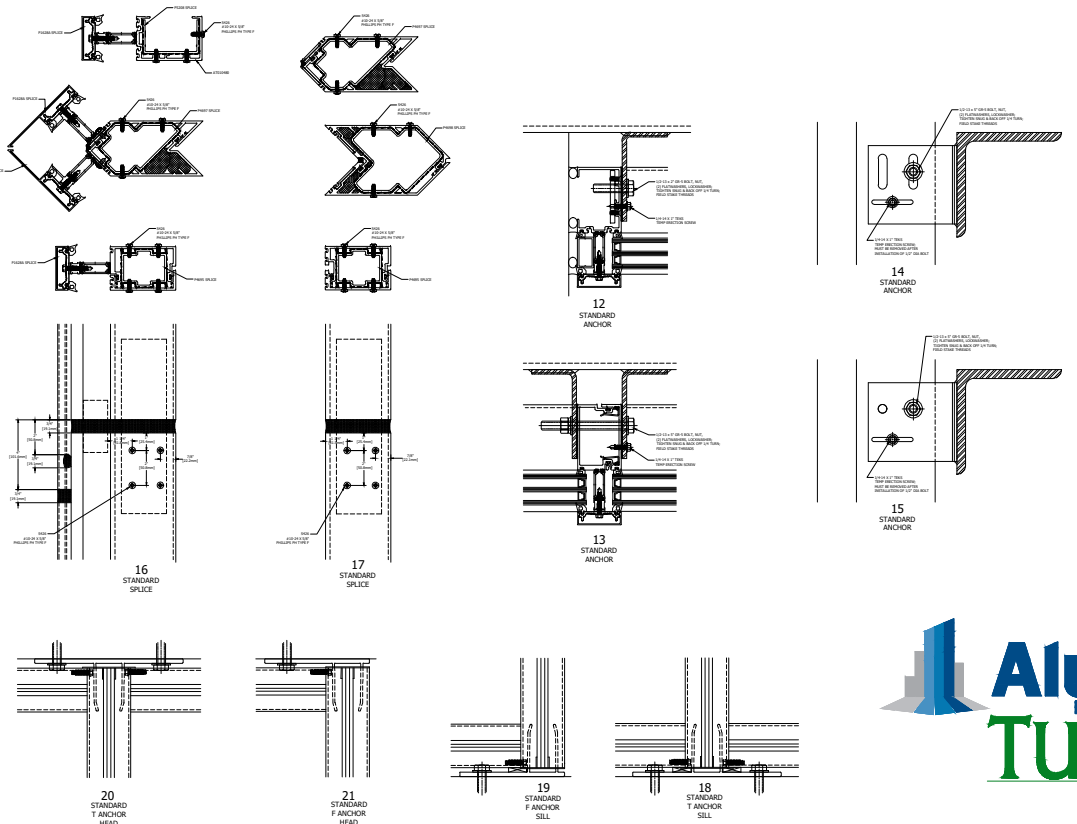
HORIZONTAL DETAILS



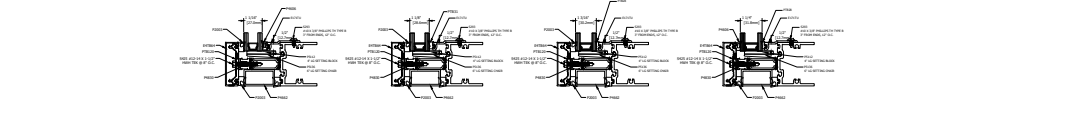
VERTICAL DETAILS



SPLICE AND ANCHOR DETAILS



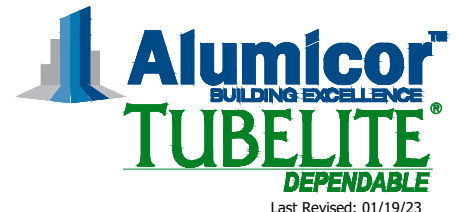
OPTIONS FOR 1" INFILL



GLAZING INFILL OPTIONS

GLASS SHOWN DOES NOT NECESSARILY REPRESENT FINAL CONFIGURATION.  
 CONSULT GLASS MANUFACTURER FOR SPECIFIC GLASS MAKE UP.

USE OF SSG VERTICALS WITH THESE GLAZING OPTIONS REQUIRE 1/4" SILICONE JOINT THICKNESS FOR OPTIMUM STRUCTURAL SILICONE PERFORMANCE. CONSULT TUBELITE ENGINEERING FOR ANY CUSTOM CONFIGURATIONS REQUIRED.



Last Revised: 01/19/23