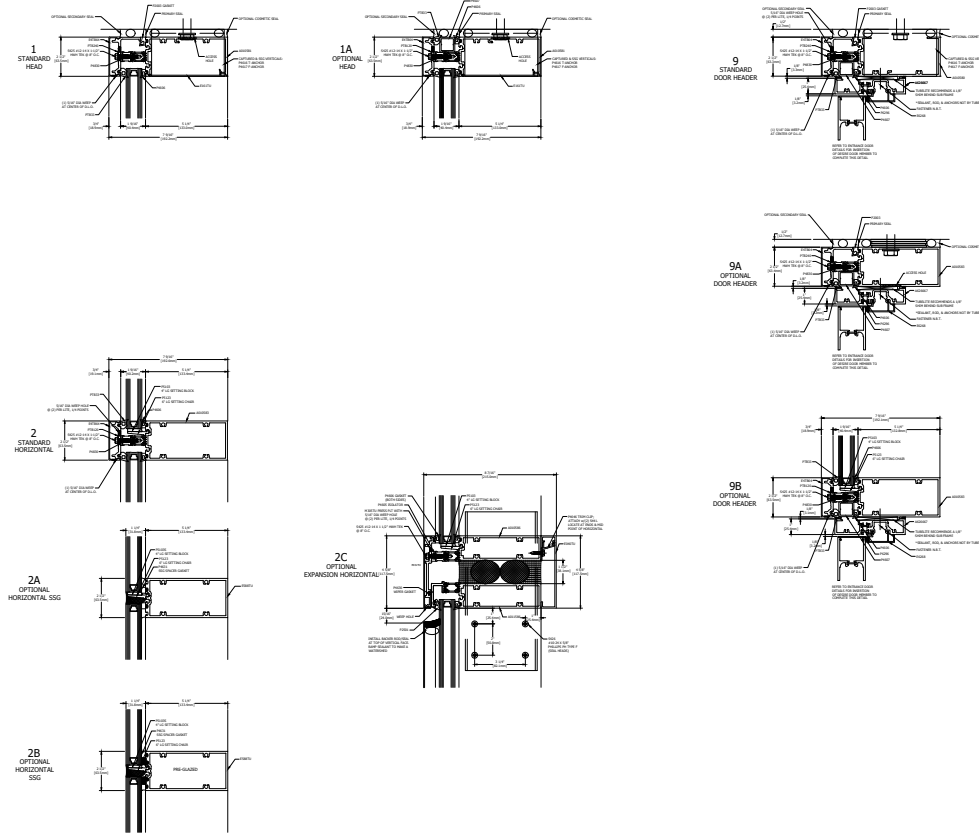
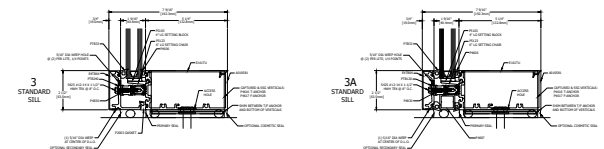
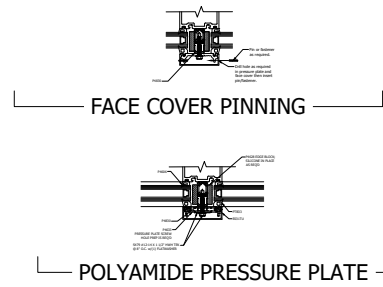
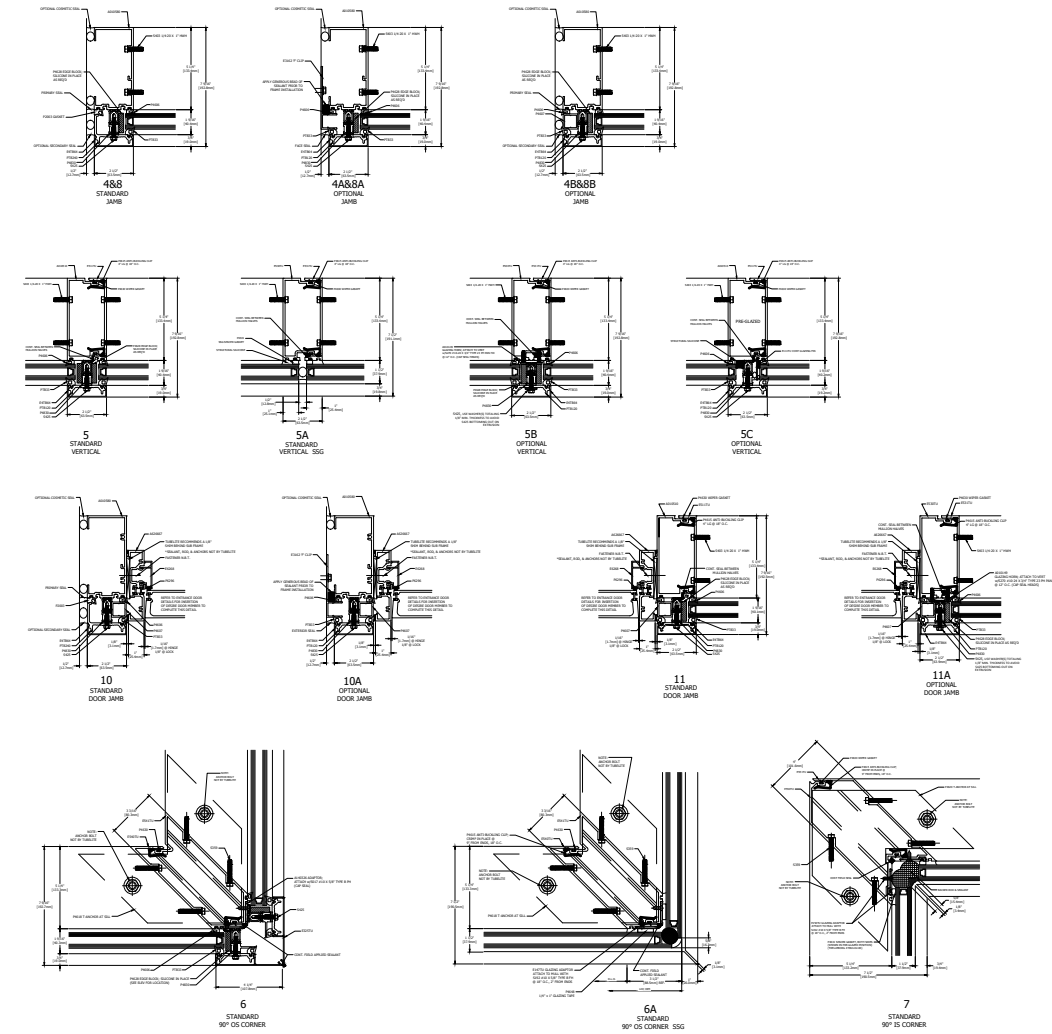


TYPICAL ELEVATION

400TU ULTRA THERMAL CURTAIN WALL
 5 1/4" BACK MEMBER, DUAL GLAZE, SCREW SPLNE
 ALUMINUM PRESSURE PLATE

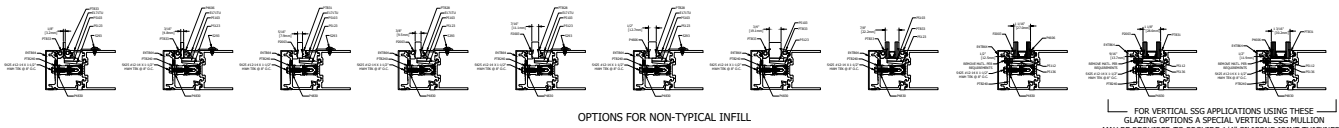
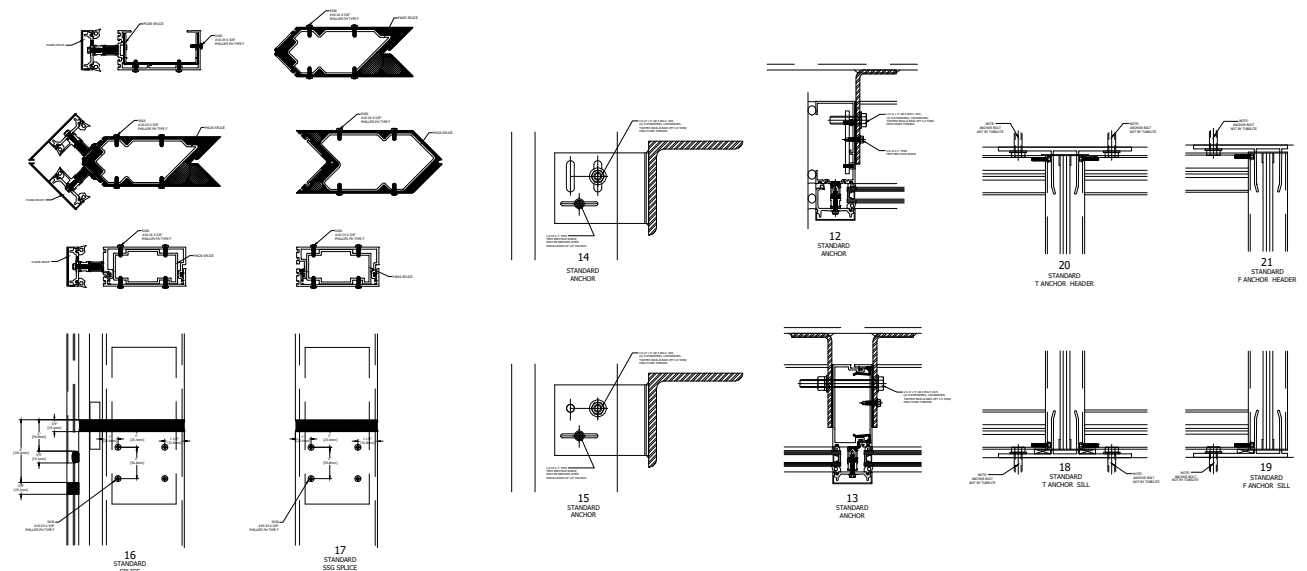


VERTICAL DETAILS



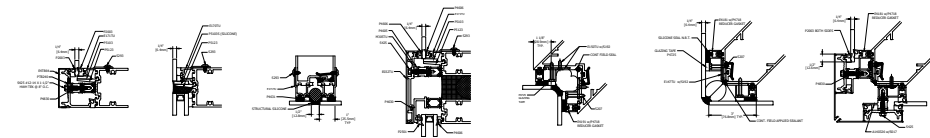
HORIZONTAL DETAILS

SPLICE AND ANCHOR DETAILS



OPTIONS FOR NON-TYPICAL INFILL

FOR VERTICAL SSG APPLICATIONS USING THESE GLAZING OPTIONS A SPECIAL VERTICAL SSG MULLION MAY BE REQUIRED TO PROVIDE 1/4" SILICONE JOINT THICKNESS. CONSULT TUBELITE ENGINEERING.



OPTIONS FOR 1/4" INFILL

GLAZING INFILL OPTIONS

NOTE: TYPICAL GLASS BITE 1/2" FROM DLO UNLESS NOTED AT DETAIL.

GLASS SHOWN DOES NOT NECESSARILY REPRESENT FINAL CONFIGURATION. CONSULT GLASS MANUFACTURER FOR SPECIFIC GLASS MAKE UP.
 USE OF SSG VERTICALS WITH THESE GLAZING OPTIONS REQUIRE 1/4" SILICONE JOINT THICKNESS FOR OPTIMUM STRUCTURAL SILICONE PERFORMANCE. CONSULT TUBELITE ENGINEERING FOR ANY CUSTOM CONFIGURATIONS REQUIRED.