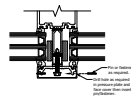
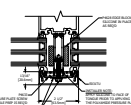


TYPICAL ELEVATION

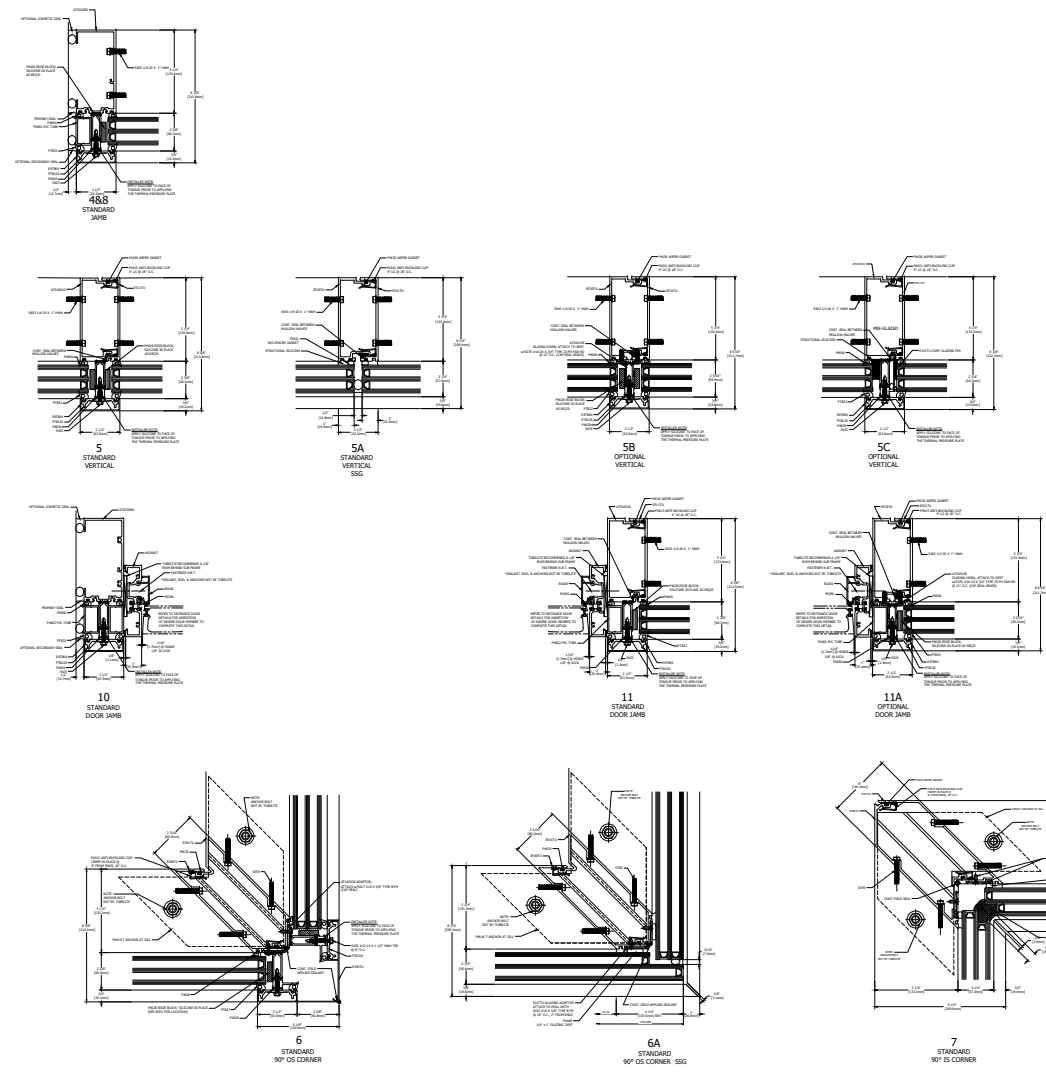
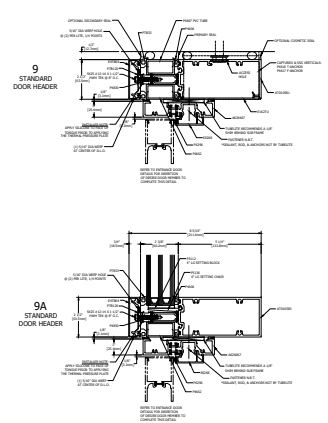
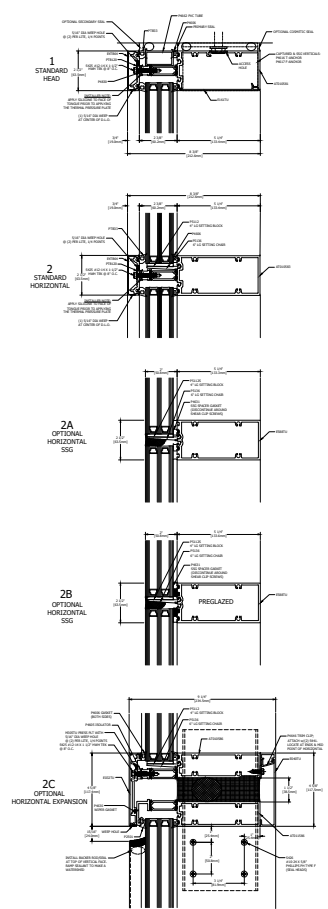
400TU ULTRA THERMAL CURTAIN WALL
 5 1/4" BACK MEMBER, TRIPLE GLAZE, SCREW SPLNE
 THERMAL PRESSURE PLATE



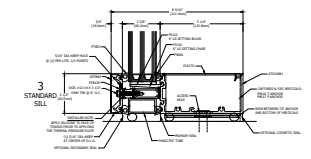
FACE COVER PINNING



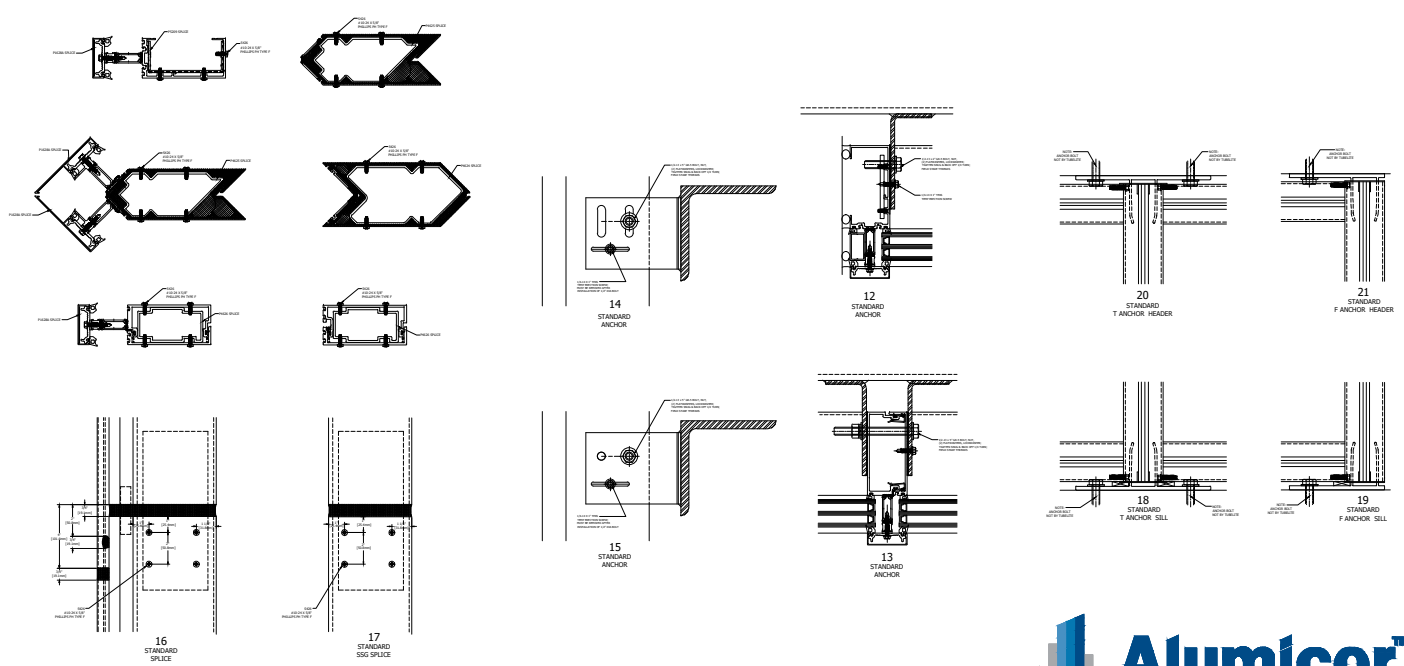
POLYAMIDE PRESSURE PLATE



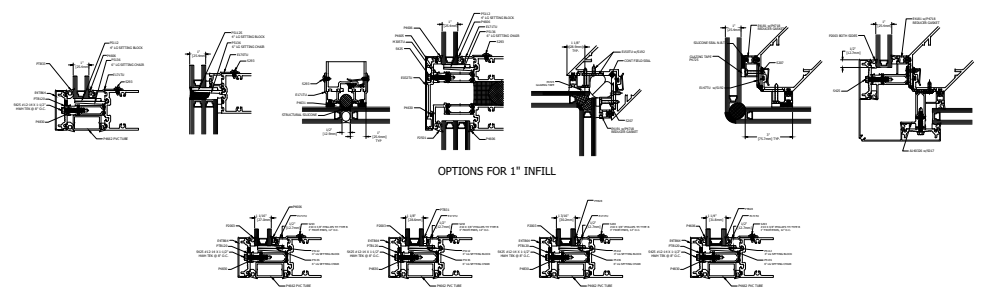
VERTICAL DETAILS



HORIZONTAL DETAILS



SPLICE AND ANCHOR DETAILS



GLAZING INFILL OPTIONS

GLASS SHOWN DOES NOT NECESSARILY REPRESENT FINAL CONFIGURATION.
 CONSULT GLASS MANUFACTURER FOR SPECIFIC GLASS MAKE UP.
 USE OF SSG VERTICALS WITH THESE GLAZING OPTIONS REQUIRE 1/4" SILICONE JOINT THICKNESS FOR
 OPTIMUM STRUCTURAL SILICONE PERFORMANCE. CONSULT TUBELITE ENGINEERING FOR ANY CUSTOM
 CONFIGURATIONS REQUIRED.



LAST REVISED: 01/19/2023