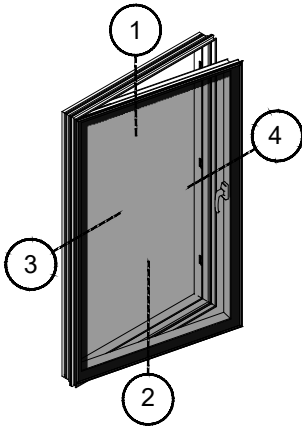


CASEMENT INFORMATION



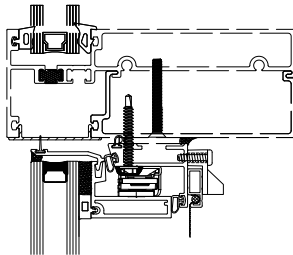
	MPL HANDLE <i>(LHR ONLY)</i>	ROTO + CLAW
<b>*MIN DIMENSIONS</b>	16" x 24" [406 x 610]	21 1/2" x 33" [546 x 838]
<b>*MAX DIMENSIONS</b>	36" x 60" [914 x 1524]	36" x 60" [914 x 1524]
<b>SCREEN</b>	OPT. (wicket)	OPTION
<b>MAX OPENING</b>	VARIABLE	VARIABLE
<b>LIMITED OPENING</b>	OPTION @ 4" [102]	OPTION @ 4" [102]

\*Based on (DLO) dimensions  
 [ ] Dimensions in brackets are in [mm] millimeters

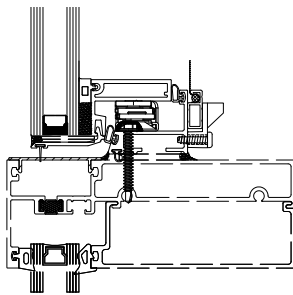
Window Wall Integration

*(shown with MPL Handle)*

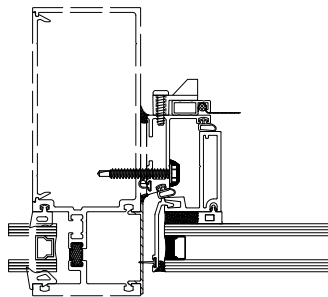
1



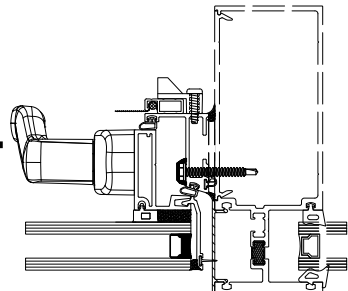
2



3

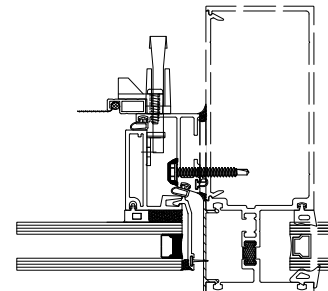
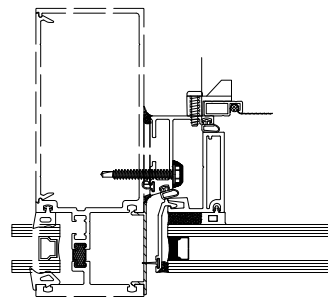
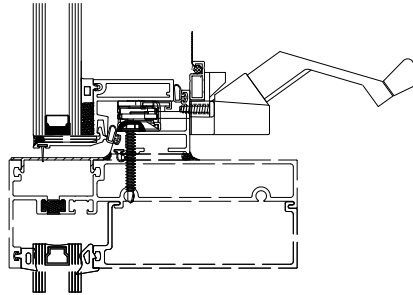
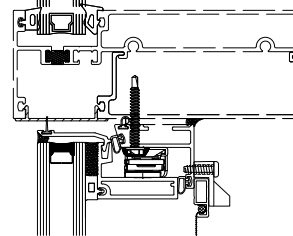


4



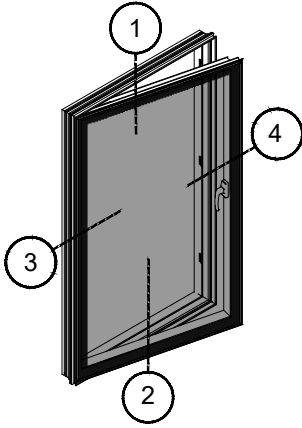
Window Wall Integration

*(shown with ROTO & CLAW)*



Standard Details  
 1/4 scale

CASEMENT INFORMATION

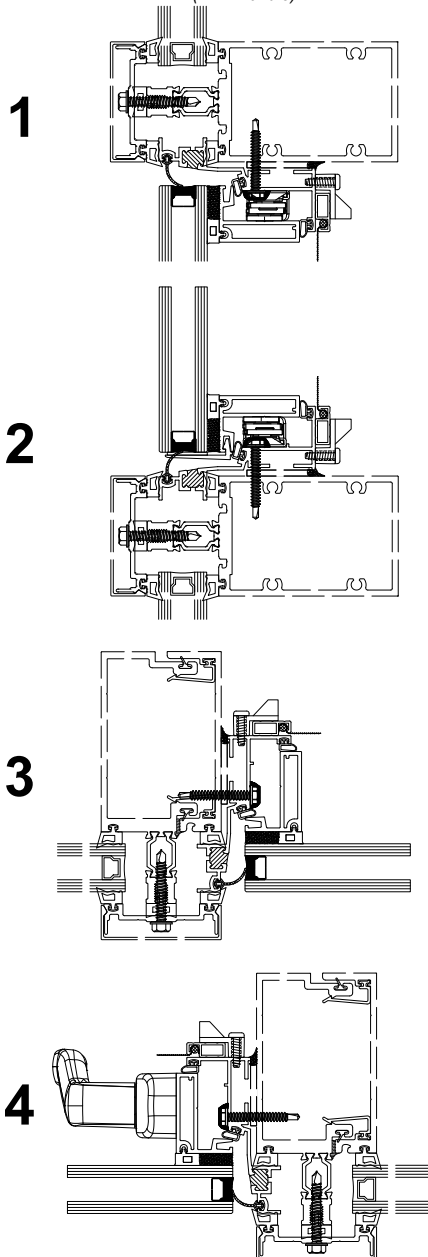


	MPL HANDLE <i>(LHR ONLY)</i>	ROTO + CLAW
*MIN DIMENSIONS	16" x 24" [406 x 610]	21 1/2" x 33" [546 x 838]
*MAX DIMENSIONS	36" x 60" [914 x 1524]	36" x 60" [914 x 1524]
SCREEN	OPT. (wicket)	OPTION
MAX OPENING	VARIABLE	VARIABLE
LIMITED OPENING	OPTION @ 4" [102]	OPTION @ 4" [102]

\*Based on (DLO) dimensions  
 [ ] Dimensions in brackets are in [mm] millimeters

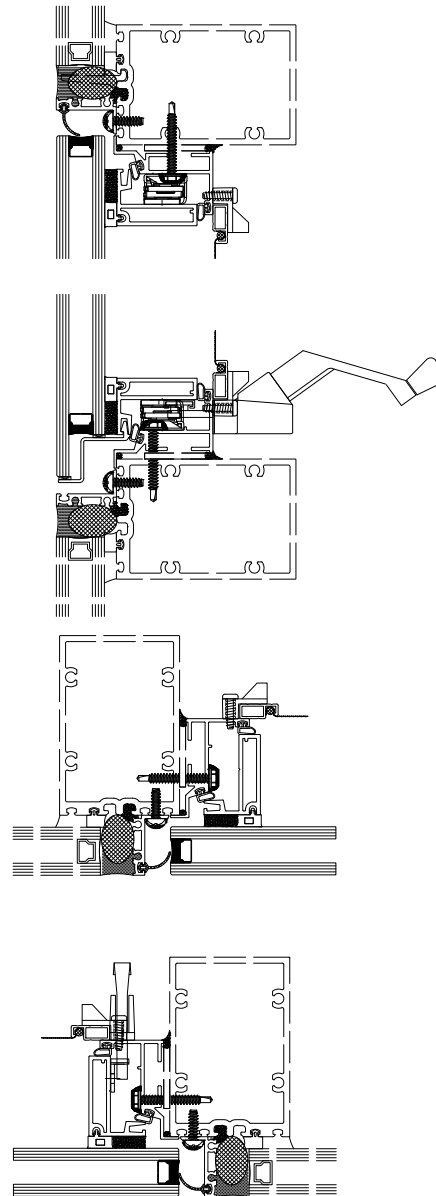
**Curtain Wall  
 Captured Integration**

*(MPL Handle)*



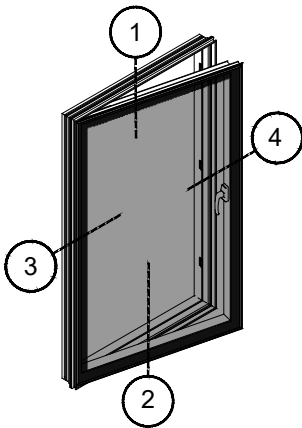
**Window Wall  
 SSG Integration**

*(shown with ROTO + CLAW)*



Standard Details  
 1/4 scale

**CASEMENT INFORMATION**



	MPL HANDLE <i>(LHR ONLY)</i>	ROTO + CLAW
<b>*MIN DIMENSIONS</b>	16" x 24" [406 x 610]	21 1/2" x 33" [546 x 838]
<b>*MAX DIMENSIONS</b>	36" x 60" [914 x 1524]	36" x 60" [914 x 1524]
<b>SCREEN</b>	OPT. (wicket)	OPTION
<b>MAX OPENING</b>	VARIABLE	VARIABLE
<b>LIMITED OPENING</b>	OPTION @ 4" [102]	OPTION @ 4" [102]

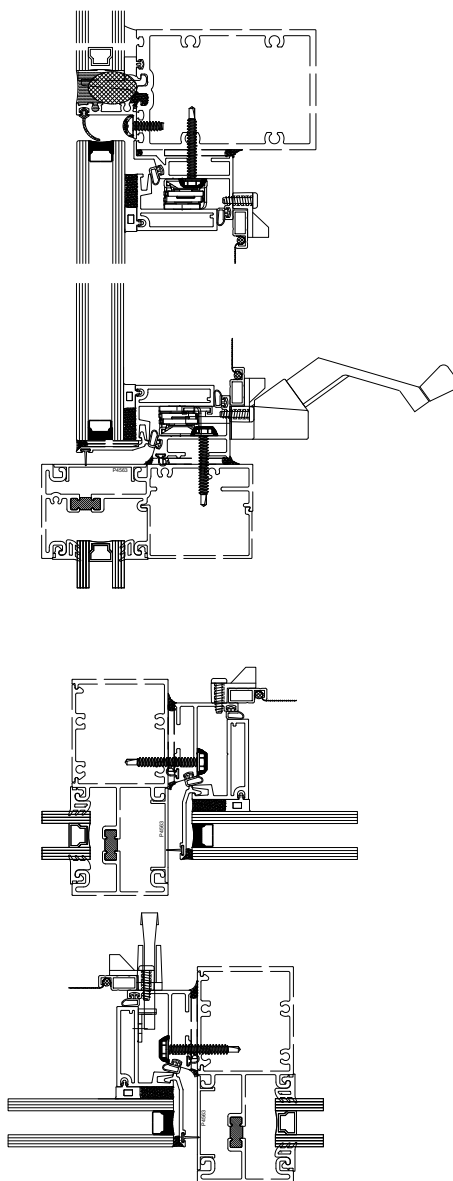
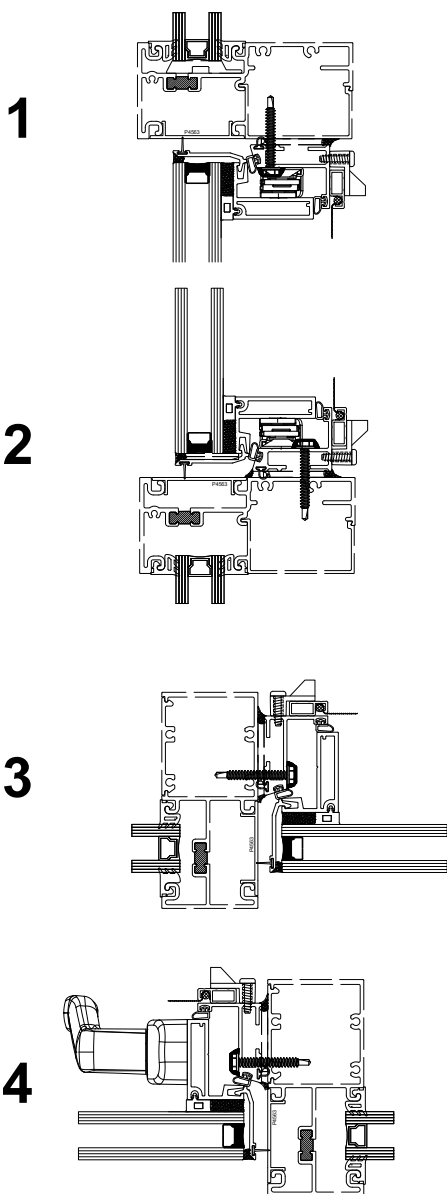
\*Based on (DLO) dimensions  
 [ ] Dimensions in brackets are in [mm] millimeters

**Storefront Integration**

*(shown with MPL Handle)*

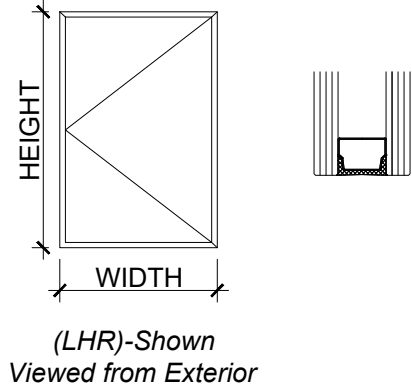
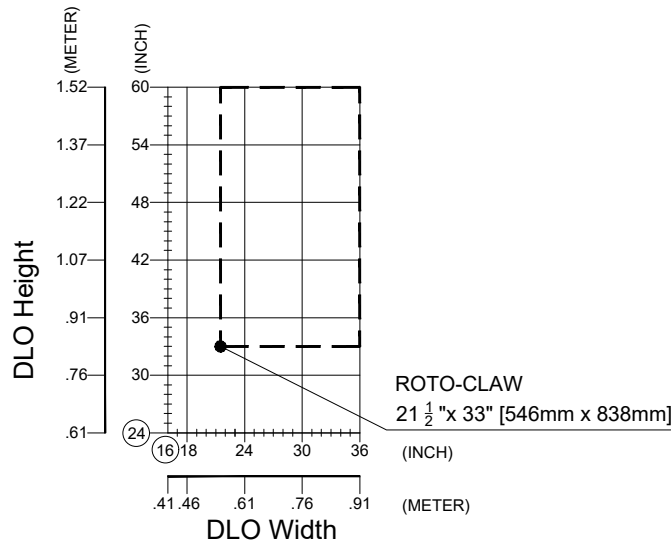
**Storefront Integration**

*(shown with ROTO + CLAW)*



Standard Details  
 1/4 scale

**SIDE HUNG PROJECT OUT WITH ROTO OPERATOR & CLAW HANDLE  
OR MPL HANDLE**



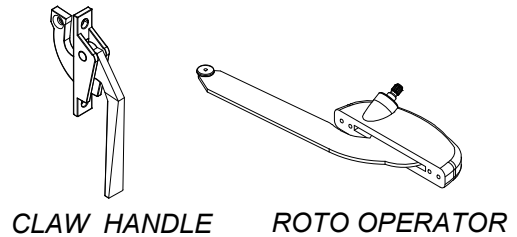
Charts are based upon an insulating glass unit infill of 1" [25.4mm] overall thickness comprised of 6mm glass/13mm gas fill/6mm glass

Using this chart:

- Ensure your largest maximum casement size falls within the above size limitation chart

ROTO & CLAW HANDLE hardware includes the following:

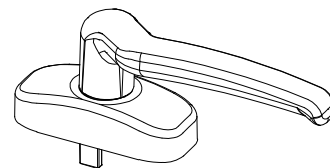
- Minimum size 21 1/2" [546] x 33" [838]
- Silver, White or Black hardware finish
- One ROTO Operator
- Two CLAW locking connected with tie bar
- One pair stainless steel friction arms
- Snubber set (as required)
- Glass surrounds (as required)



(LHR) LEFT HAND ONLY

MPL HANDLE hardware includes the following:

- Minimum size 16" [406] x 24" [406]
- Silver, White or Black handle finish
- One multipoint locking handle centered on the sill of the sash
- One pair stainless steel friction arms
- Snubber set (as required)
- Glass surrounds (as required)



Optional extras (must be specified at time of ordering or quotation):

- Insect screen (fiberglass or aluminum mesh)
- Sash limiters
- Hardware other than standard

Standard Details  
1/4 scale