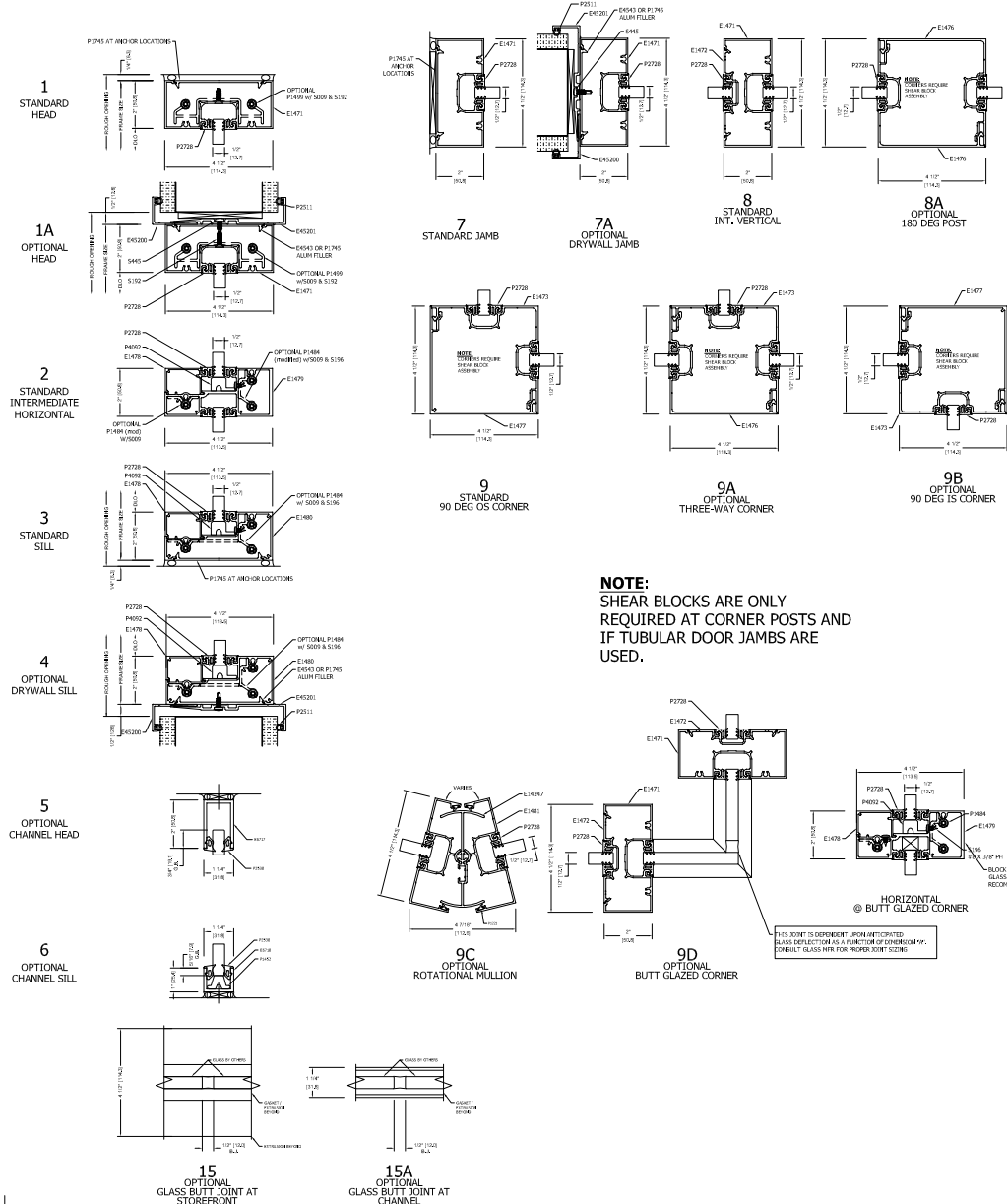


TYPICAL ELEVATION

INT14 2" x 4-1/2" INTERIOR FRAMING SYSTEM



NOTE: SHEAR BLOCKS ARE ONLY REQUIRED AT CORNER POSTS AND IF TUBULAR DOOR JAMBS ARE USED.

TYPICAL DETAILS

UNSUPPORTED SPAN FROM TOP TO BOTTOM OF GLASS	RECOMMENDED MINIMUM THICKNESS OF FULLY TEMPERED GLASS*
UP TO 5 FT	1/4"
OVER 5 FT UP TO 8 FT	3/8"
OVER 8 FT UP TO 10 FT	1/2"
OVER 10 FT UP TO 12 FT	5/8"
OVER 12 FT UP TO 14 FT	3/4"
OVER 14 FT UP TO 16 FT	INT14 WILL NOT ACCOMMODATE GLASS THICKNESS TO MEET THESE SPANS
OVER 16 FT UP TO 18 FT	
OVER 18 FT	NOT RECOMMENDED

PPG TECHNICAL DOCUMENT TD-114

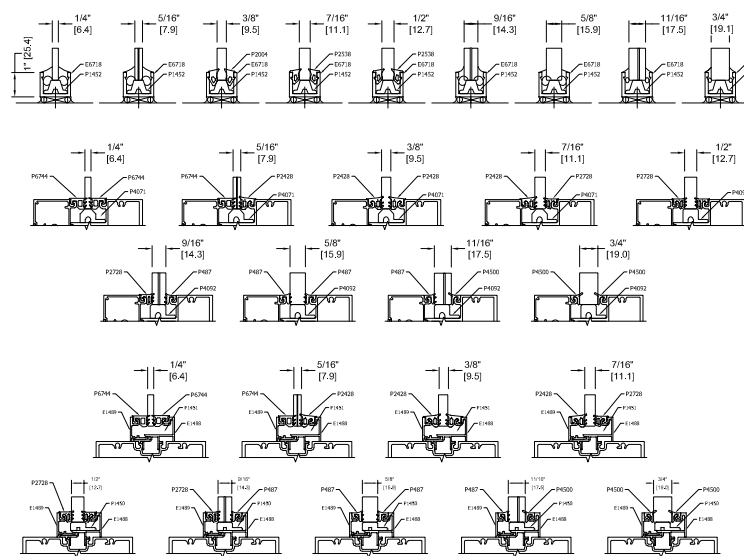
TABLE 1

NOTE: GLASS THICKNESS MUST BE SIZED ACCORDING TO THE LARGER OF TABLE 1 AND 2 VALUES.

DISTANCE FROM WALKING SURFACE TO BOTTOM EDGE OF GLASS	0"	6"	12"	18"	24"
7 FT	5/8"	5/8"	5/8"	1/2"	1/2"
8 FT	5/8"	5/8"	5/8"	5/8"	1/2"
9 FT	5/8"	5/8"	5/8"	5/8"	5/8"
10 FT	3/4"	3/4"	5/8"	5/8"	5/8"
11 FT	3/4"	3/4"	3/4"	5/8"	5/8"
12 FT	3/4"	3/4"	3/4"	3/4"	5/8"
13 FT	3/4"	3/4"	3/4"	3/4"	5/8"
14 FT	3/4"	3/4"	3/4"	3/4"	5/8"
15 FT	3/4"	3/4"	3/4"	3/4"	3/4"
16 FT	INT14 WILL NOT ACCOMMODATE GLASS THICKNESS TO MEET THESE SPANS.				
17 FT	CONSIDER E14000 SERIES STOREFRONT.				
18 FT	CONSIDER E14000 SERIES STOREFRONT.				

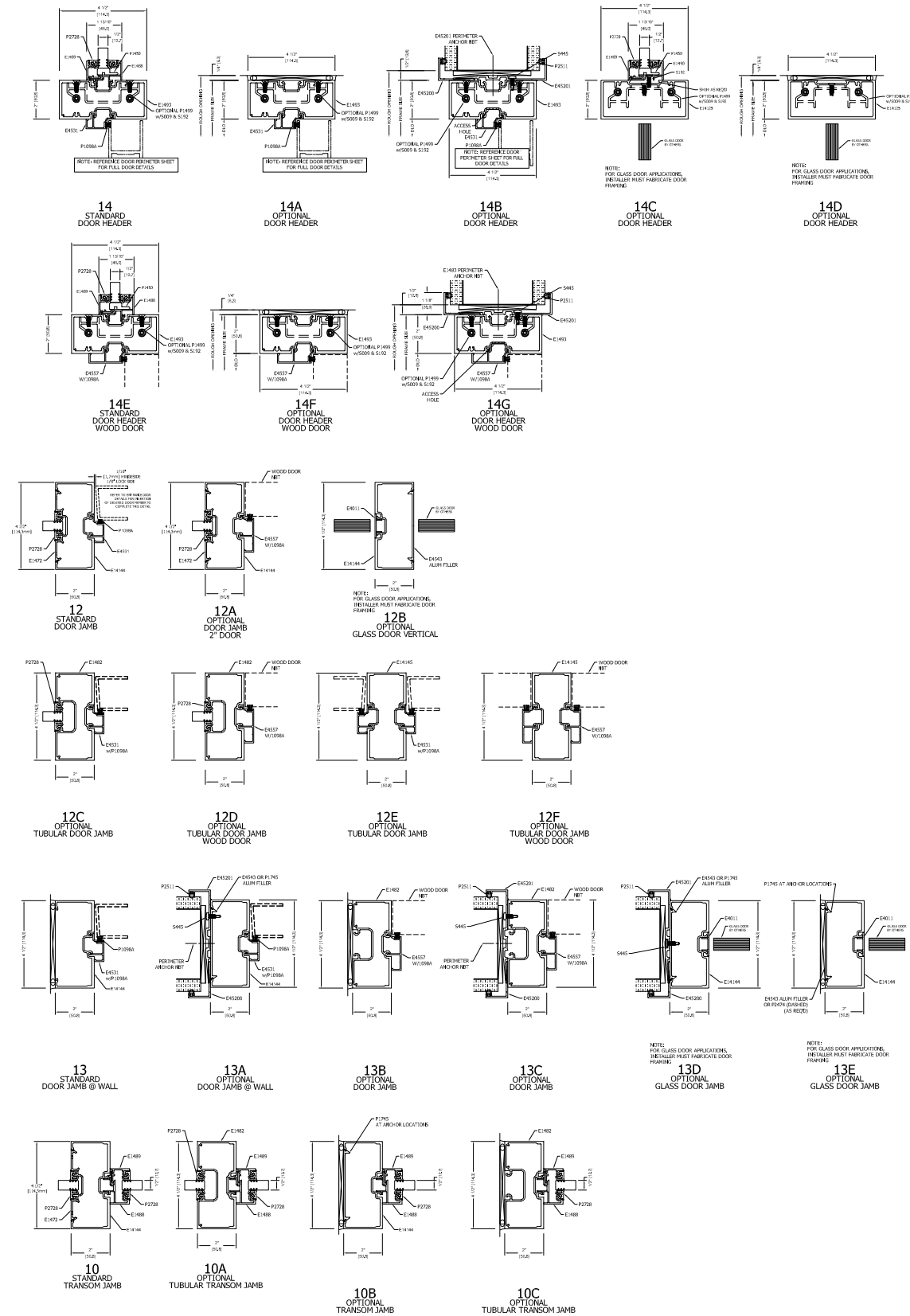
MINIMUM RECOMMENDED FULLY TEMPERED GLASS THICKNESS*
*BOCA Section 2402.3

TABLE 2



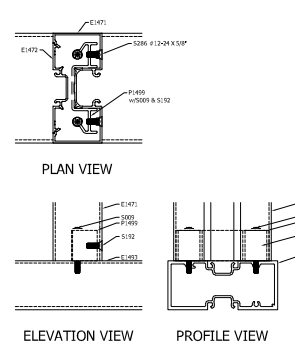
GLAZING INFILL OPTIONS

GLASS SHOWN DOES NOT NECESSARILY REPRESENT FINAL CONFIGURATION. CONSULT GLASS MANUFACTURER FOR SPECIFIC GLASS MAKE UP.



DOOR & TRANSOM DETAILS

ALTERNATE TRANSOM DETAIL



ISOMETRIC VIEW
11 OPTIONAL CRIPPLE HEADER



Last Revised: 6/30/2023