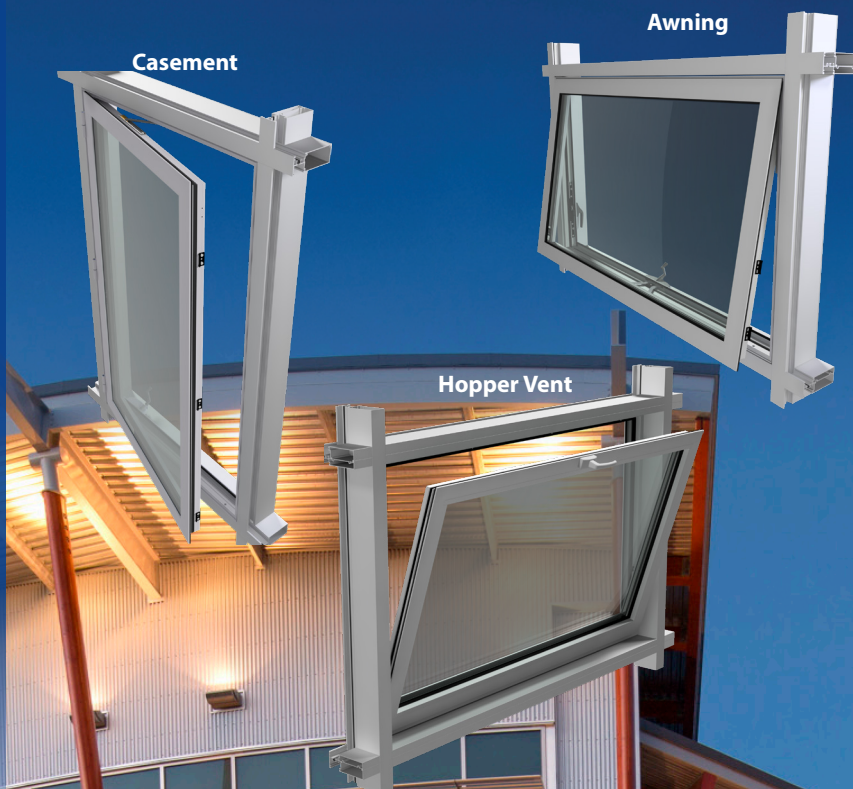


# UniVent 1350 Insert Vent

Let fresh air into the building using natural ventilation with Tubelite's new UniVent 1350 Series Windows. These operable windows are engineered to complement and seamlessly integrate within low- to mid-rise commercial buildings' storefront, curtainwall, and window wall systems.

UniVent 1350 Series Windows are tested to meet CW Architectural Performance Class, the most stringent performance and durability requirements of North American Fenestration Standard /Specification for windows, doors, and skylights (NAFS-08).

**ThermalBlock**  
HIGH PERFORMANCE THERMAL FRAMING



Casement

Awning

Hopper Vent



400TU  
Curtainwall

TU24000  
Storefront

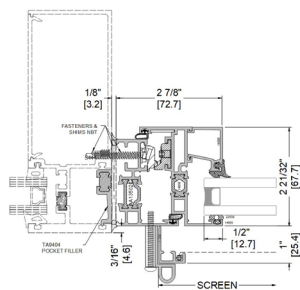
ALSO  
USED  
WITH

**TUBELITE**  
DEPENDABLE

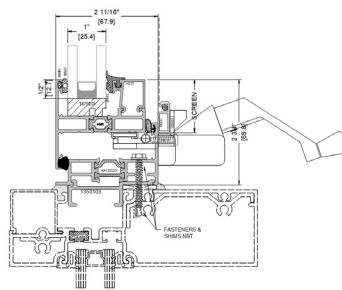
LEADERS IN ECO-EFFICIENT STOREFRONT,  
CURTAINWALL AND ENTRANCE SYSTEMS

# UniVent 1350 Insert Vent

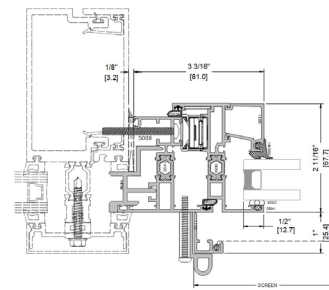
**ThermiBlock**  
HIGH PERFORMANCE THERMAL FRAMING



**Casement**



**Awning**



**Hopper**

## System Features:

- Integrates with storefront using a flush glaze adaptor.
- Adjustable hardware.
- Hardware is available in painted gray (silver) standard.
- Black or White painted hardware is optional (special order, extended lead time).
- Can be integrated in all Tubelite exterior storefront\* and curtainwall systems.
- \*Can create a thermal bridge if installed in thermal systems.
- Can be integrated in 900T/TU window wall systems.
- Open-in (Hopper & Casement) and Open-out (Awning & Casement) window options.
- Polyamide thermal break provides u-factor of 0.37 (Dual Glazed) and permits two-color interior/exterior finishes.
- 4-bar hinges design with cam handles and Roto-MPL options.
- Optional screens available in fiberglass or aluminum (wickets available with cam option).
- Factory-fabricated only for 2-year standard warranty (can be extended to 5-year).

UniVent 1350 Insert Vent	Awning	Casement	Hopper	Casement
<b>Application</b>	Project Out	Project Out	Project In	Project In
<b>Frame Joints</b>	45° mitered sash and frame corners. Sealed and crimped joinery			
<b>Window Joints</b>	45° mitered sash and frame corners. Sealed and crimped joinery			
<b>Glass Thickness</b>	1" [25.4mm], 1 1/16" [27mm], 1 3/4 [44.5mm]			
<b>Face Width</b>	2-9/16" (65.1mm) or 2-11/16" (67.6mm)	2-7/8" (73mm) or 3-3/16" (81.08mm)	2-7/8" (73mm) or 3-3/16" (81.08mm)	2-7/8" (73mm) or 3-3/16" (81.08mm)
<b>Frame Depth</b>	2-11/16" (67.6mm)	2-21/32" (67.47mm)	2-11/16" (67.6mm)	2-21/32" (67.47mm)
<b>Hardware</b>	Please see Installation Manuals for available hardware configuration offerings and finishes.			
<b>E547 Cyclic Water</b>	15 PSF			
<b>U-Factor**</b>	0.41	0.42	0.44	0.41
<b>Air Infiltration and Exfiltration</b>	0.005 cfm/ft <sup>2</sup> @ 1.57 PSF	0.008 cfm/ft <sup>2</sup> @ 1.57 PSF	Infil: 0.05 cfm/ft <sup>2</sup> @ 1.57 PSF Exfil: 0.04 cfm/ft <sup>2</sup> @ 1.57 PSF	0.05 cfm/ft <sup>2</sup> @ 1.57 PSF
<b>AAMA/WDMA/CSA 101 I.5.2/A440-08, NAFS Testing</b>	Class CW-PG70		Class CW-PG70	
<b>CRF (AAMA 1503-2010)</b>	62 CRFf, 73 CRFg	62 CRFf, 70 CRFg	58 CRFf, 72 CRFg	59 CRFf, 73 CRFg

\*\* U-Factor per NFRC 100. Refer to the U-Value table at: [www.tubeliteusa.com/products/operable-windows/](http://www.tubeliteusa.com/products/operable-windows/)

DISCLAIMER: Tubelite takes no responsibility for product selection or application, including, but not limited to, compliance with building codes, safety codes, laws, merchantability or fitness for a particular purpose; and further disclaims all liability for the use, in whole or in part, of this Technical Guide in preparation of project specifications and/or other documents. Technical Guides are subject to change at any time, without notice, and at Tubelite's sole discretion. ©2024 Tubelite

012524

**TUBELITE**<sup>®</sup>  
**DEPENDABLE**