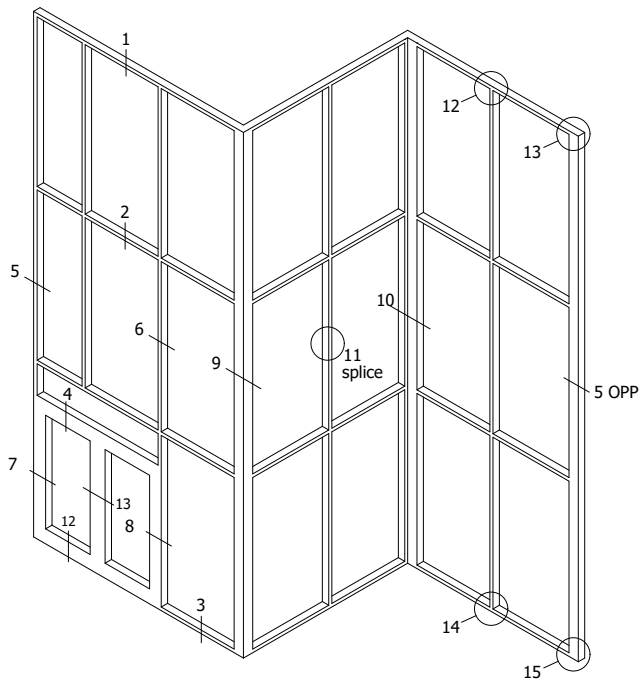
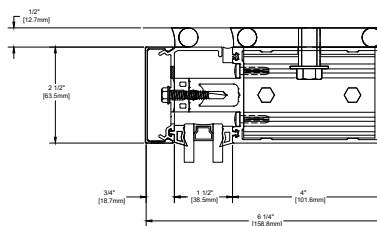


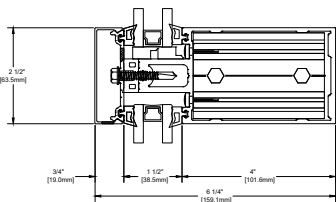
400T Alum. PP, 6.25" System Depth, 4" Back Member



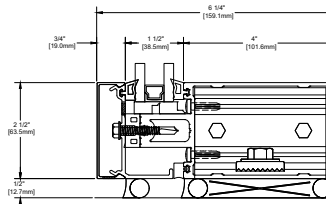
1
STANDARD
HEAD



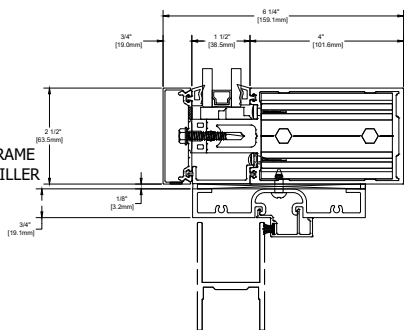
2
STANDARD
TUBULAR INTERMEDIATE
HORIZONTAL



1
STANDARD
TUBULAR SILL



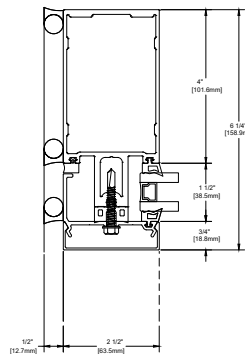
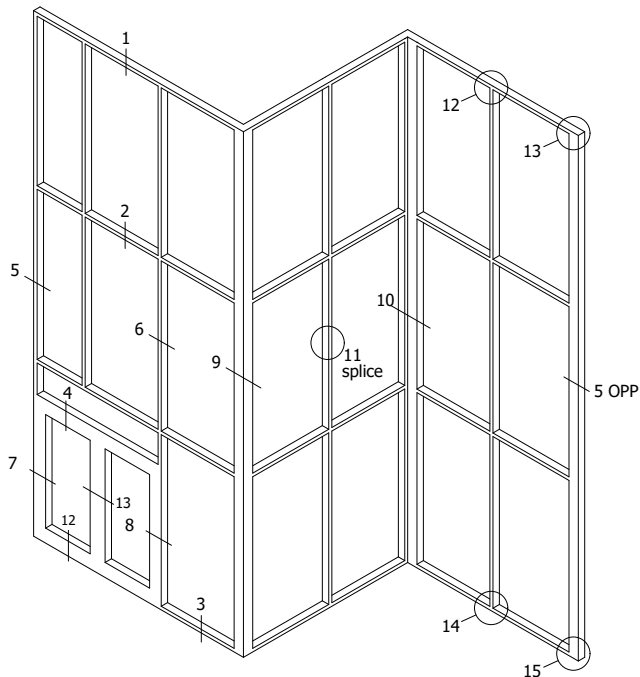
4
STANDARD
TRANSOM WITH SUB-FRAME
AND GLAZING POCKET FILLER



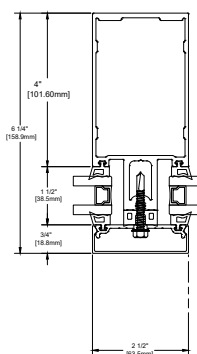
HORIZONTAL DETAILS

Standard Details
1/5 scale

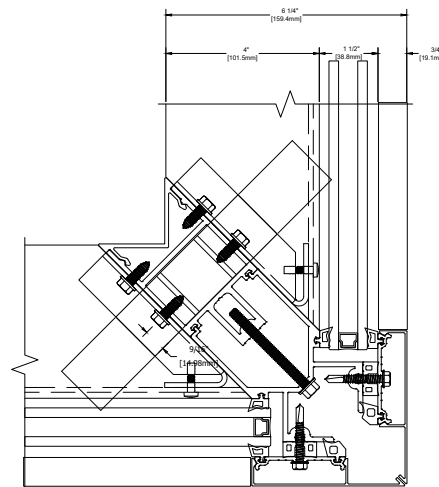
400T Alum. PP, 6.25" System Depth, 4" Back Member



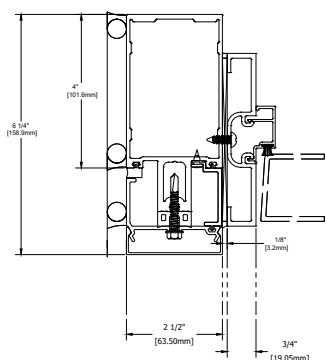
5
STANDARD
TUBULAR JAMB



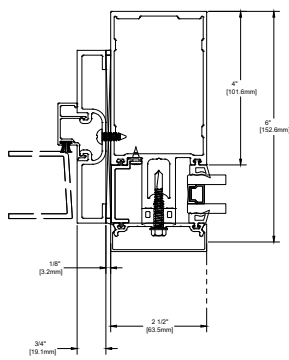
6
STANDARD
TUBULAR MULLION



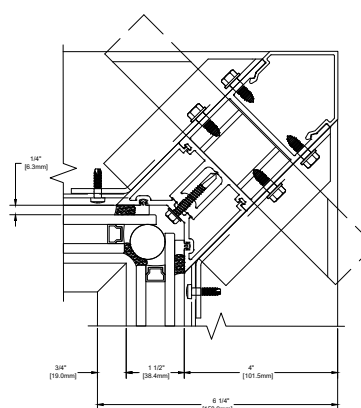
9
OPTIONAL
90° OUTSIDE CORNER



7
STANDARD
DOOR JAMB AT PERIMETER PRESSURE
PLATE W/ VINYL POCKET CLOSURE



8
STANDARD
DOOR JAMB W/ VINYL POCKET CLOSURE

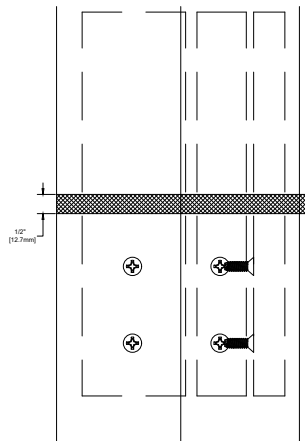
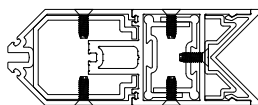
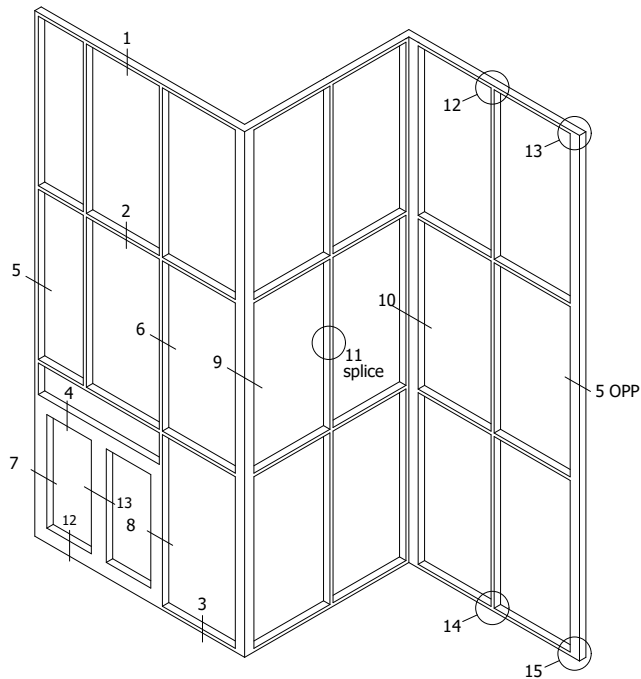


10
STANDARD
90° INSIDE SSG CORNER

VERTICAL DETAILS

Standard Details
1/5 scale

400T Alum. PP, 6.25" System Depth, 4" Back Member

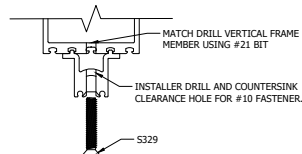
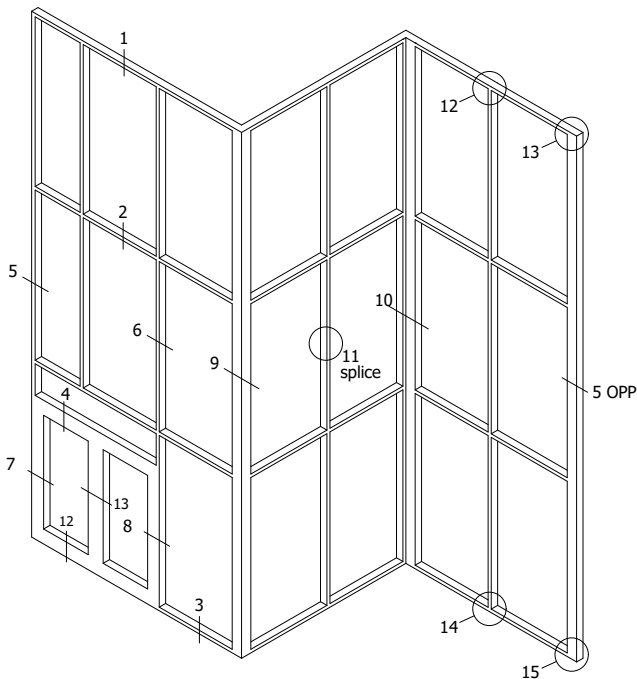


11C
STANDARD
SSG OUTSIDE
90° CORNER

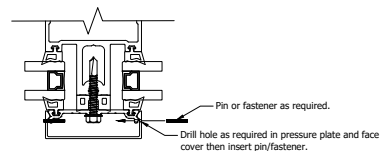
SPLICE DETAILS

Standard Details
1/5 scale

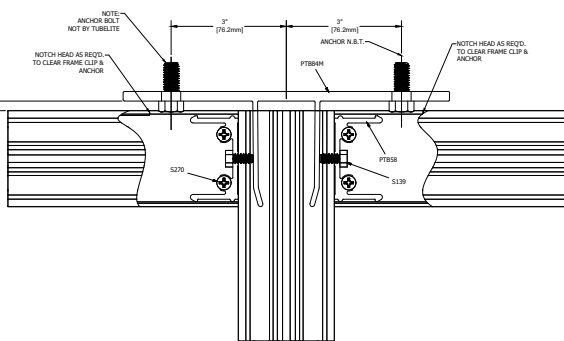
400T Alum. PP, 6.25" System Depth, 4" Back Member



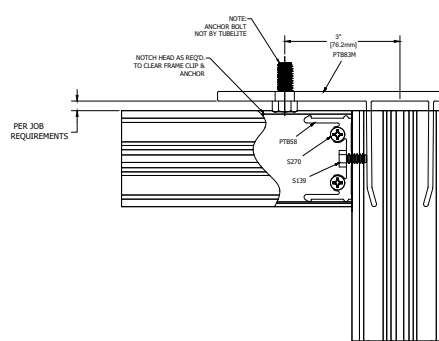
SCREW APPLIED HORN



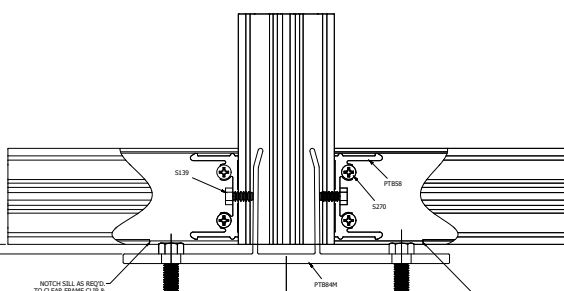
FACE COVER PINNING



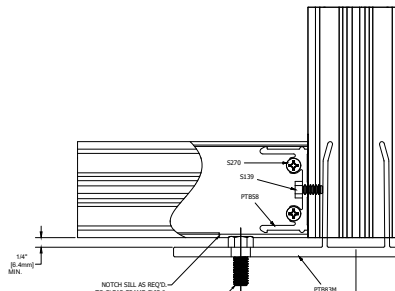
12
STANDARD
"T" ANCHOR AT HEAD



13
STANDARD
"F" ANCHOR AT HEAD



ANCHOR DETAILS



Standard Details
1/5 scale