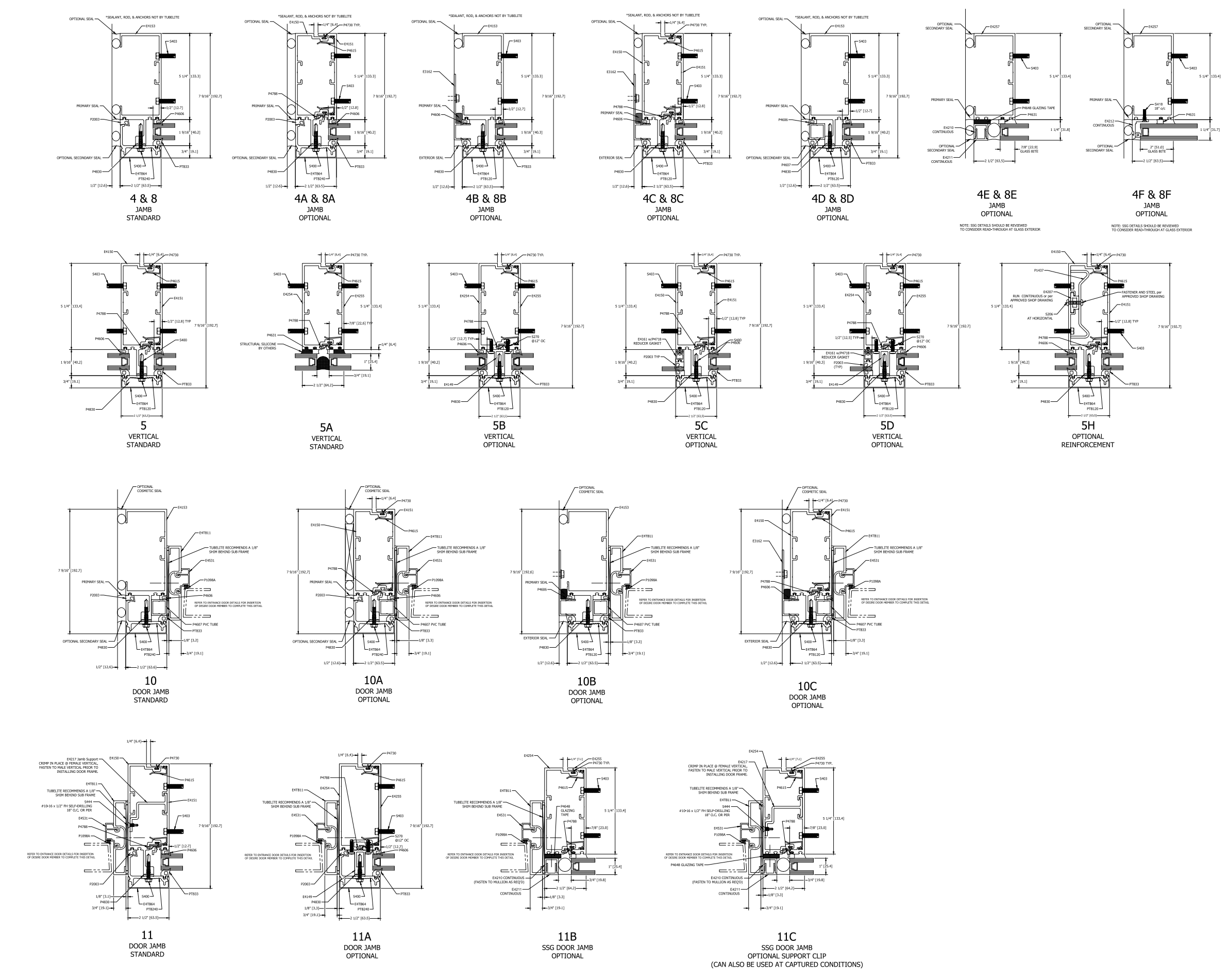
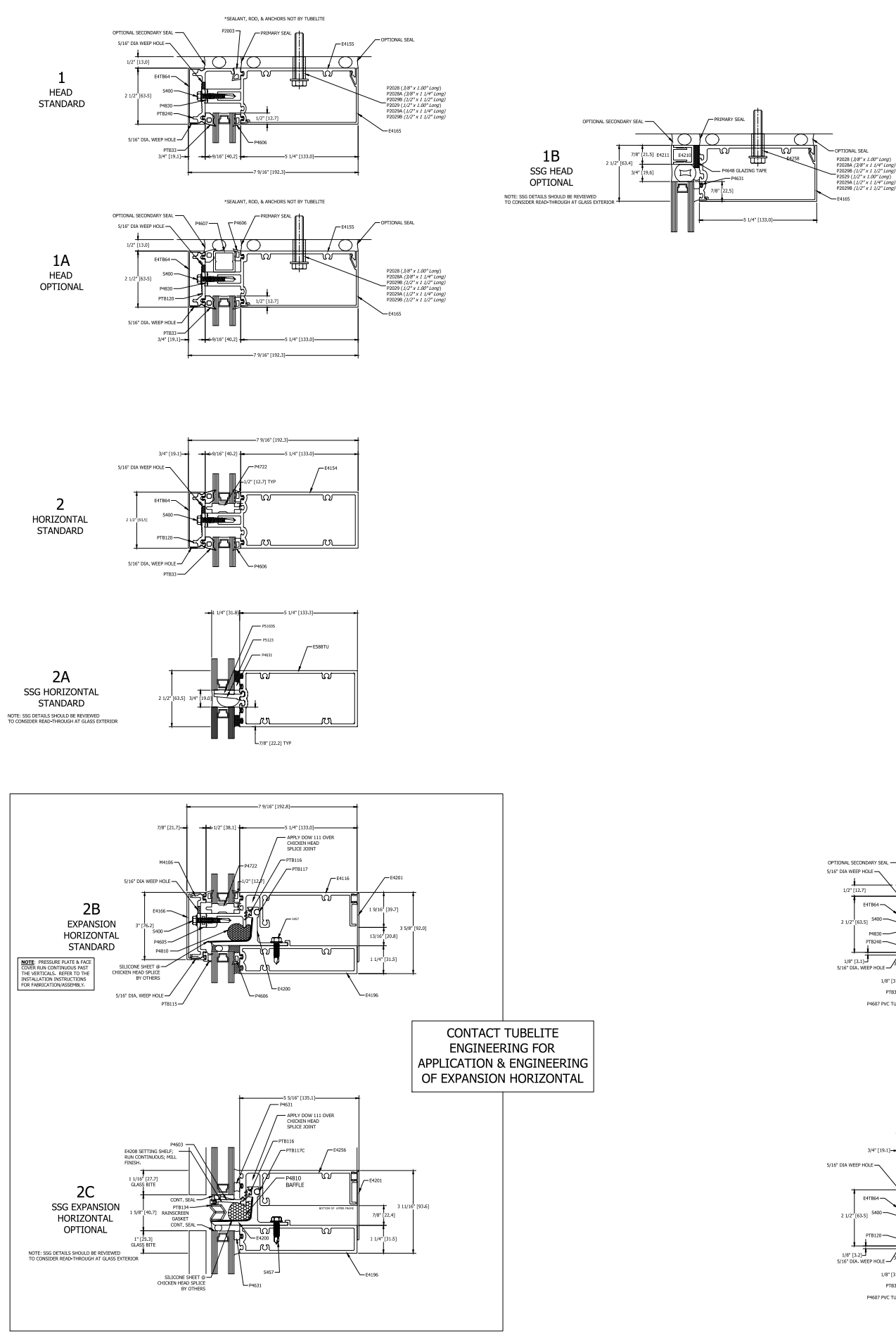
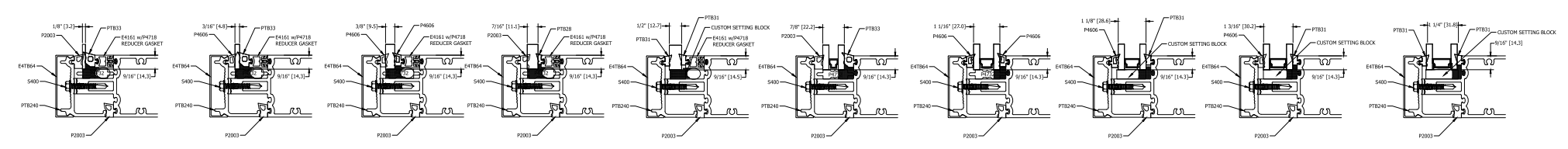
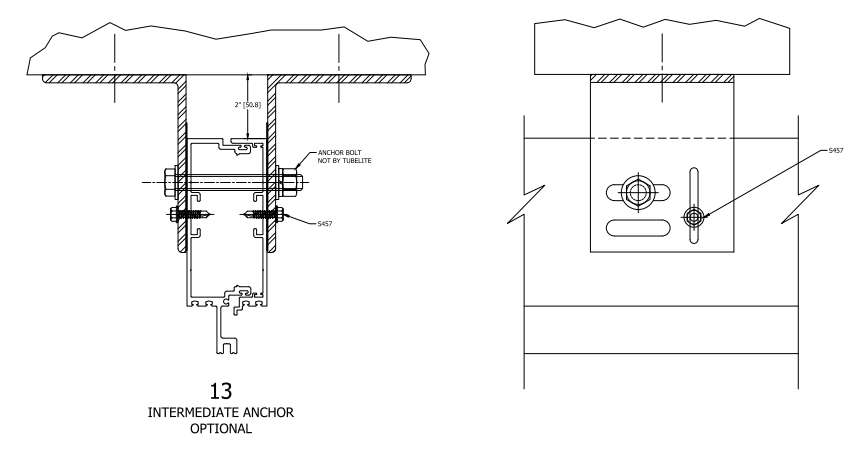
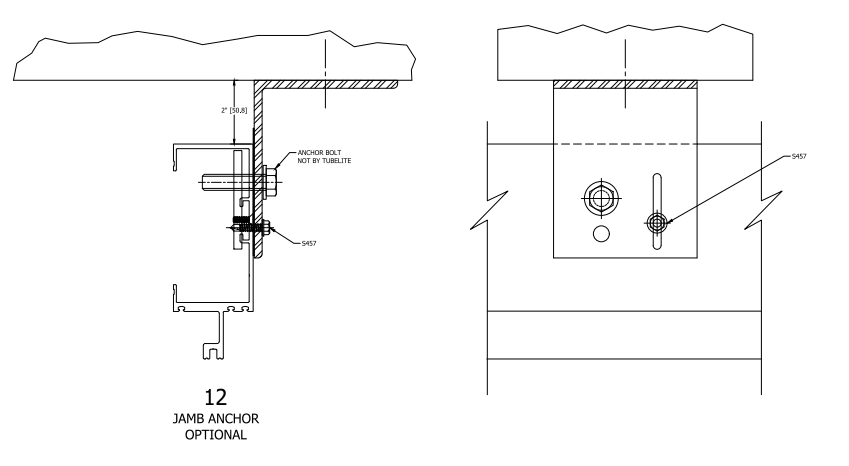
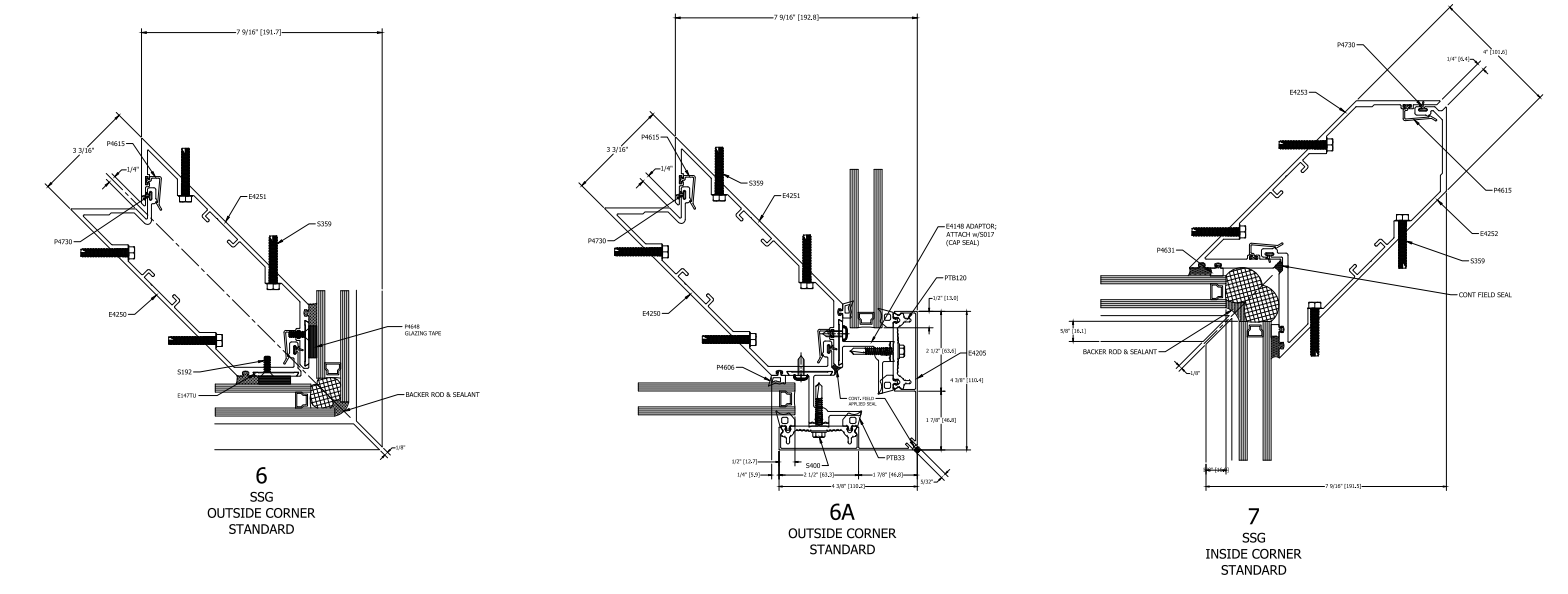
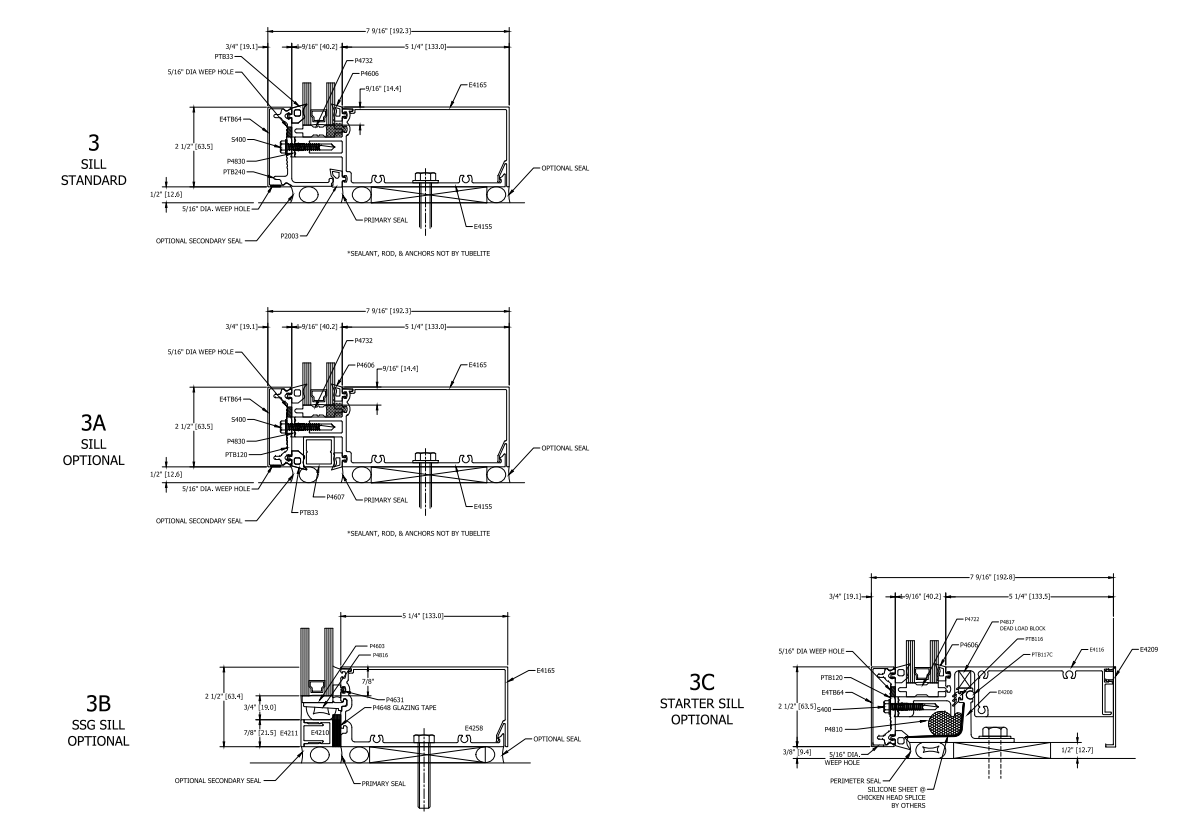


TYPICAL ELEVATION

400SS FIELD GLAZED CURTAIN WALL
 5-1/4" BACK MEMBER
 THERMAL PRESSURE PLATE

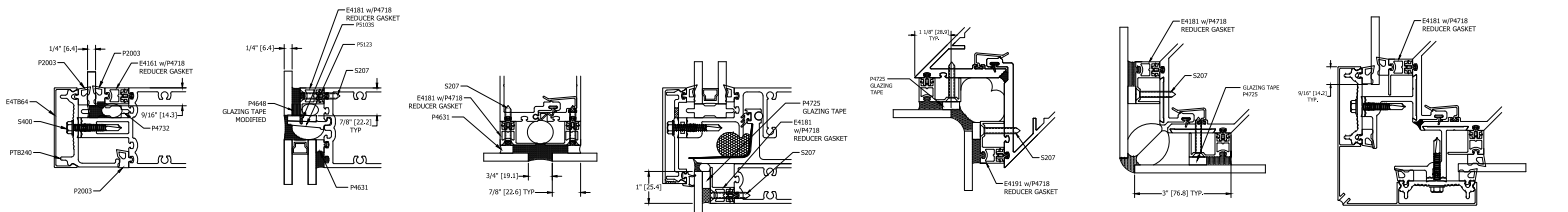


FACE COVER PINNING



OPTIONS FOR NON-TYPICAL INFILL

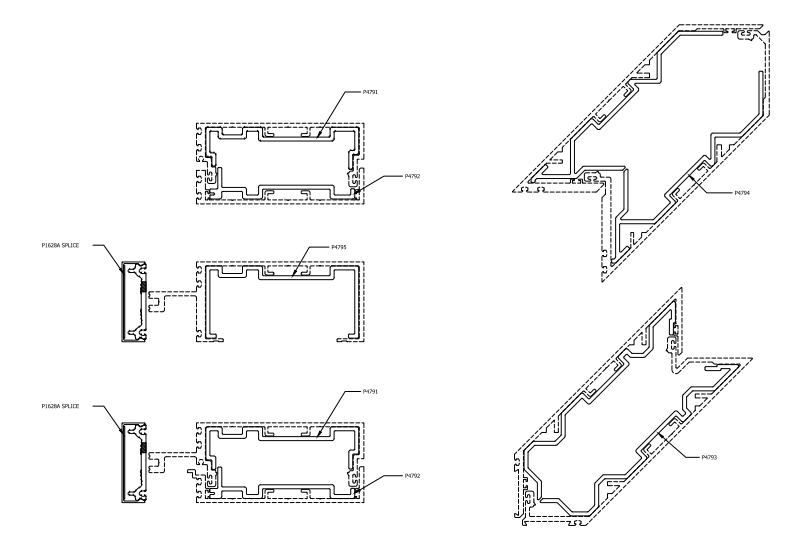
FOR VERTICAL SSG APPLICATIONS USING THESE GLAZING OPTIONS A SPECIAL VERTICAL SSG MULLION MAY BE REQUIRED TO PROVIDE 1/4" SILICONE JOINT THICKNESS. CONSULT TUBELITE ENGINEERING.



OPTIONS FOR 1/4" INFILL

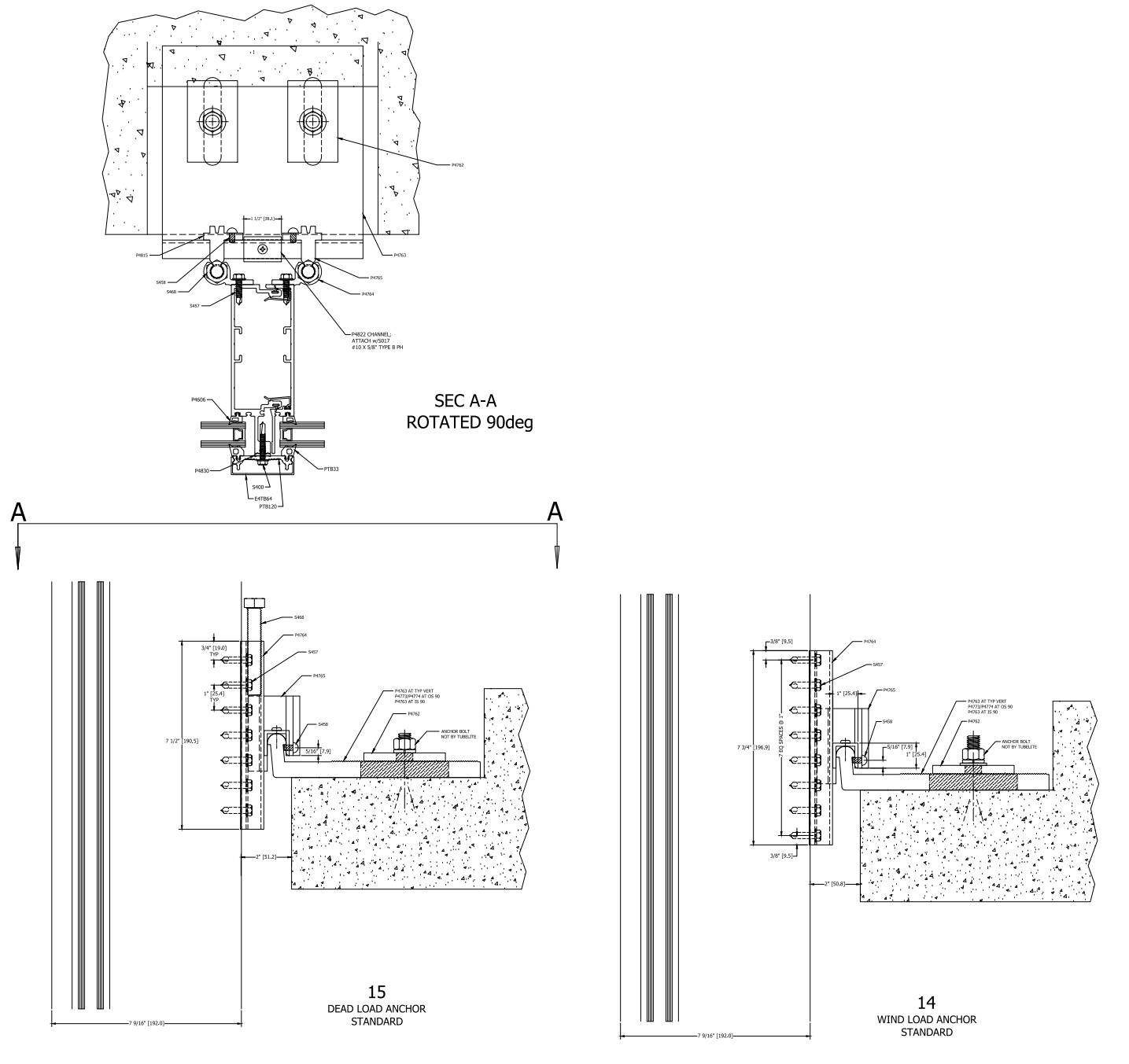
GLAZING INFILL OPTIONS

GLASS SHOWN DOES NOT NECESSARILY REPRESENT FINAL CONFIGURATION. CONSULT GLASS MANUFACTURER FOR SPECIFIC GLASS MAKE UP.
 USE OF SSG VERTICALS WITH THESE GLAZING OPTIONS REQUIRE 1/4" SILICONE JOINT THICKNESS FOR OPTIMUM STRUCTURAL SILICONE PERFORMANCE. CONSULT TUBELITE ENGINEERING FOR ANY CUSTOM CONFIGURATIONS REQUIRED.



16 CAPTURED MID-SPAN SPLICE STANDARD

17 SSG MID-SPAN SPLICE STANDARD



SEC A-A ROTATED 90deg

15 DEAD LOAD ANCHOR STANDARD

14 WIND LOAD ANCHOR STANDARD



Last Revised: 4/23/2024