

DEPENDABLE
 PRODUCT
 NEWS
TUBELITE[®]
 STOREFRONT, CURTAINWALL & ENTRANCES
 DEPENDABLE

Date: 06/13/2008

Engineering Bulletin: 060801

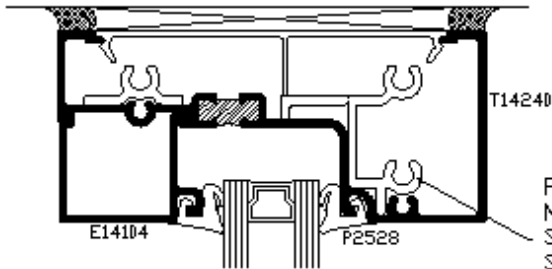
Effective Date: 06/13/2008

Released By: Nancy Kennedy

Subject: P4543A

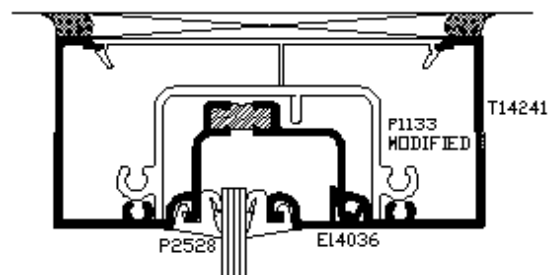
Description: Added an Off-Center Leg to P4543 to eliminate push-in when being installed into the 4500, E/T14000 and T14000 I/O Series Storefronts. P4543 is now obsolete when ordering order P4543A.

P1745 AT ANCHOR LOCATIONS
 P4543A MODIFIED BETWEEN ANCHOR LOCATIONS



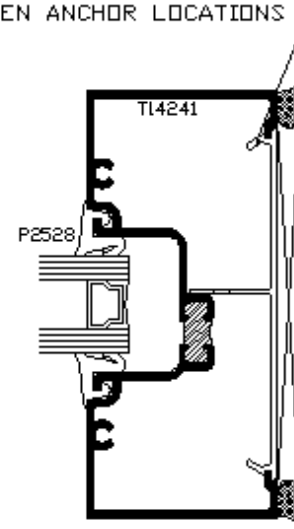
P1134
 MODIFIED
 S009 (3)
 S191 (2)
 REQUIRED AT CLIP
 JOINT ONLY

P1745 AT ANCHOR LOCATIONS
 P4543A MODIFIED BETWEEN ANCHOR LOCATIONS

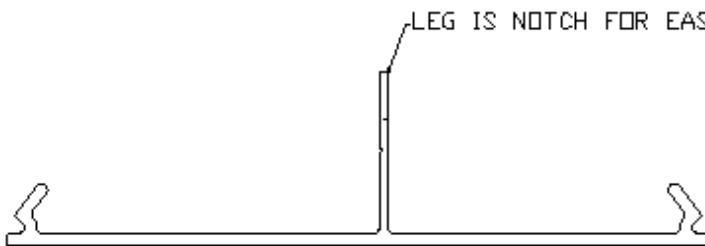


P1133
 MODIFIED

P1745 AT ANCHOR LOCATIONS
 P4543A BETWEEN ANCHOR LOCATIONS



LEG IS NOTCH FOR EASY MODIFICATION



NOT TO SCALE