

14000 I/O Series Storefront

Single cavity pour and debridge thermal barrier

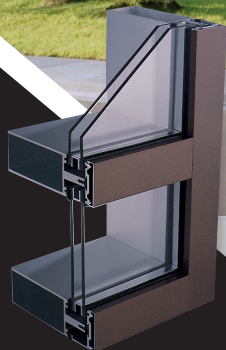
Glass or panels can be positioned to the inboard (I) or outboard (O) side of the 4-1/2" depth frame to achieve the look you imagine. Typical glass thickness is 1", and can be installed from the outside or inside of the building. Special glazing pocket reducers allow the use of 1/4" infill thicknesses, too.

14000 I/O Series Multiplane Storefront Framing single cavity pour and debridge thermal barrier insulates exterior surfaces from the interior to minimize temperature transfer. This provides industry accepted performance for condensation resistance and energy performance.

Using the same design, assembly, and accessories as the 14000 center glazed system allows combining inboard, outboard and center planes of glass in the same elevation with the same great performance.



**Standard Medium
Stile Entrances**



**200 Series
Curtainwall**

**ALSO
USED
WITH**

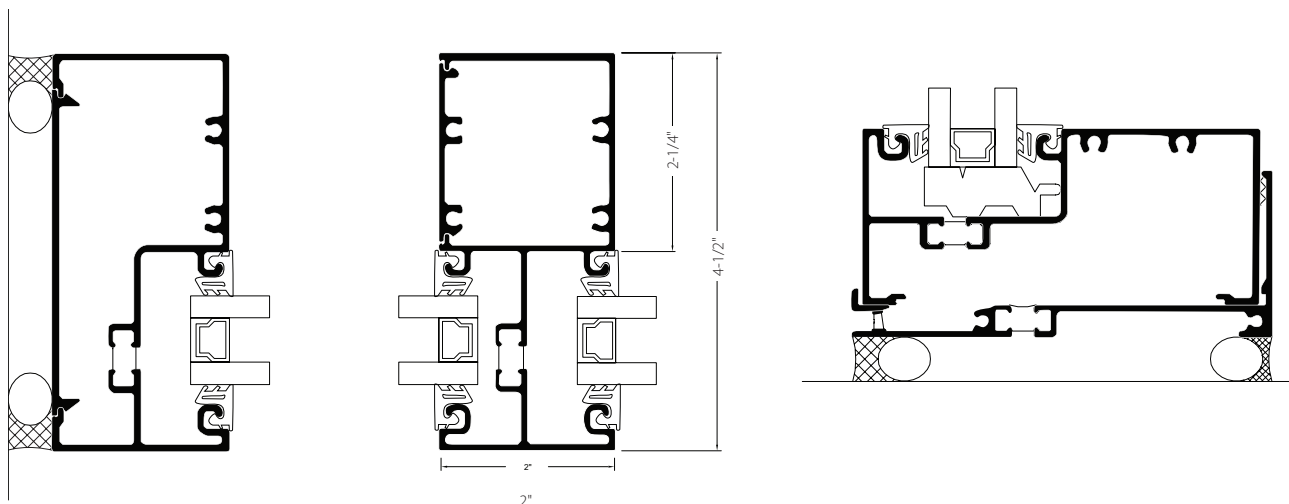
789 Eisenhower, Ann Arbor, MI

TUBELITE[®]
DEPENDABLE

LEADERS IN ECO-EFFICIENT STOREFRONT,
CURTAINWALL AND ENTRANCE SYSTEMS

14000 I/O Series Storefront

Single cavity pour and debridge thermal barrier



System Features:

- Standard 2" (50.8mm) sight-line on verticals and horizontals
- 4-1/2" (114.3mm) system depth
- Single cavity pour and debridge thermal barrier with Azon's Lancer® mechanical lock
- EPDM wedge type gaskets for 1" glass or panel thickness

Optional Features:

- Screw-spline or shear block connections
- Steel reinforcing if required
- Easily integrates with standard or thermal doors, operable vent windows & sun shades
- 7 anodized and 19 painted standard finishes
- Curved Headers
- Non-thermal Framing
- In-board, Centered, or Out-board glass plane
- Silicone Glazed Vertical



14000 I/O Series Product Specifications

Application: Low-rise commercial buildings: retail, office, healthcare, schools, etc

Description: 2" x 4-1/2" multiplane outside or inside flush glazed storefront

Face Width:	System Depth:	Glass:	Air Infiltration:	Water Infiltration:	Structural:	CRF:	U-Factor**:	Acoustic:
2"	4-1/2"	1" std (1/8" - 1-1/8")	0.06 CFM/Ft.2 @ 6.24 PSF	10 PSF - Inside Plane 12 PSF - Outside Plane	30 PSF - Design 45 PSF - Overload	52, 61 _G - Inside Plane 67, 69 _G - Outside Plane 64, 63 _G - Outside Plane SSG	0.33 - Inside Plane 0.35 - Outside Plane 0.32 - SSG Outside Plane	STC 32 OITC 26

** U-Factor per NFRC 100. Refer to the U-Value table at: www.tubeliteinc.com/products/storefront/14000-io-series-multiplane-storefront-framing/

DISCLAIMER: Tubelite takes no responsibility for product selection or application, including, but not limited to, compliance with building codes, safety codes, laws, merchantability or fitness for a particular purpose; and further disclaims all liability for the use, in whole or in part, of this Technical Guide in preparation of project specifications and/or other documents. Technical Guides are subject to change at any time, without notice, and at Tubelite's sole discretion. ©2017 Tubelite Inc.

051820

TUBELITE®

DEPENDABLE

LEADERS IN ECO-EFFICIENT STOREFRONT,
CURTAINWALL AND ENTRANCE SYSTEMS