

# Tubelite® 950SG Thermal Window Wall

Tubelite's 950SG Series offers solutions for between slab window wall applications. The 4- side SSG system has a 6" depth and can be installed entirely from the building interior. A vertical silicone diverter replaces the need for an exterior applied seal.

Optional integrated slab edge covers can be extruded or brake metal to finish off the building's exterior. The system design eliminates the need for an exterior seal at the sill starter. Head, sill and jamb starters enable complete installation from the inside of the building. The 3" sightline head starter also provides +/- 3/4" vertical interstory movement.

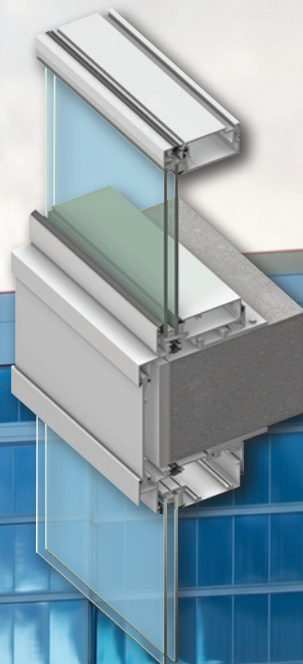
### Labor Savings with Thermal Performance

The dual strut ultra-thermal barrier provides industry leading performance where more stringent energy codes apply.

A single piece anti-buckling clip simplifies installation with fewer parts and steps.

The 950SG Series Thermal Window Wall is available with Tubelite's high recycled aluminum content, Ecoluminum, and environmentally friendly paint and anodized finishes from Linetec.

**ThermalBlock®**  
HIGH-PERFORMANCE THERMAL FRAMING



**TerraPorte 7600**  
Terrace Door

**900RW Thermal**  
Window Wall

ALSO  
USED  
WITH

Project: Kansas City Convention Center/Lowes Hotel, Kansas City, MO. Photographer: Eric BowersAno

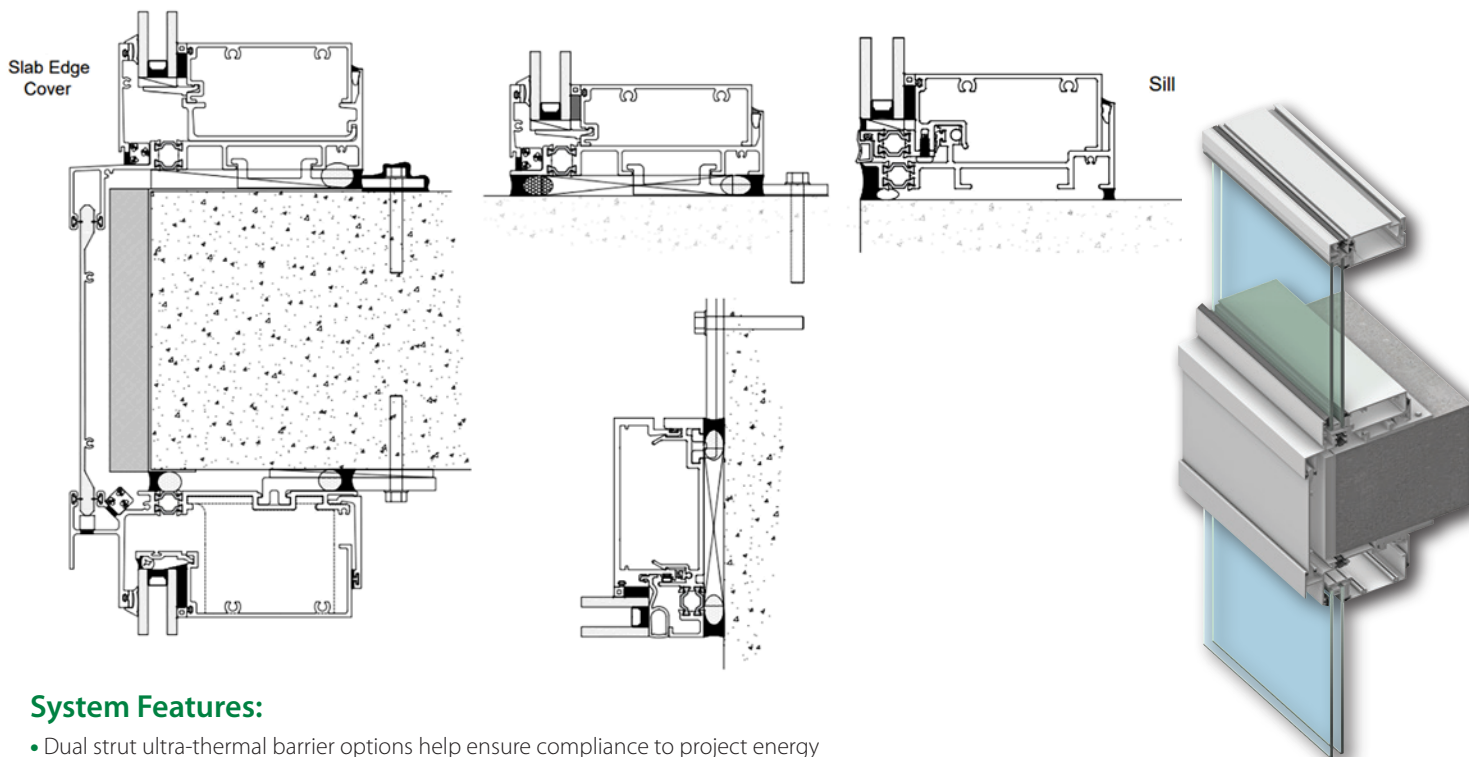
**TUBELITE®**  
**DEPENDABLE**

LEADERS IN ECO-EFFICIENT STOREFRONT,  
CURTAINWALL AND ENTRANCE SYSTEMS

# Tubelite® 950SG Thermal Window Wall

## Thermal-Block

HIGH-PERFORMANCE THERMAL FRAMING



### System Features:

- Dual strut ultra-thermal barrier options help ensure compliance to project energy requirements. See U-Factor and CRF performance data below.
- Three [3] sill options: 3-1/4" std, 2-1/4" low profile and SSG (no exposed metal).
- Dual finish option available.
- Two-piece vertical mullions allow continuous SSG glazed verticals.
- Can be used with MaxBlock sun shades.
- Head and sill starters, slab edge covers, pre-glazing frames.
- Inside and Outside corner extrusion profiles.
- The system is assembled and glazed prior to installation.

### Performance Test Standards

<b>Air Performance</b>	ASTM E 283
<b>Water</b>	AAMA 501.1, ASTM E 331 and ASTM E 547
<b>Structural</b>	ASTM E 330, ASTM E 501.4 and ASTM E 501.7
<b>Thermal</b>	AAMA 1503 and NFRC 102
<b>Acoustical</b>	AAMA 1801 and ASTM E 1425
<b>Thermal Cycling</b>	AAMA 501.5

### Tubelite® 950SG Window Wall Product Specifications

**Application:** Office, mixed use, healthcare, education, between slab system, interior and exterior glazing.

**Description:** 2-1/4" x 4-1/2" or 6" exterior set, screw spline construction, dual thermal strut, field or shop glazed window wall.

Face Width:	Overall Depths:	Glass Thickness:	Air Infiltration:	Static & Dynamic Water:	Structural (L/175)	U -Factor**: By Sill	CRF: (Frame)	Sound Movement:	Interstory Liveload:	Product Approval: (non-impact)
2-1/4" 3" w/starter	6"	1" & 1-1/16"	0.06 CFM/FT.2 @ 6.24 PSF	15 PSF	40 PSF – Design -60 PSF – Overload	Std – 0.34 Low – 0.35 SSG – 0.33 NFRC 100	Std – 81 Low – 81 SSG – 82	1" IGU 31 STC 28 OITC 1 1/16" IGU 36 STC 31 OITC	+/- 3/4"	Coming Soon

\*\* U-Factor per NFRC 100. Refer to the U-Value table at: [www.tubeliteinc.com/products/window-wall/](http://www.tubeliteinc.com/products/window-wall/)

DISCLAIMER: Tubelite takes no responsibility for product selection or application, including, but not limited to, compliance with building codes, safety codes, laws, merchantability or fitness for a particular purpose; and further disclaims all liability for the use, in whole or in part, of this product brochure in preparation of project specifications and/or other documents. Product brochures are subject to change at any time, without notice, and at Tubelite's sole discretion. ©2017 Tubelite Inc.

102522